

# To those who use the private rental lodging service

## Precautions during lodging

Please cooperate to take measures to prevent the outbreak of a fire.

### 1 How to use a kitchen stove and a heater and precautions for handling

Do not use cooking appliances, pots and pans which have not been provided.

#### ! Caution

Fire frequently occurs. Appropriately use cooking appliances. If you don't know how to use them, call the contact number.



Confirm the handling method before you use it.



Stay close to the stove while cooking.



- Do not place a flammable item near a heater.
- If oil needs to be fed, call the contact number.

### 2 Observe the smoking rules.

#### ! Caution

Put out a cigarette in an astray with water inside. Do not smoke cigarettes in locations other than specified locations.

#### Example when smoking is allowable

Throw away cigarette butts into a specified astray. (Do not throw away cigarette butts into a trash box to prevent a fire.)



No smoking in the hallway and on the balcony



No smoking in the bed

#### Example when smoking is not allowed



### 3 How to use a fire extinguisher

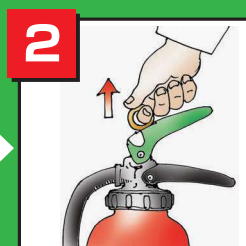
#### ! Caution

Make sure you know how to use the fire extinguisher to immediately extinguish a fire when it breaks out. If flames reach the ceiling, stop trying to extinguish the fire, and immediately escape.

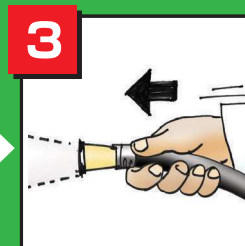
#### How to use the fire extinguisher



When you carry it, hold the lower lever.



Pull the yellow pin upward and remove it.



Point the nozzle toward the fire.



Grab the levers to discharge the fire extinguishing agent from the nozzle.

## Escape route plan



Confirm the locations of fire extinguishers, escape routes, and an escape method so as to take appropriate actions in case of a fire.

### 1 Escape route plan

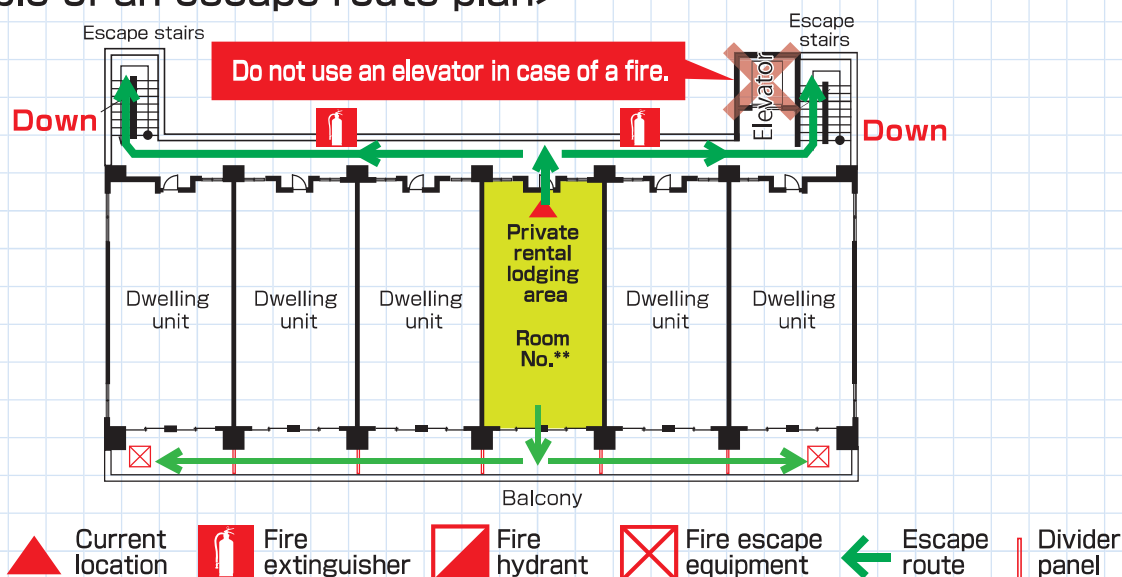
#### Caution

Prior to lodging, check the escape route plan and confirm the escape routes to be used in case of a fire.

After that, walk the routes to confirm the escape routes.

However, do not try kicking open the balcony divider panel except for the case of fire.

<Example of an escape route plan>



### 2 Escape method

#### The sensor detects a fire.

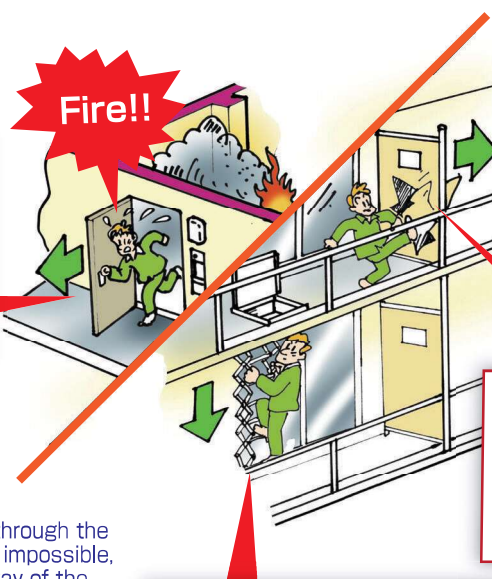
The sensor sounds an alarm or buzzer by detecting smoke or heat caused by a fire.

#### Escape through the front door

Escape through the front door, go through the hallway, and use the escape stairs to exit the building.

Escape if early fire extinction is impossible.

If escaping through the front door is impossible, escape by way of the balcony.



#### Balcony divider panel

Kick open the divider panel made of a thin board to escape to the dwelling unit next door.

#### Fire escape equipment (escape hatch + escape ladder)

Use the escape ladder to escape to the balcony of the dwelling unit on the floor below.

The alarm sound can be checked.  
<http://www.kaho.or.jp/alarmsound/>





# 119 call sheet



Immediately call 119 in case of emergency such as a fire.

Location (be sure to tell the location of calling)

Address

Building name, room number

Landmark

Answer what you were asked.

Fire or emergency?

Fire

- Where is the location of the fire?
- What is burning?
- What is your name and telephone number?



Emergency



Fire engines or an ambulance will be dispatched from a nearby fire station.



# To those who use the private rental lodging service

## Confirmation items at the check-in

Check the following items.  
Fill out the form on this sheet and leave it in the room.

☐

Did you understand how to use the kitchen stove, heater, etc. and precautions for handling those items?

☐

Did you understand the smoking rules?

☐

Did you confirm the location of the fire extinguisher and how to use it?

☐

Did you confirm the escape routes and the escape method?

☐

Did you check the 119 call sheet.

Signature

For inquiries and questions, call the following contact number.

### Contact information

Facility manager's address

Name

Telephone number

If you notice other matters concerning fire prevention, feel free to write about it.