

Kobe Waterfront Grand Design

Published in April 2025

Edited/Published by
City of KOBE



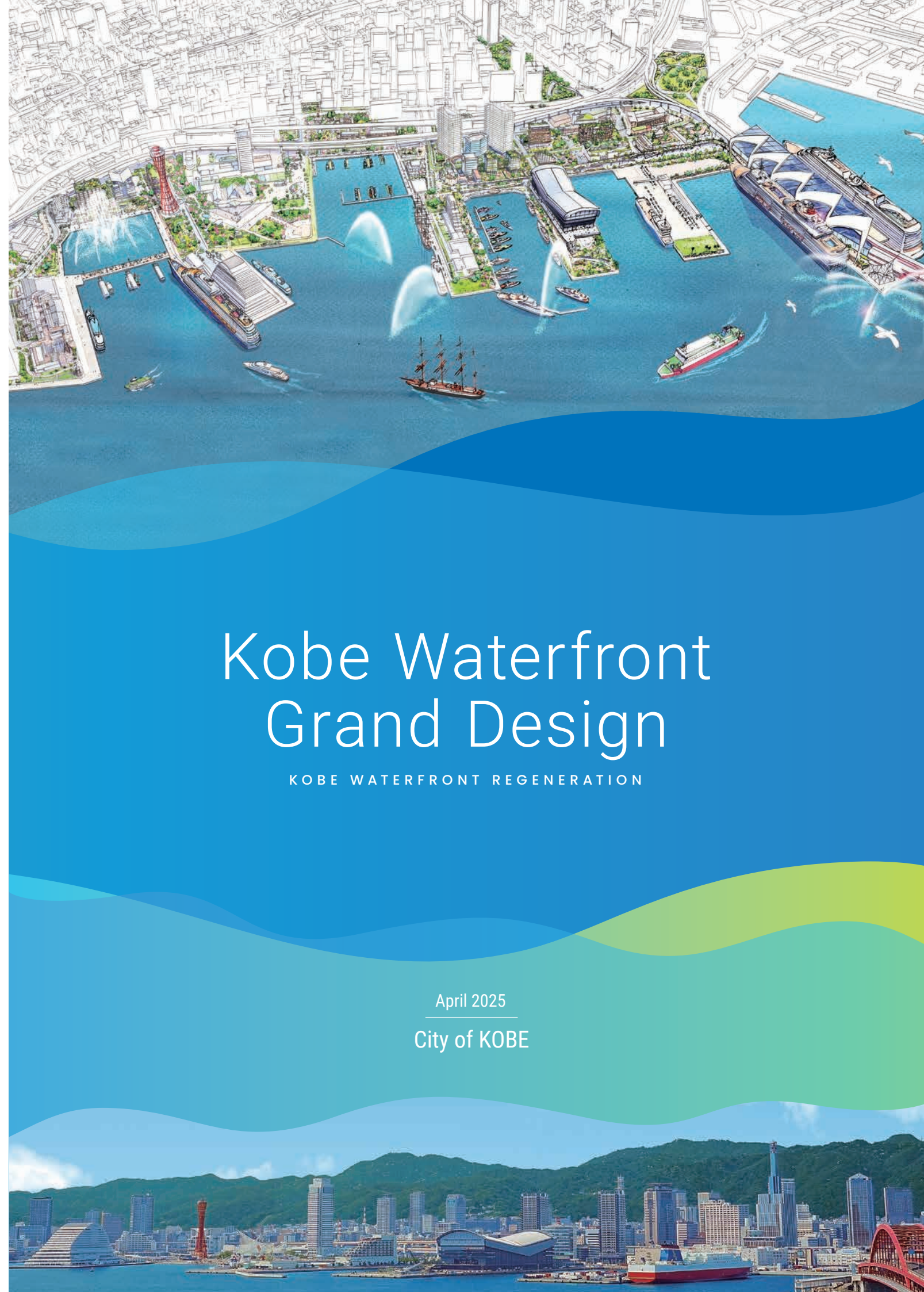
Discover the Latest Information on the Waterfront.

Kobe Waterfront Grand Design

KOBE WATERFRONT REGENERATION

April 2025

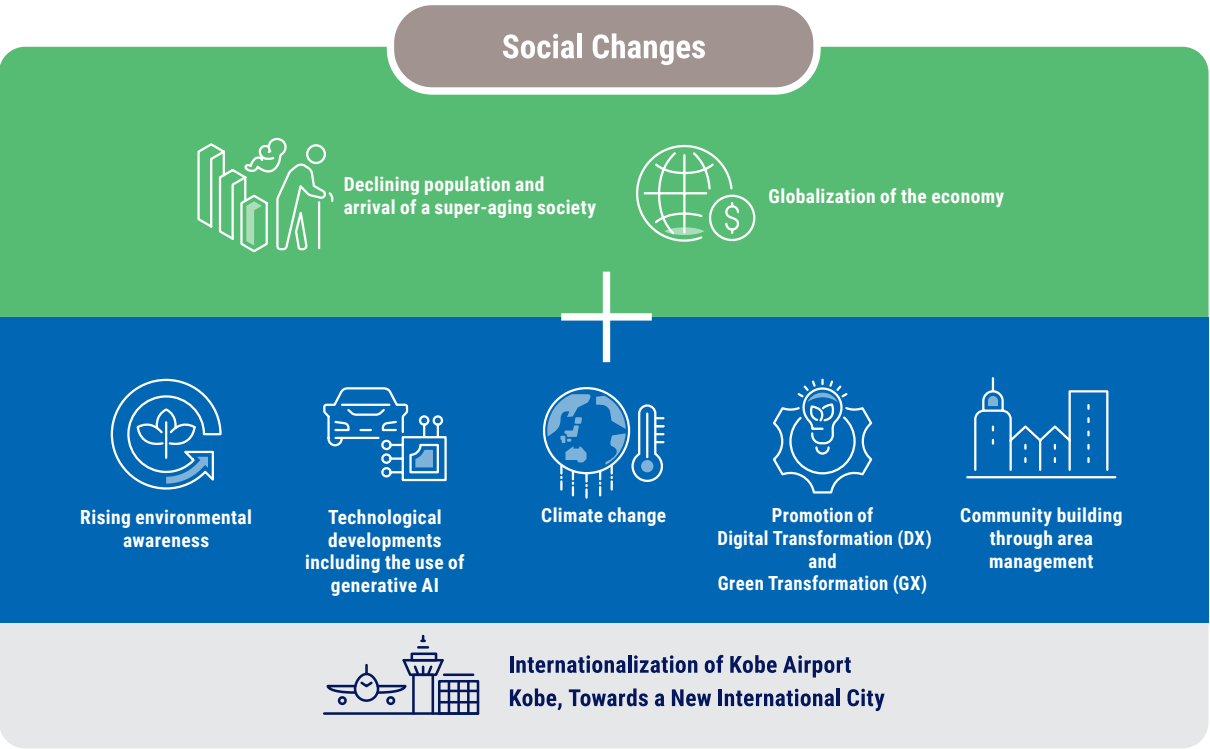
City of KOBE



Kobe Waterfront Grand Design

The Kobe Waterfront Grand Design outlines the strategic direction for initiatives planned along the waterfront over the next 10 to 15 years (up to around 2040), amid significant social changes such as the internationalization of Kobe Airport and the redevelopment progress of central Sannomiya.

This Grand Design serves as a guiding framework, setting the overall vision. Specific projects and actions will be developed progressively, taking into account evolving socio-economic conditions and incorporating feedback from stakeholders and users. Furthermore, the plan will be reviewed and updated approximately every five years to reflect the progress of waterfront redevelopment and any shifts in social and economic circumstances.



Kobe is a beautiful port city nestled between the sea and the mountains. Since the opening of its port, the city has flourished through international exchange, giving rise to rich cultural and global connections in Japan.

With the rise of container shipping, core port functions gradually shifted offshore to areas like Port Island and Rokko Island. As a result, former port logistics zones—such as the Shinko Pier West District—are now being dramatically transformed through waterfront redevelopment.

Since 2012, Kobe has been steadily advancing the revitalization of its waterfront. This effort is now reaching a major milestone with the renovation of the iconic Kobe Port Tower and the opening of a new arena at the Shinko Pier No. 2, marking the beginning of an exciting new chapter.

As Kobe Airport embraces international operations, the city is evolving into a new kind of international hub. Looking out over the sea and sky that connect us to the world, Kobe’s waterfront is poised to become a vibrant gathering place where people come together and new value is created.



神戸市長 久元 喜造

Master Concept



Creating New Value by Embracing the Sea, Mountains, and Sky - Connecting the Port City's Rich History with its Future

A breezy seaside haven where the sea, mountains, and sky feel just a step away. A lively hub where people come together, connect, and create. Here, the port’s proud history meets bold new possibilities, welcoming and inspiring visitors from across Japan and around the world.



Concept by Area

Name	Naka Pier Area	Kyobashi	Shinko Pier West
Concept	A vibrant entertainment hub on the waterfront	A dynamic gateway where people and places come together, sparking connection and energy along the waterfront	A resort-style haven where fresh feelings come alive A place where unforgettable memories take flight
Function	Tourism/Commerce	Mobility Hub/Commerce	Arena, Green Spaces, Marina, Accommodations, Culture, Business, Residences, and Interaction Overwater

Waterfront Strategy

Mobility & Circulation

Strategy
1

Welcoming Streetscapes That Inspire You to Stroll and Explore

THEME

- Designing Joyful, Walkable Spaces Where Everyone Feels Welcome
- Introduction of New Transportation Systems Such as LRT
- Enriching Urban Living with Digital Innovation



Cities around the world are transforming from vehicle-centric into people-centric hubs, where relaxation and enjoyment take center stage. We're dedicated to crafting pedestrian-friendly spaces filled with lush greenery, inviting terraces, and vibrant public areas, making every stroll a delightful experience. To enhance accessibility and seamless movement from terminal stations and east-west across the waterfront, we're embracing next-generation mobility solutions like Light Rail Transit (LRT), Bus Rapid Transit (BRT), and cutting-edge transportation systems. These innovations will empower free-flowing movement, helping create a dynamic and well-connected waterfront that invites all to explore and enjoy.

Explanation of Terms

LRT (Light Rail Transit): A cutting-edge rail system featuring low-floor vehicles and upgraded tracks and stations, designed to elevate accessibility, punctuality, speed, and comfort. LRT stands out for its efficient design, delivering a smooth, reliable, and enjoyable travel experience that makes getting around effortless.

BRT (Bus Rapid Transit): A dynamic, high-performance bus system that combines articulated buses, Public Transport Priority Systems (PTPS), dedicated bus lanes, and bus-only roads to ensure fast, punctual, and high-capacity service. BRT systems are designed for efficiency, offering reliable and swift public transportation that meets the demands of a busy city.

Green and Open Spaces

Strategy
2

Scenic Sea Views, Immersed in Nature

THEME

- Vibrant Seascapes and Expansive Ocean Views
- Green Network (Green Connect)
- Tackling Climate Change

Nestled between the awe-inspiring Rokko mountain range and the serene Seto Inland Sea, Kobe offers a one-of-a-kind scenic vista. The stunning cityscape, with its harbor set against the majestic Rokko mountains, presents an unparalleled urban landscape. We are committed to preserving and enhancing these natural and historical treasures, transforming the waterfront into spaces where people can immerse themselves in the breathtaking beauty of the sea and nature. Expansive green open areas will offer relaxation, promote well-being, and serve as key contributors to climate change resilience. By weaving a network of lush green spaces across the entire waterfront—our Green Network (Green Connect) initiative—we are shaping a dynamic, vibrant city where water and nature seamlessly integrate into the fabric of daily life.



To bring this vibrant vision to life, we focus on four dynamic strategies: improving mobility and flow, expanding lush green and open spaces, transforming the night with captivating views and a thriving nighttime economy, and driving city growth through forward-thinking private investment.

Nightscape / Nighttime Economy

Strategy
3

Kobe's Iconic Night Views that Invite and Captivate

THEME

- Sophisticated Light Displays and Illuminations
- Expanding Nighttime Tourism Experiences



Lighting that gracefully illuminates the city is vital for both tourism and urban development. A city with stunning night views creates a unique atmosphere and turns its nighttime landscape into a prized tourism asset. Our vision is to offer visitors the chance to immerse themselves in the beauty of the nightscape while leisurely exploring the streets and discovering charming spots along the way. By enhancing iconic landmarks like the Kobe Port Tower and the Kobe Maritime Museum, we will offer even more awe-inspiring views. Furthermore, by introducing an array of exciting nighttime experiences such as fireworks and light-inspired digital art, we will craft enchanting nightscape that draw people in. This will stimulate the nighttime economy and encourage longer stays, making Kobe an irresistible destination.

Urban Development Driven by Private Investment

Strategy
4

Urban Development Through Collaboration Among Industry, Government, and Academia

THEME

- Leveraging Public Investment and Deregulation to Attract Private Investment
- Enhancing Vibrant Open Spaces and Scenic Walkways
- Creating Lively, Welcoming Spaces Through Area Management

To cultivate a vibrant and dynamic city, it is essential to attract high-quality private investment and foster urban growth through collaboration among industry, government, and academia. Kobe City is proactively working to attract private investment by presenting a clear and compelling vision for the waterfront's future. Through initiatives such as infrastructure development, regulatory reforms, and the introduction of innovative technologies, we aim to create exceptional urban spaces, including lively open areas and scenic walkways, all fueled by private-sector investment. Guided by Kobe Waterfront Development Inc., area management initiatives will infuse the city with greenery, natural elements, music, art, and sports, breathing life into vibrant new communities where people can effortlessly come together and connect.



An Entertainment Space that Embodies the Essence of the Port City

Naka Pier Area



This flagship district embodies the spirit of the port city of Kobe. As we enrich it with tourism and commercial offerings, the area will transform into lush, green spaces where people naturally come together. By engaging a wide range of stakeholders and harnessing the expansive, breezy charm of the sea and sky, we will host captivating events and foster a vibrant atmosphere that elevates the district's overall value.

Key Projects

- Designing Inviting, Walkable Spaces that Embrace Openness
- Redevelopment of the Naka Pier Central Building
- Redevelopment of the Kamomeria Surrounding Area

Commercial/Tourism Hub

Vibrant Energy Seamlessly Blending with the Port

Creating Lush, Walkable Green Spaces

Enhancing Connectivity
(By providing pedestrian spaces and waterfront decks)



1 A Vibrant Commercial and Tourism Hub Seamlessly Integrated with The Port

CONTENT | Overview of Features

The Naka Pier Central Building will undergo a transformation into a key commercial and tourism hub, perfectly integrated with the iconic Kobe Port Tower. Furthermore, we will enhance the connection between Meriken Park and Harborland, cultivating a lively atmosphere that beautifully complements the port. To bring this vision to life, we will revitalize and redevelop the area surrounding the Naka Pier Central Terminal (Kamomeria), creating an energetic and dynamic space.



2 Establishing Lush, Walkable Spaces While Enhancing Accessibility

CONTENT | Overview of Features

The roads and park spaces surrounding the Kobe Port Tower will be revitalized to enhance east-west connectivity, while ensuring easy access. This will create lush, walkable environments by the seaside. The park will feature charming kiosks, cafés, and restaurants, offering visitors a peaceful place to unwind and enjoy leisurely moments. Additionally, the area will host a variety of events, such as markets showcasing local agricultural products and artisanal goods, transforming it into a vibrant hub for community interaction and lively activities.

The Gateway to the Waterfront, Fusing Connectivity and Vibrancy

Kyobashi



This waterfront gateway serves as a direct link to the city center. Our goal is to establish a vibrant hub for transportation and information, where multiple modes of transport, including the LRT and other mobility options, seamlessly connect to a scenic waterfront promenade.

Key Projects

- Land Reclamation of The Marina
- Attracting Commercial Developments and Enriching Green Spaces
- Enhancing Connectivity and Pedestrian Movement in the Old Foreign Settlement Area



1 The Waterfront Gateway

CONTENT | Overview of Features

In parallel with the major renovation of the Hanshin Expressway Route 3 Kobe Line, we will improve connectivity by developing expansive green spaces, pedestrian walkways, and a walkable deck leading to the Old Foreign Settlement Area. As a central feature of this revitalization, we will introduce a dynamic commercial hub offering a blend of dining, retail, music, sports, and more. This will attract visitors, creating a vibrant atmosphere that radiates throughout the surrounding community.



2 Waterfront Promenade and Introduction of New Mobility Solutions

CONTENT | Overview of Features

By developing an open waterfront promenade, we will enhance the connection between Shinko Pier West and Naka Pier Area. Our vision is to create a central hub that seamlessly integrates new transportation systems, such as LRT, BRT, and shared mobility options, with the promenade, boosting connectivity and facilitating smooth movement throughout the area.

A Resort-Like Environment Where New Enthusiasm and Excitement Come to Life

Shinko Pier West



With a strong focus on attracting inbound tourists, we aim to create a space where visitors can enjoy one-of-a-kind activities and resort hotels, offering exclusive experiences that can't be found anywhere else. By integrating cutting-edge technology, we will build a dynamic city where diverse spaces seamlessly come together, fostering a vibrant and energetic community.

Key Projects

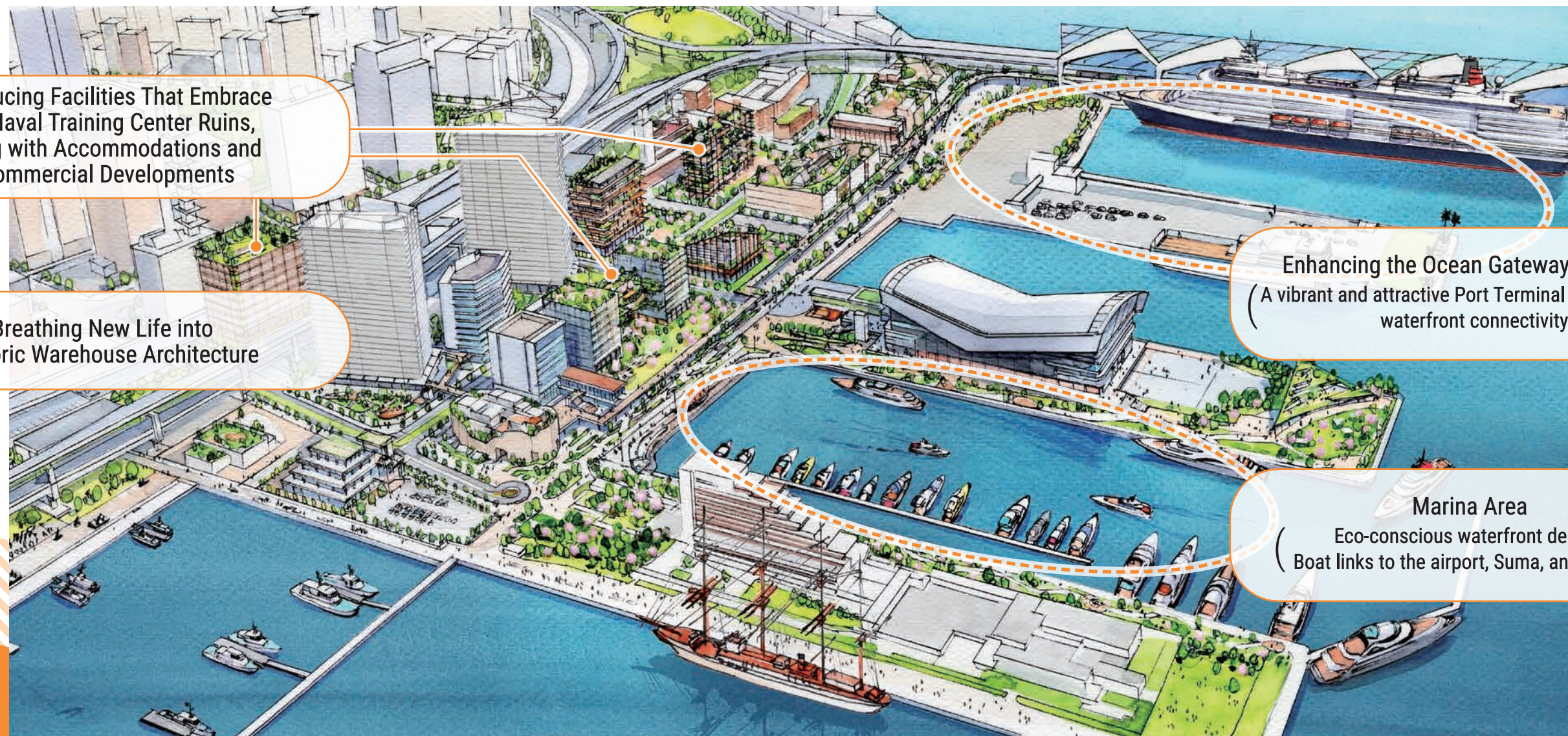
- Marina Development and Surrounding Area Enhancement
- Future Redevelopment: Inviting Accommodation and Commercial Facilities
- Upgrading the Ocean Gateway Function

Introducing Facilities That Embrace the Naval Training Center Ruins, Along with Accommodations and Commercial Developments

Breathing New Life into Historic Warehouse Architecture

Enhancing the Ocean Gateway Function
(A vibrant and attractive Port Terminal with enhanced waterfront connectivity)

Marina Area
(Eco-conscious waterfront design / Boat links to the airport, Suma, and Setouchi)



1 Transforming Historic Buildings, such as the Naval Training Center Ruins and Warehouses, into Vibrant Spaces with Accommodations and Commercial Facilities

CONTENT | Overview of Features

By integrating a variety of functions, including offices, commercial spaces, museums, hotels, and residential areas, the district will evolve into a lively and vibrant town. While preserving and showcasing the regional resources and historic cityscape that reflect the rich history of Kobe Port, such as the Naval Training Center ruins and other significant buildings, we aim to introduce new functions and spaces. This approach will foster a dynamic, "mixed-use" community that attracts and serves a diverse range of visitors and residents.



2 Revitalizing the Marina Area to Strengthen Its Role as a Key Ocean Gateway

CONTENT | Overview of Features

Shinko Piers 1 and 2 will transform into a resort-inspired space, surrounded by water and lush greenery, providing a tranquil environment where visitors can feel closely connected to the sea. At the same time, Shinko Piers 3 and 4 will introduce exciting new attractions and vibrant features to the Port Terminal, improving connectivity between the Terminal and Piers 1 and 2. This development will further strengthen the ocean gateway function, connecting the Terminal seamlessly with Kobe Airport and the beautiful Seto Inland Sea.

A Place to Enjoy Kobe's Nightlife and Admire the Stunning Night Views

Nighttime Scenery



Kobe's breathtaking nightscape is one of its most captivating features. By further enhancing this stunning scenery, we aim to establish Kobe as a premier nighttime destination, boosting the night-time economy and creating a place that people will not only want to visit but also stay. Throughout the entire waterfront, we are committed to embracing renewable energy solutions and striving to achieve the SDGs, ensuring that our city's growth is both sustainable and inspiring.

Key Projects

- Sophisticated Lighting and Illumination
- Elevating Nighttime Tourism



1 Elegant Lighting and Illuminations

CONTENT | Overview of Features

The nighttime views from the water or the opposite side of the piers are a defining feature of Kobe's waterfront, capturing the essence of the city's charm. Through this redevelopment project, both the public and private sectors are joining forces to further elevate this experience. We will extend elegant lighting throughout the entire waterfront, guiding visitors from the entrance to the water's edge, crafting an enchanting nightscape that beckons and captivates all who pass by.



2 Enhancing Nighttime Tourism Experiences

CONTENT | Overview of Features

Throughout the year, iconic landmarks such as the Kobe Port Tower and the Kobe Maritime Museum will come alive with synchronized light and sound shows, complemented by breathtaking fireworks over the sea. Seasonal light art events and dazzling illuminations will be introduced, offering a diverse range of exciting nighttime experiences at the waterfront. Embracing its one-of-a-kind waterside setting, we will craft spectacular displays of water and light that accentuate the area's natural beauty, creating a truly unforgettable atmosphere.

The Future Vision of the Waterfront

By Around 2040

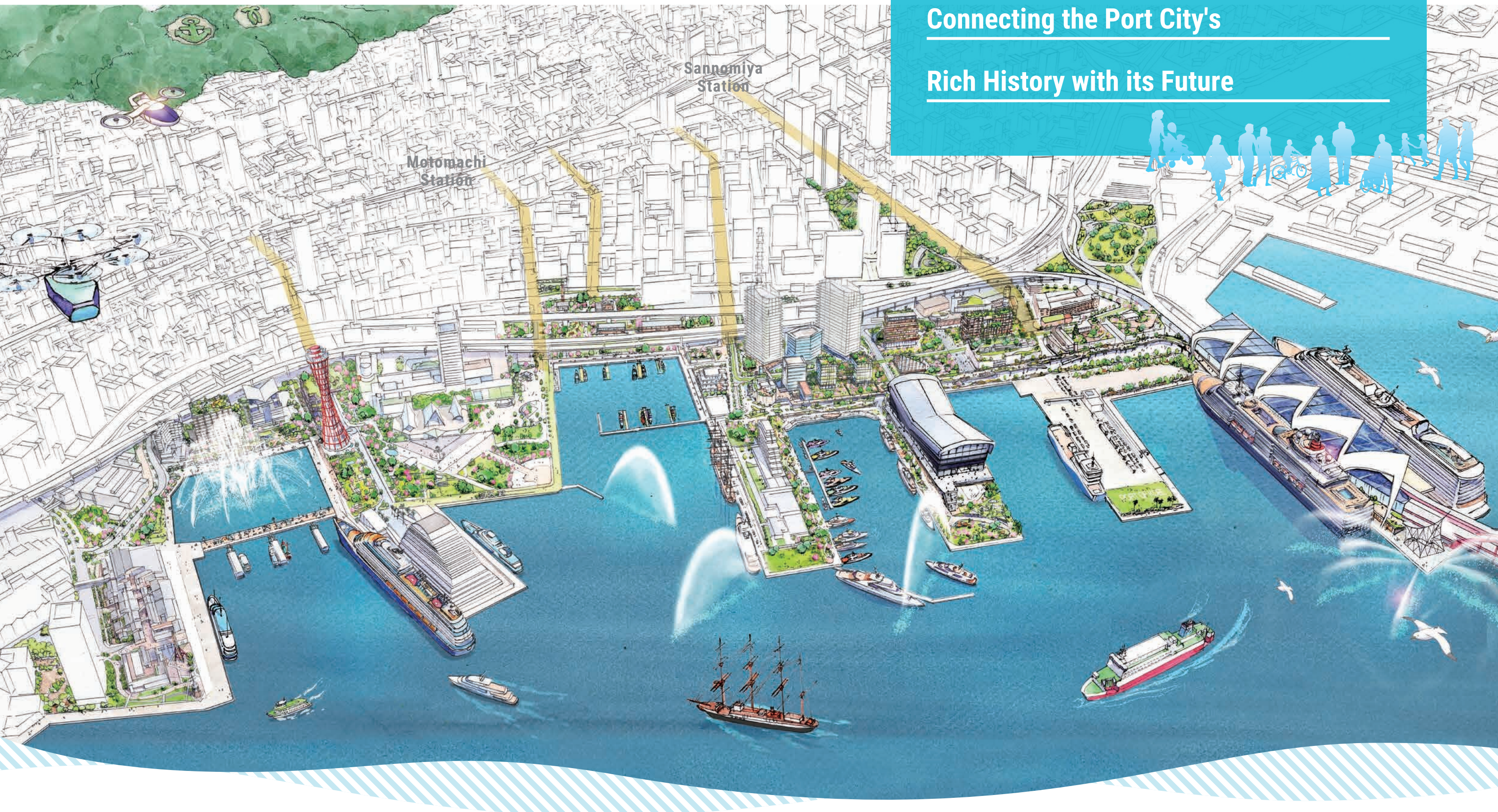
KOBE WATERFRONT REGENERATION

Creating New Value by

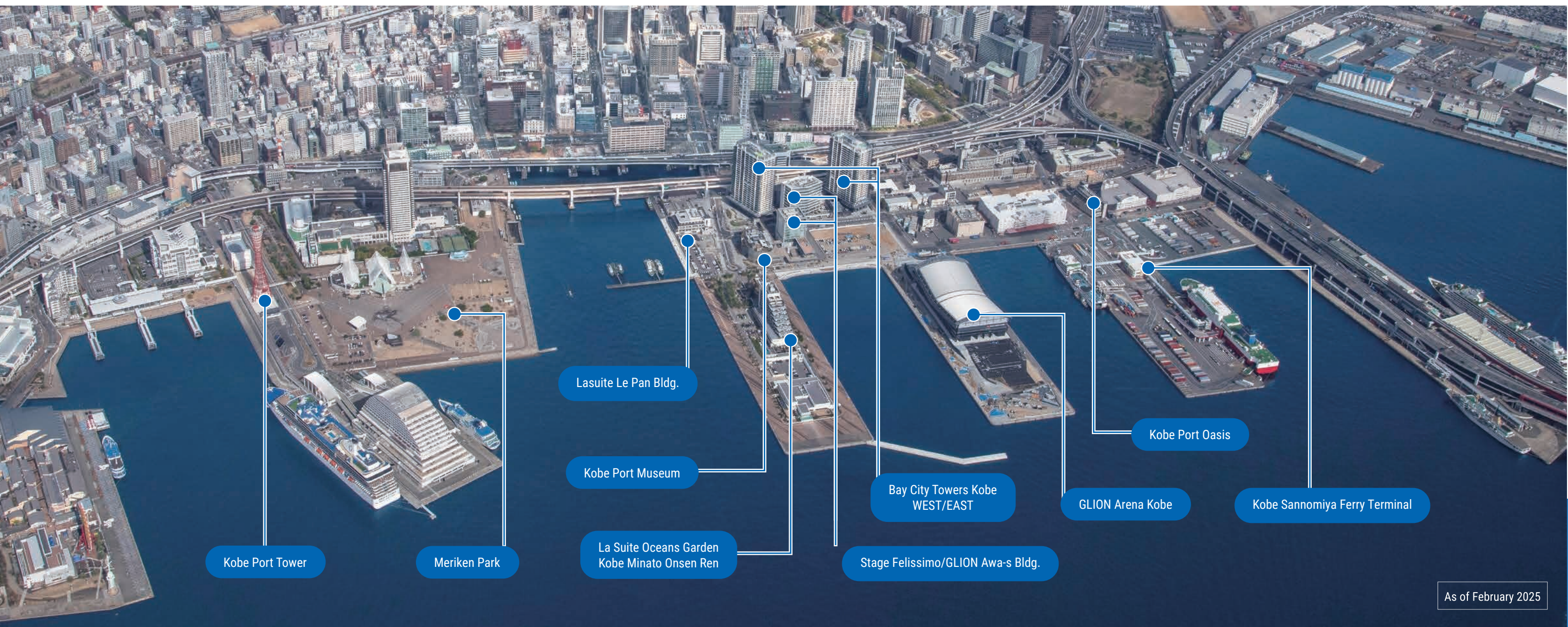
Embracing the Sea, Mountains, and Sky -

Connecting the Port City's

Rich History with its Future



Waterfront Futures: The Evolution of Urban Shorelines



2011

March
Establishment of the "Grand Design"
of Port City Kobe

2012



2014

September
Kobe Sannomiya Ferry Terminal
Opened

2015

December
La Suite Oceans Garden, Kobe Minato
Onsen Ren Opened

2017

(150th Anniversary of the Port of Kobe)
April
Renovation of Meriken Park
May
Redevelopment of Shinko Pier No.1 Base
July
Kobe Port Oasis Opened

2021

January
Stage Felissimo Opened
April
GLION Awa-s Bldg. Opened
May
Kobe Waterfront Development Inc.
Established
October
Kobe Port Museum Opened

2022

December
Establishment of the 'Kobe Waterfront
Vision'

2023

January
Completion of Bay City Towers Kobe
WEST

2024

April
Kobe Port Tower Reopened
After Major Renovation

2025

February
Completion of Bay City Towers Kobe EAST
March
Lasuite Le Pan Bldg. Opened
April
GLION Arena Kobe Opened



The Historical Development of Kobe Port

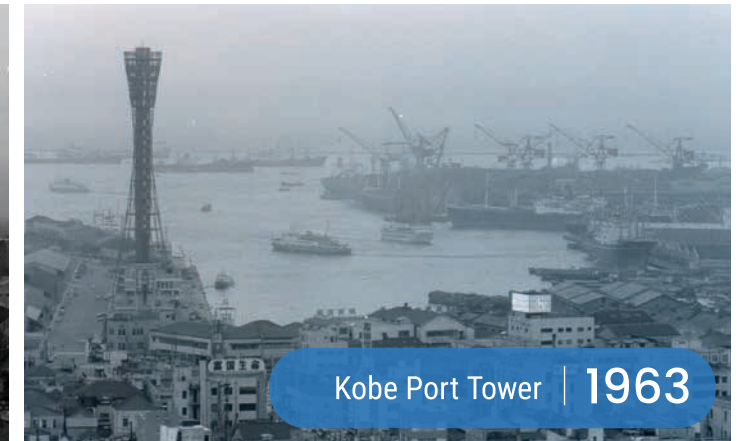
- 1864 : Founding of the Naval Training Center
- 1868 : Kobe Port Opened
Meriken Wharf Constructed



Kyobashi Area | 1879

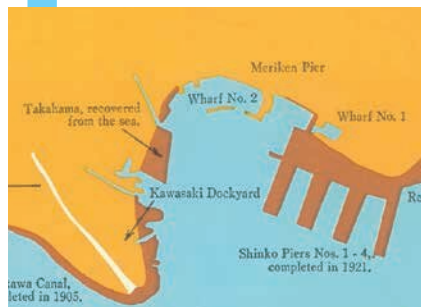


Shiko Pier West | 1956



Kobe Port Tower | 1963

- 1907 : Groundbreaking for Shiko Piers
No. 1-4
(Completed in 1922)
- 1923

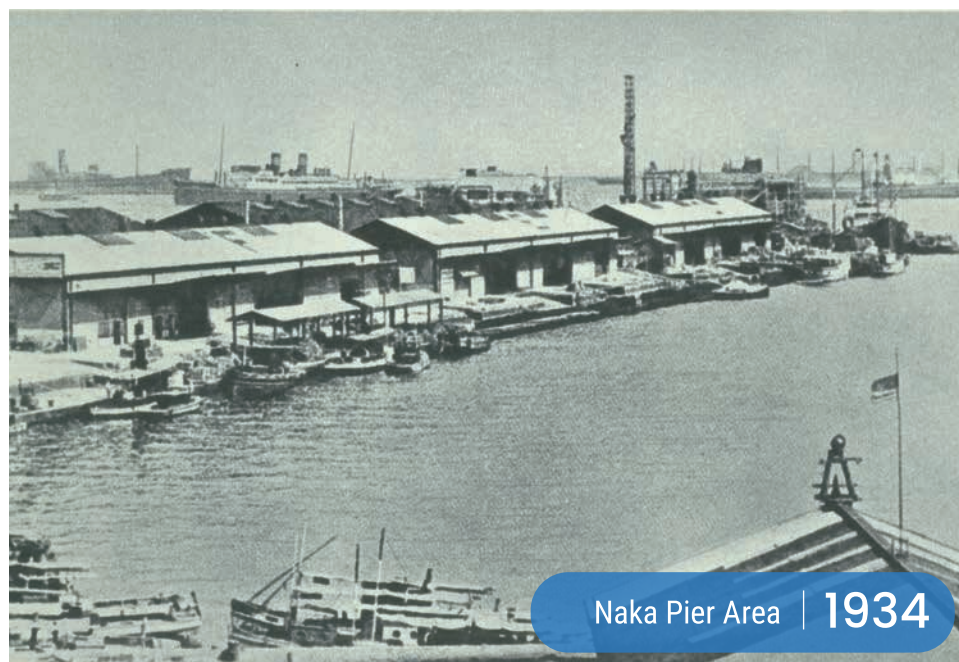


Meriken Wharf | 1923



Shiko Pier West | 1981

- 1929 : Groundbreaking for Naka Pier
(Completed in 1938)
- 1940



Naka Pier Area | 1934



Naka Pier Area | 1987

- 1963 : Kobe Port Tower Opened
- 1966 : Groundbreaking for Port Island Phase 1
(Completed in 1981)
- 1967 : Inaugural Arrival of Container Ship
- 1972 : Groundbreaking for Rokko Island
(Completed in 1992)
- 1981 : Portpia '81 Event Held
- 1984



- 1987 : Meriken Park Opened
- 1992 : Kobe Harborland Opened
- 1995 : Great Hanshin-Awaji Earthquake
- 1998 : 'Kamomeria,' Naka Pier Central
Terminal Opened
- 2006 : Kobe Airport Opened