

第16回 神戸市内景況・雇用動向調査  
＜調査結果報告書＞

平成25年3月

神戸市産業振興局

	1
	2
1	2
2	3
3	3
	4
	5
	7
1	7
2	9
3	11
3 - 1	13
3 - 2	15
4	17
4 - 1	19
4 - 2	21
5	23
6	25
7	27
8	29
9	30
9 - 1	32
10	34
11	36
12	38
	40
1	40
2	44
( 2 - 1 )	44
( 2 - 2 )	46
( 2 - 3 )	48
	50
( 1 )	50
( 2 )	53

■調査概要

2 5 1 2 5                      2 5 2 2 7  
 2 5 1 1  
     2 4 7 9  
     2 4 1 0 1 2  
     2 5 1 3  
     2 5 4 6

5 0 0                      5 0 0                      1 0 0 0  
 5 4 1                      5 4 . 1

--

( 1 )

3

1 0

1 0

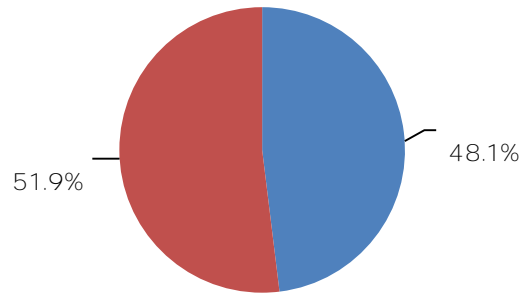
7


■回答事業所のプロフィール

( 1 )

481                      519                      105                      100                      85                      89

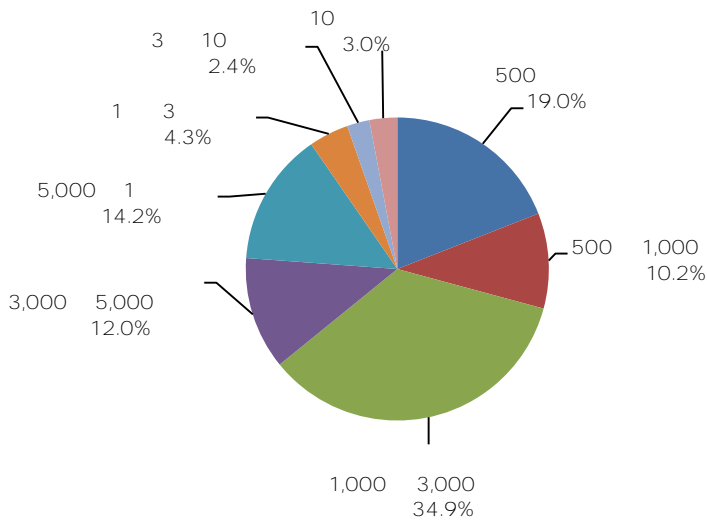
7.2



		%			%
	21	3.9		78	14.4
	57	10.5			
	22	4.1		60	11.1
	22	4.1			
	16	3.0			
	48	8.9		122	22.6
	5	0.9			
	18	3.3			
	12	2.2			
	39	7.2			
				260	48.1
	39	7.2		39	7.2
	17	3.1		17	3.1
	39	7.2		85	15.7
	46	8.5			
	2	0.4		140	25.9
	3	0.6			
	16	3.0			
	12	2.2			
	16	3.0			
	14	2.6			
	4	0.7			
	17	3.1			
	0	0.0			
	54	10.0			
	2	0.4			
				281	51.9
				541	100.0

( 2 )

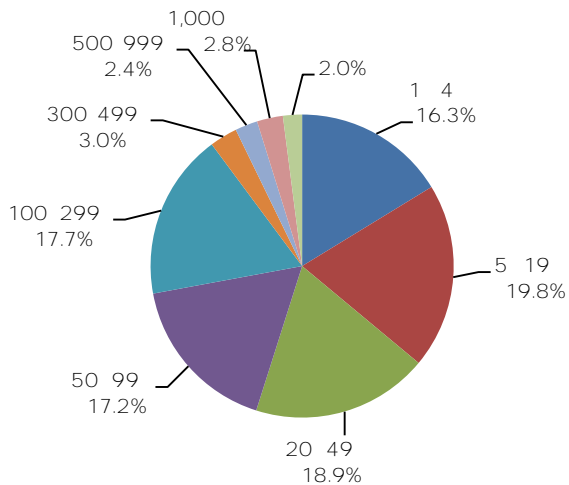
1,000 3,000 349 9 1 10 67  
 10 30



			%
	5 0 0	103	19.0
	5 0 0 1 , 0 0 0	55	10.2
	1 , 0 0 0 3 , 0 0 0	189	34.9
	3 , 0 0 0 5 , 0 0 0	65	12.0
	5 , 0 0 0 1	77	14.2
	1 3	23	4.3
	3 1 0	13	2.4
	1 0	16	3.0
		0	0.0
		541	100.0

( 3 )

" 100 " 7 721 100 299 2 17.7 " 300 " 1 81



		%
	1 4	88 16.3
	5 1 9	107 19.8
	2 0 4 9	102 18.9
	5 0 9 9	93 17.2
	1 0 0 2 9 9	96 17.7
	3 0 0 4 9 9	16 3.0
	5 0 0 9 9 9	13 2.4
	1 , 0 0 0	15 2.8
		11 2.0
		541 100.0

■調査項目ごとの全体概況

調査項目	前年度比	見通し	概況
	↗	↗	7 9 4 6 10 12
	→	↗	23 7 9 4 6
	↘	↗	4 6 96 222 35.4 61.5 74.3
	→	↗	4 6 ( 93 ) 232 (37.9 ) 1 3 77. 64.7 (22.0 )
	→	→	7 9
	↘	↗	7 9 10
	→	→	22 7 9
( )	↗	→	10 12
	→	↘	10 12 7 9 15.7 10 27.0 56.2 (146 ) 37.7 25.3
	→	→	23 7 9 4 6 1 3
	→	→	24 1 3
	→	→	
	↘	↘	25.3 42.9 23.8
	↘	↘	11.6 41.3 36.5 52.4

■業種別の全体概況

	20	7 9	10 12	4
			4 6	20
	68.7		8	78.9
		7 9	10	10 12
			77.9	(50.0)
		7 9		
			1 3	4 6
			49.6	22.5
	18.5			
		7 9	10 12	10 12
		7 9	10 12	
		7 9	10 12	4 6
		7 9	20	
			10 12	
		10 12	10	
		7 9	10 12	1 3
		7 9	10 12	1 3
		7 9	10 12	30.0
	2		48.3	
			10 12	
			4 6	
			54.2	
		7 9	10 12	
		2		
		7 9	10 12	1 3
			46.7	28.7
	23.8			

	<p style="text-align: right;">1 3</p> <p style="text-align: right;">1 3</p> <p>4</p> <p style="text-align: right;">1 0 1 2</p> <p style="text-align: center;">7 9</p> <p style="text-align: center;">7 9</p> <p style="text-align: right;">1 0 1 2</p> <p style="text-align: center;">36.7</p> <p>29.5</p> <p style="text-align: right;">22.1</p> <p style="text-align: right;">30.2</p> <p style="text-align: right;">18.1</p>
	<p style="text-align: center;">10 12</p> <p style="text-align: center;">30</p> <p style="text-align: right;">4 6</p> <p>3</p> <p style="text-align: center;">10 12</p> <p style="text-align: right;">1</p> <p style="text-align: center;">10 12</p> <p style="text-align: right;">± 0</p> <p style="text-align: center;">80.0</p> <p style="text-align: center;">10 12</p> <p style="text-align: center;">7 9 30</p> <p style="text-align: right;">10 12</p> <p style="text-align: right;">10 12</p> <p style="text-align: center;">4 6</p> <p style="text-align: center;">12.8</p> <p style="text-align: center;">7 9 20</p> <p style="text-align: right;">10 12</p> <p style="text-align: center;">24 4 6</p> <p style="text-align: right;">7 9</p> <p style="text-align: center;">7 9 30</p> <p>10 12</p> <p style="text-align: right;">41.0</p> <p style="text-align: right;">38.5</p>
	<p style="text-align: center;">1 3</p> <p style="text-align: center;">10 12</p> <p style="text-align: center;">40</p> <p style="text-align: center;">7 9 20</p> <p style="text-align: right;">1 3</p> <p style="text-align: center;">50.0</p> <p style="text-align: center;">1 3</p> <p style="text-align: center;">10 12</p> <p style="text-align: right;">1 3</p> <p style="text-align: center;">4 6</p> <p style="text-align: center;">23 10 12</p> <p style="text-align: right;">10 12</p> <p>52.9</p> <p style="text-align: center;">7 9</p> <p style="text-align: center;">10 12</p> <p style="text-align: center;">7 9</p> <p style="text-align: right;">10 12</p> <p style="text-align: center;">35.3</p> <p>29.4</p> <p style="text-align: center;">23.5</p>
	<p style="text-align: center;">10 12</p> <p style="text-align: center;">15</p> <p style="text-align: right;">1 3</p> <p style="text-align: center;">7 9</p> <p style="text-align: center;">1 3</p> <p style="text-align: center;">10 12</p> <p style="text-align: right;">24.7</p> <p style="text-align: center;">47.6</p> <p style="text-align: center;">7 9</p> <p style="text-align: center;">1 3</p> <p style="text-align: center;">7 9</p>
	<p style="text-align: right;">1 3</p> <p style="text-align: center;">1 3</p> <p style="text-align: center;">38.6</p> <p style="text-align: right;">23.6</p>



# ■景況・雇用動向について

( 1 )

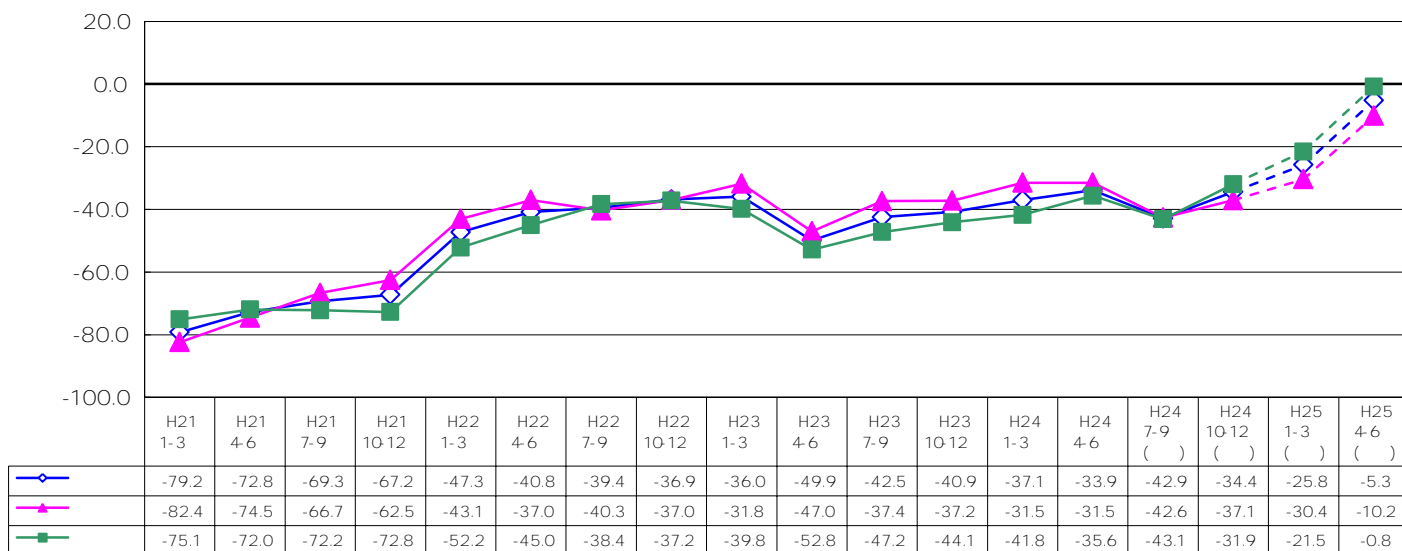
7 9

10 12

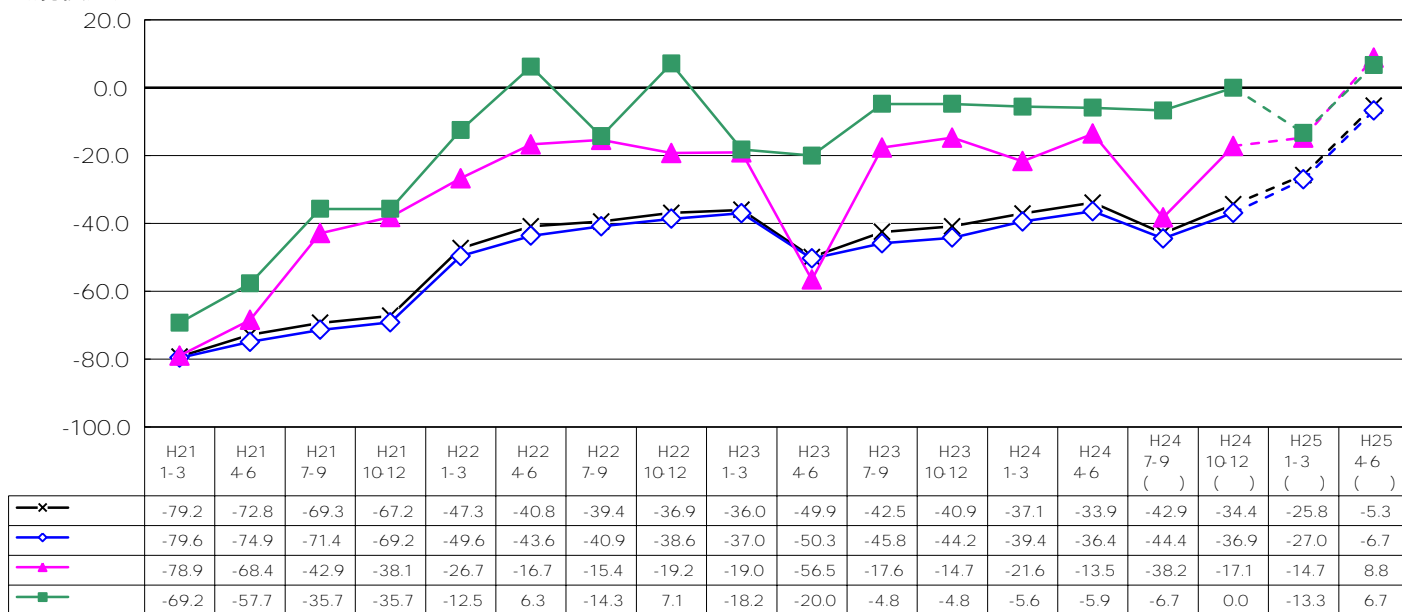
4 6

4 6

## (製造・非製造業別)



## (規模別)



( % )

3

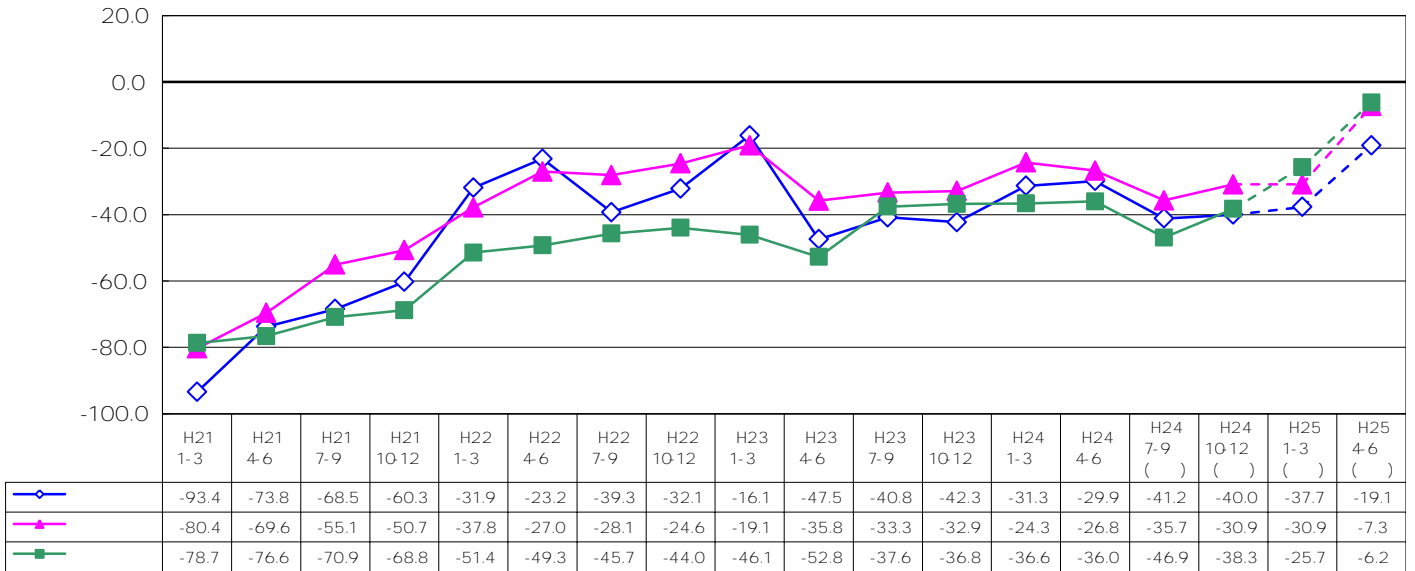
10 12

30

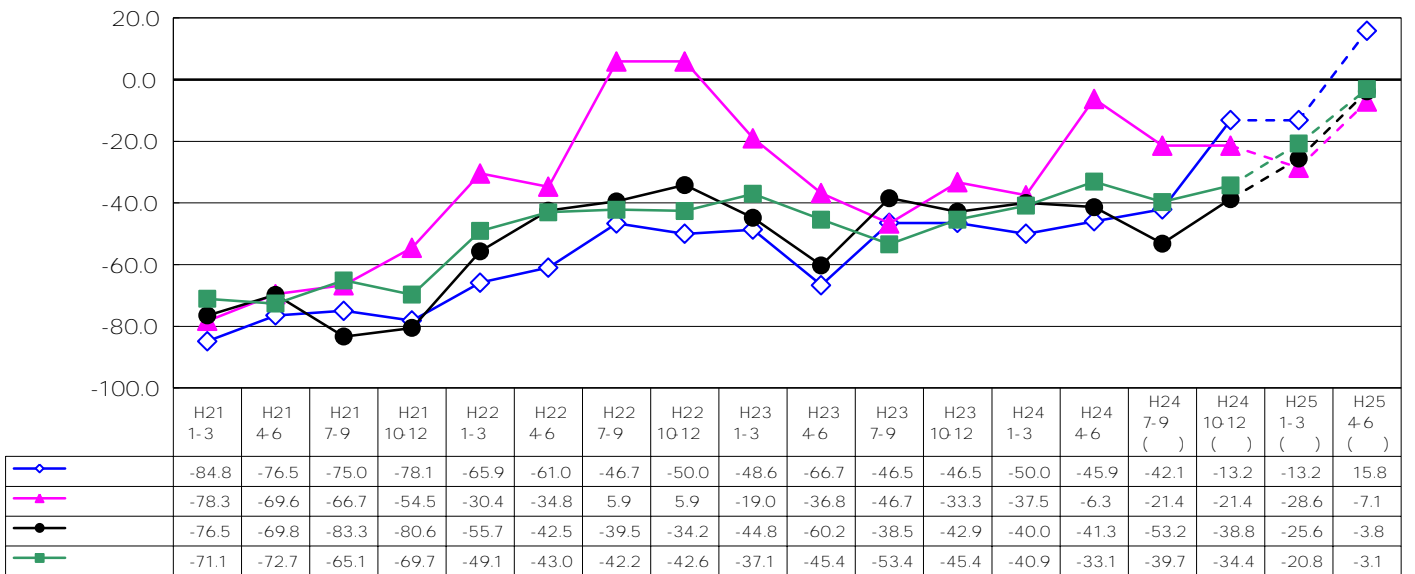
4 6

1 3

(業種別)  
[製造業]



[非製造業]



( % )

( 2 )

23 7 9  
7 9

10 12

4 6  
4 6

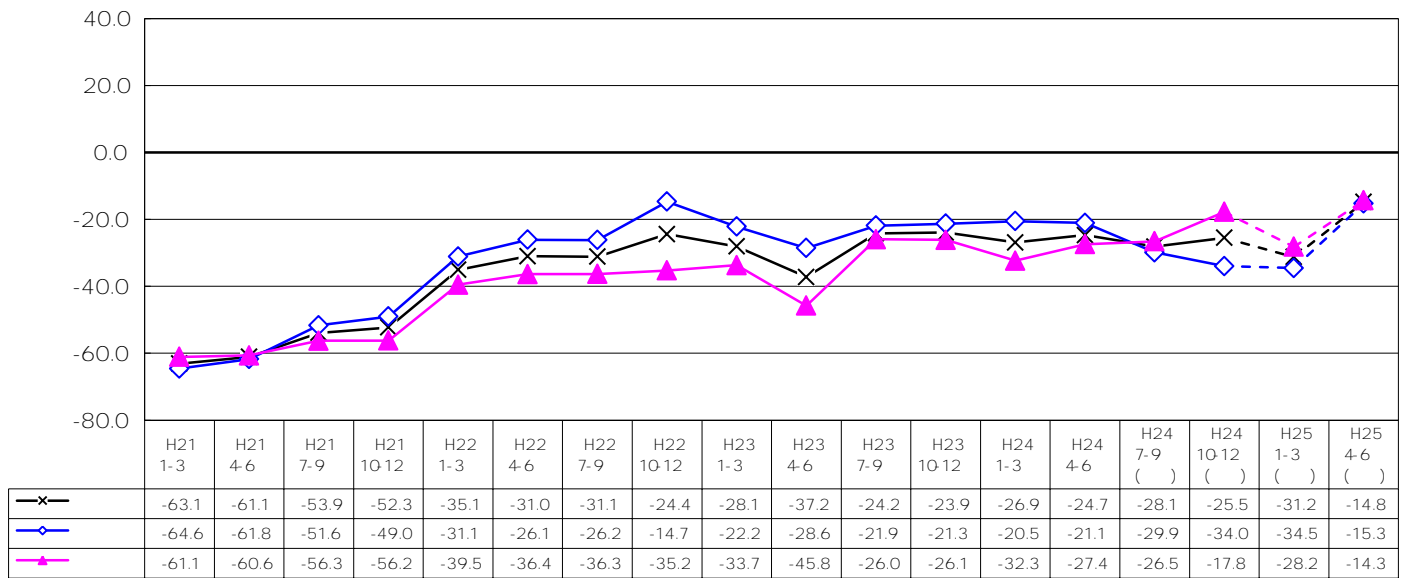
20

1 3

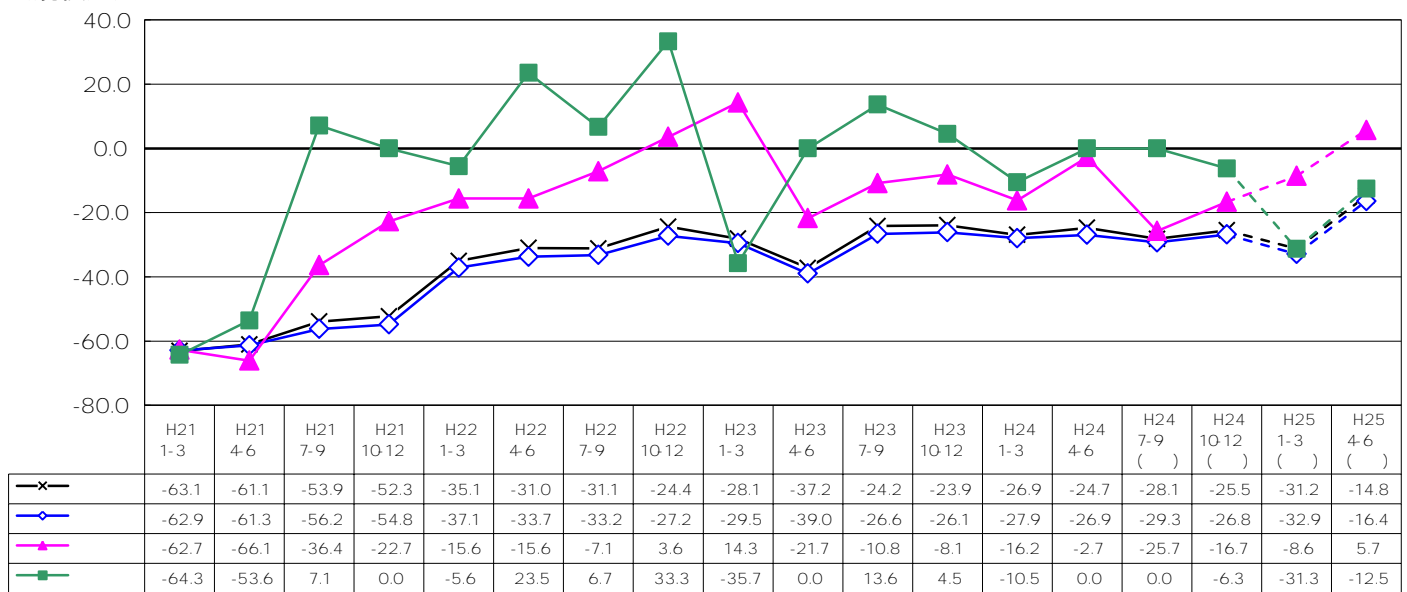
10 12  
10 12

1 3 25

(製造・非製造業別)



(規模別)



( % )

7 9

10 12

10 12

7 9

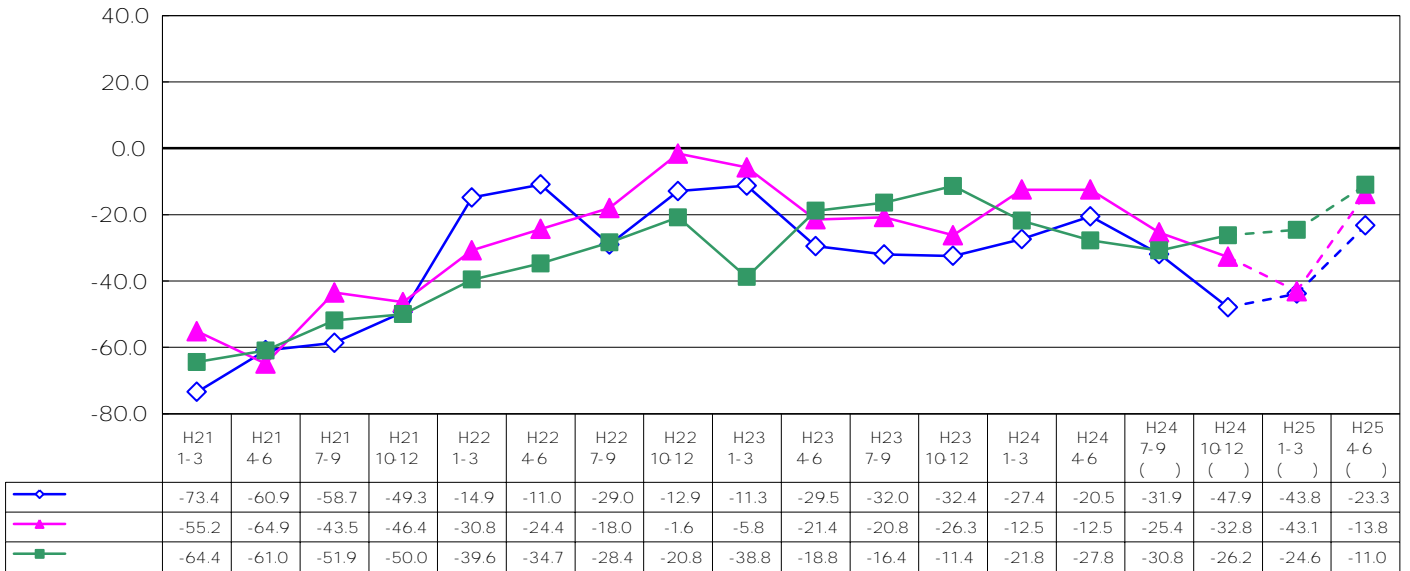
1 3

10 12

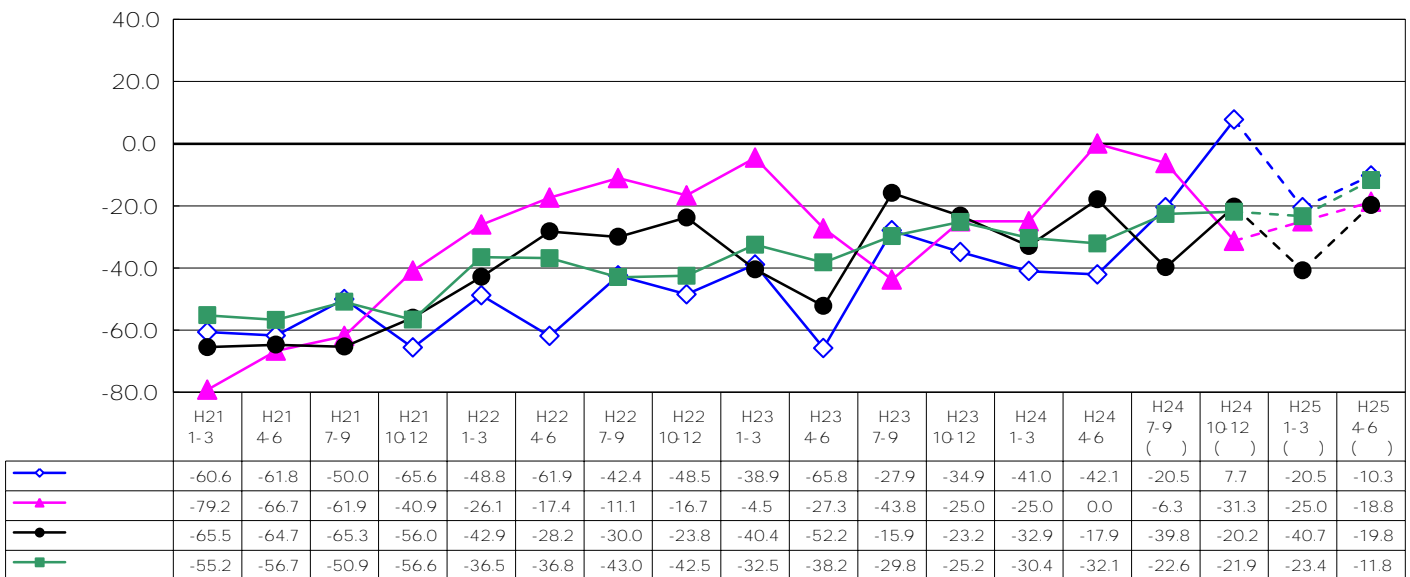
10 12

1 3

(業種別)  
[製造業]



[非製造業]



( % )

( 3 )

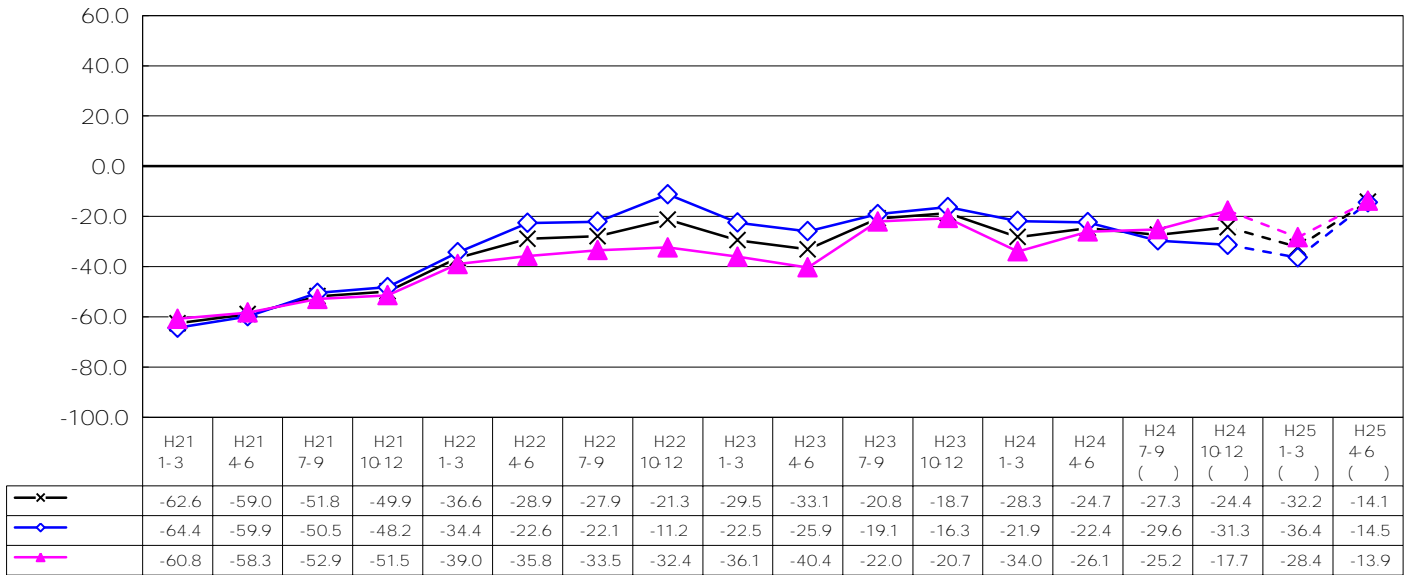
4 6  
4 6 20  
1 3

4

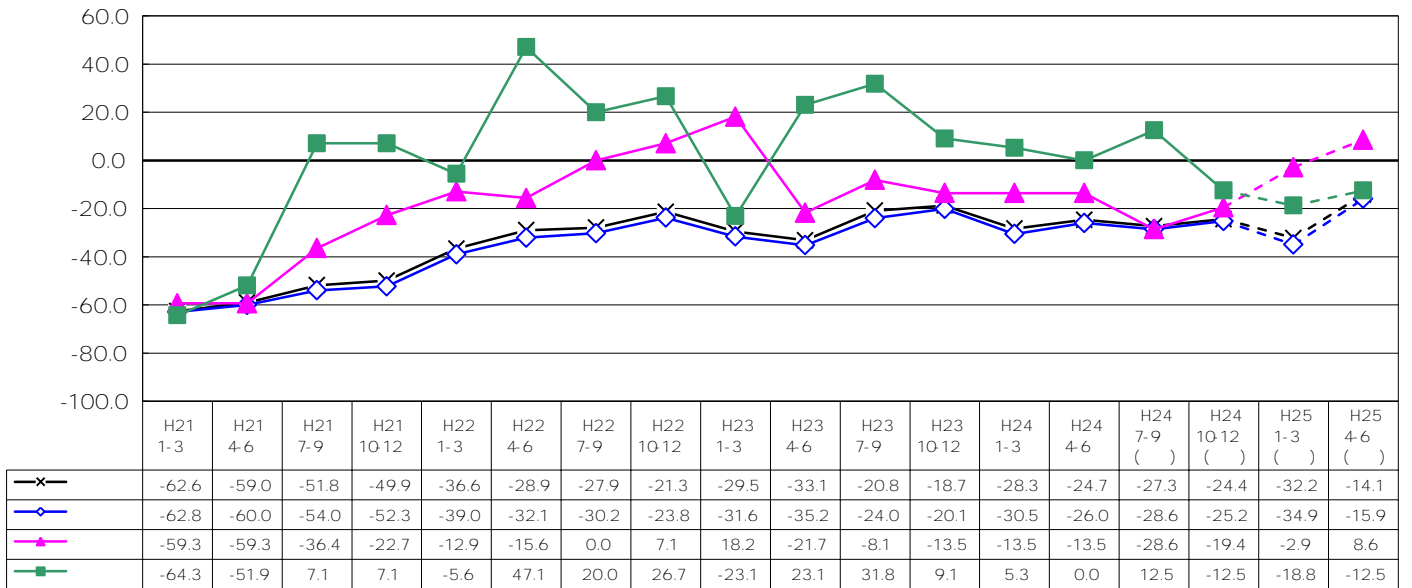
10 12

10 12

(製造・非製造業別)



(規模別)



( % )

7 9

10 12

10 12

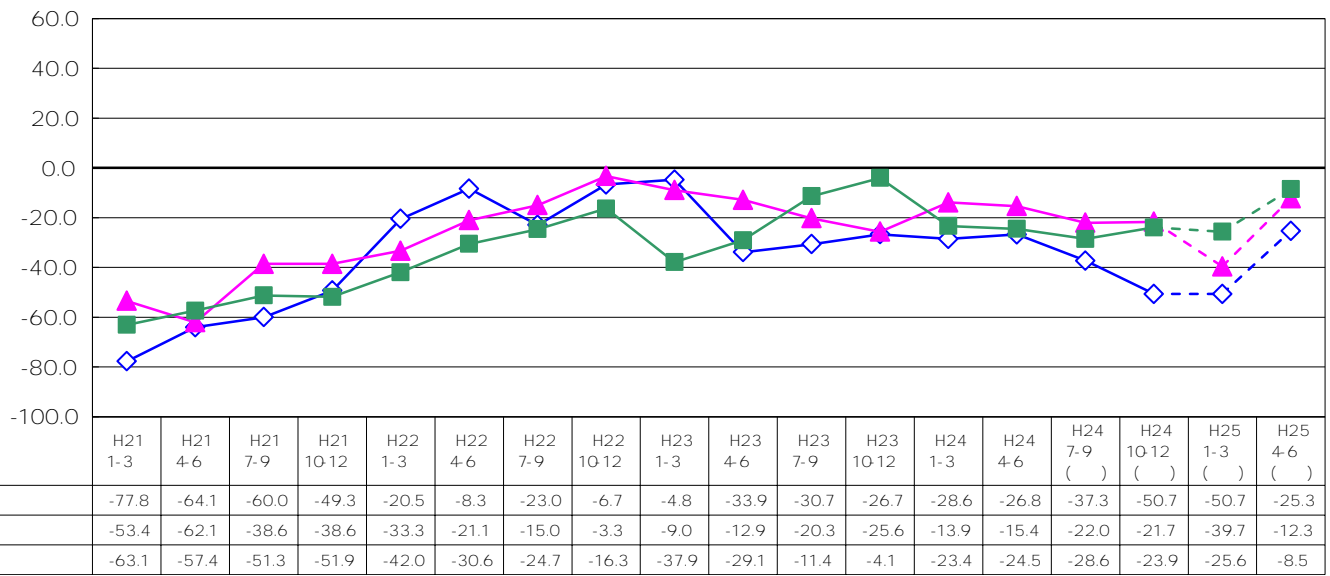
4 6

± 0

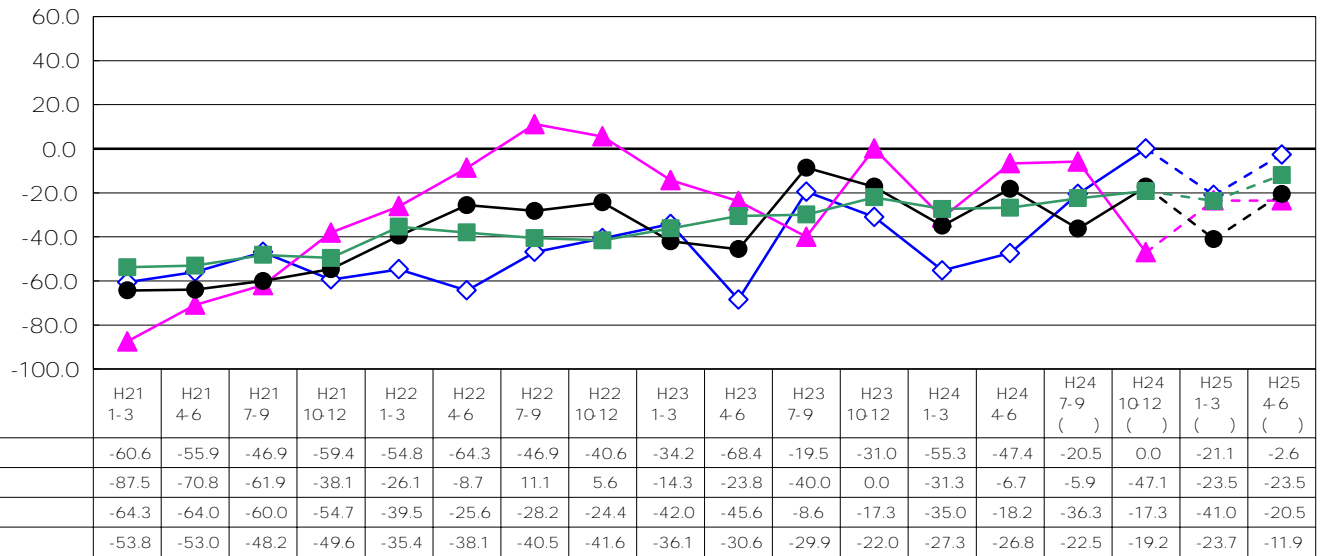
10 12

40

(業種別)  
[製造業]



[非製造業]



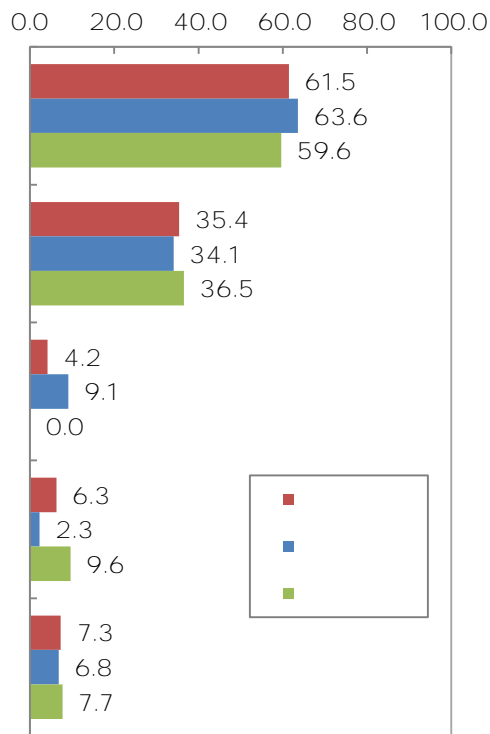
( % )

( 3 - 1 )

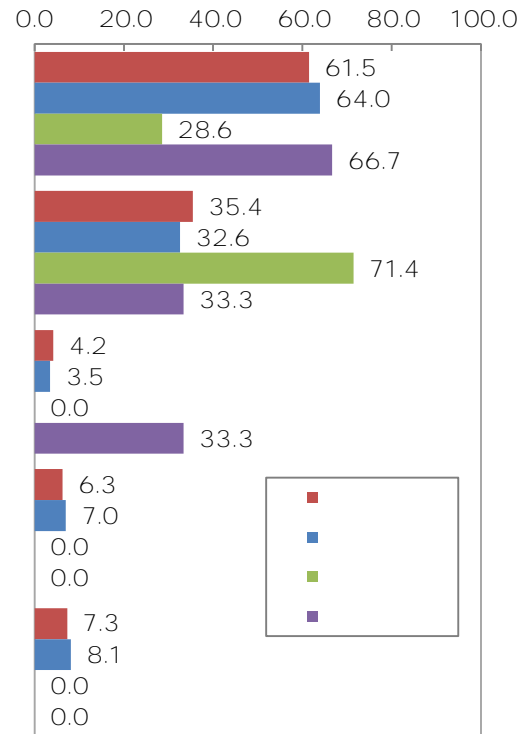
7                      5                      61.5                      (71.4 )

354

(製造・非製造業別)



(規模別)

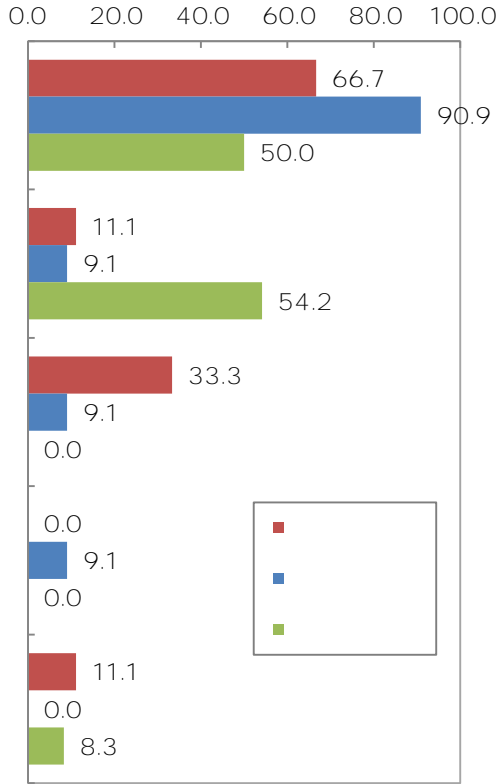


	96	59	34	4	6	7	0
	100.0	61.5	35.4	4.2	6.3	7.3	0.0
	44	28	15	4	1	3	0
	100.0	63.6	34.1	9.1	2.3	6.8	0.0
	52	31	19	0	5	4	0
	100.0	59.6	36.5	0.0	9.6	7.7	0.0
	86	55	28	3	6	7	0
	100.0	64.0	32.6	3.5	7.0	8.1	0.0
	7	2	5	0	0	0	0
	100.0	28.6	71.4	0.0	0.0	0.0	0.0
	3	2	1	1	0	0	0
	100.0	66.7	33.3	33.3	0.0	0.0	0.0

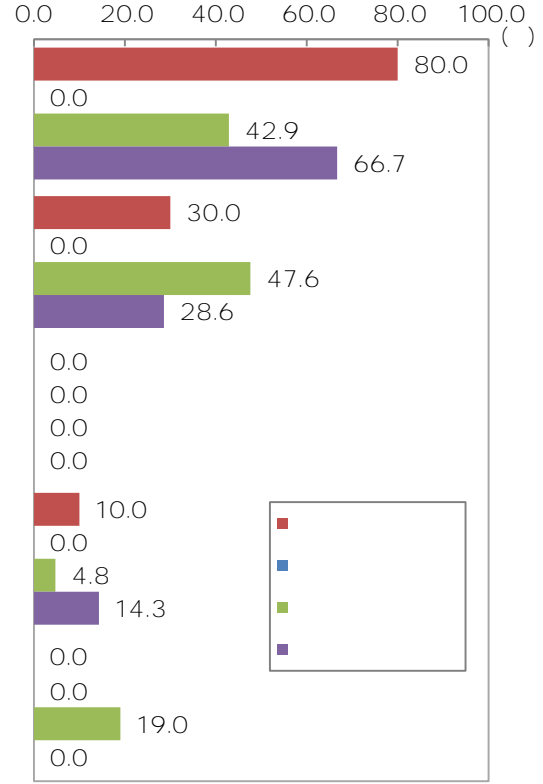
909  
542  
800

(業種別)

[製造業]



[非製造業]



(

	9	6	1	3	0	1	0	
	100.0	66.7	11.1	33.3	0.0	11.1	0.0	
	11	10	1	1	1	0	0	
	100.0	90.9	9.1	9.1	9.1	0.0	0.0	
	24	12	13	0	0	2	0	
	100.0	50.0	54.2	0.0	0.0	8.3	0.0	
	10	8	3	0	1	0	0	
	100.0	80.0	30.0	0.0	10.0	0.0	0.0	
	0	0	0	0	0	0	0	
	0.0	0.0	0.0	0.0	0.0	0.0	0.0	
	21	9	10	0	1	4	0	
	100.0	42.9	47.6	0.0	4.8	19.0	0.0	
	21	14	6	0	3	0	0	
	100.0	66.7	28.6	0.0	14.3	0.0	0.0	

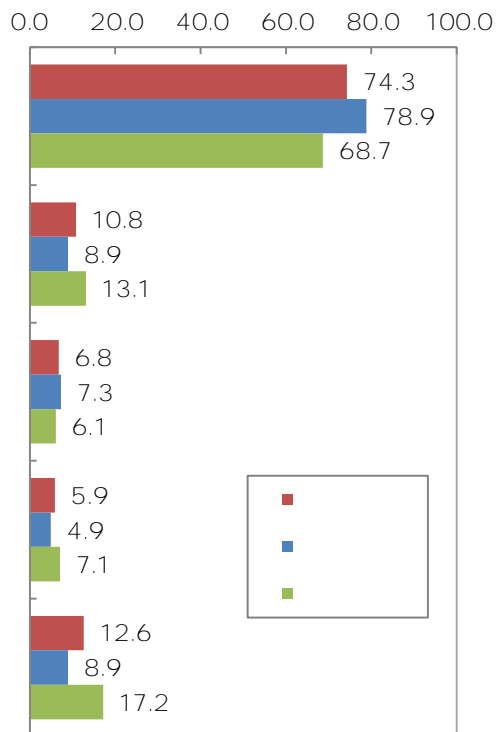
3



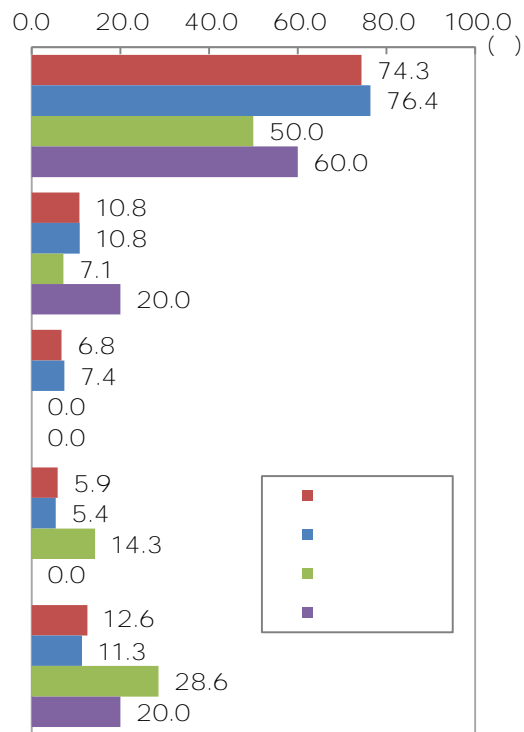
( 3 - 2 )

8 743 789 687 4  
29 10

(製造・非製造業別)



(規模別)



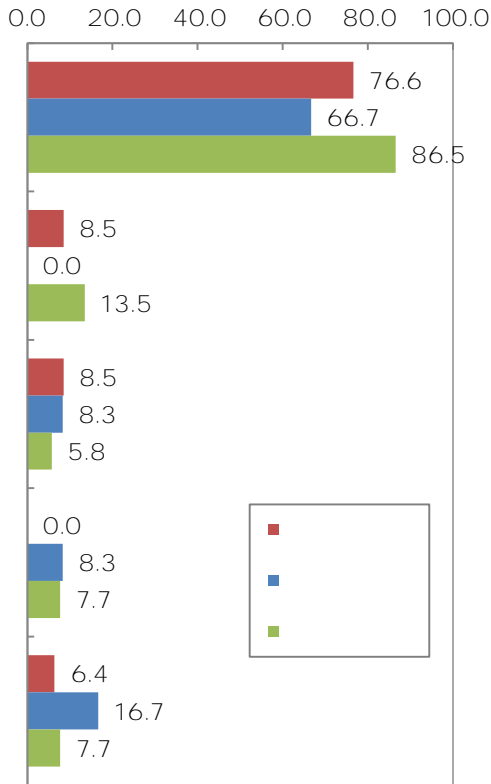
(

	222	165	24	15	13	28	12	
	100.0	74.3	10.8	6.8	5.9	12.6	5.4	
	123	97	11	9	6	11	7	
	100.0	78.9	8.9	7.3	4.9	8.9	5.7	
	99	68	13	6	7	17	5	
	100.0	68.7	13.1	6.1	7.1	17.2	5.1	
	203	155	22	15	11	23	12	
	100.0	76.4	10.8	7.4	5.4	11.3	5.9	
	14	7	1	0	2	4	0	
	100.0	50.0	7.1	0.0	14.3	28.6	0.0	
	5	3	1	0	0	1	0	
	100.0	60.0	20.0	0.0	0.0	20.0	0.0	

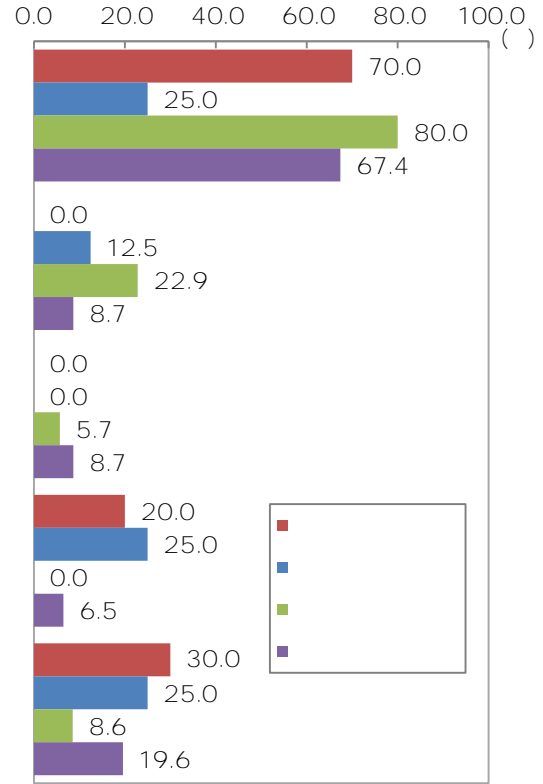
3

(業種別)

[製造業]



[非製造業]



(

	47	36	4	4	0	3	4	
	100.0	76.6	8.5	8.5	0.0	6.4	8.5	
	24	16	0	2	2	4	2	
	100.0	66.7	0.0	8.3	8.3	16.7	8.3	
	52	45	7	3	4	4	1	
	100.0	86.5	13.5	5.8	7.7	7.7	1.9	
	10	7	0	0	2	3	0	
	100.0	70.0	0.0	0.0	20.0	30.0	0.0	
	8	2	1	0	2	2	1	
	100.0	25.0	12.5	0.0	25.0	25.0	12.5	
	35	28	8	2	0	3	1	
	100.0	80.0	22.9	5.7	0.0	8.6	2.9	
	46	31	4	4	3	9	3	
	100.0	67.4	8.7	8.7	6.5	19.6	6.5	

( 4 )

1 3

4 6

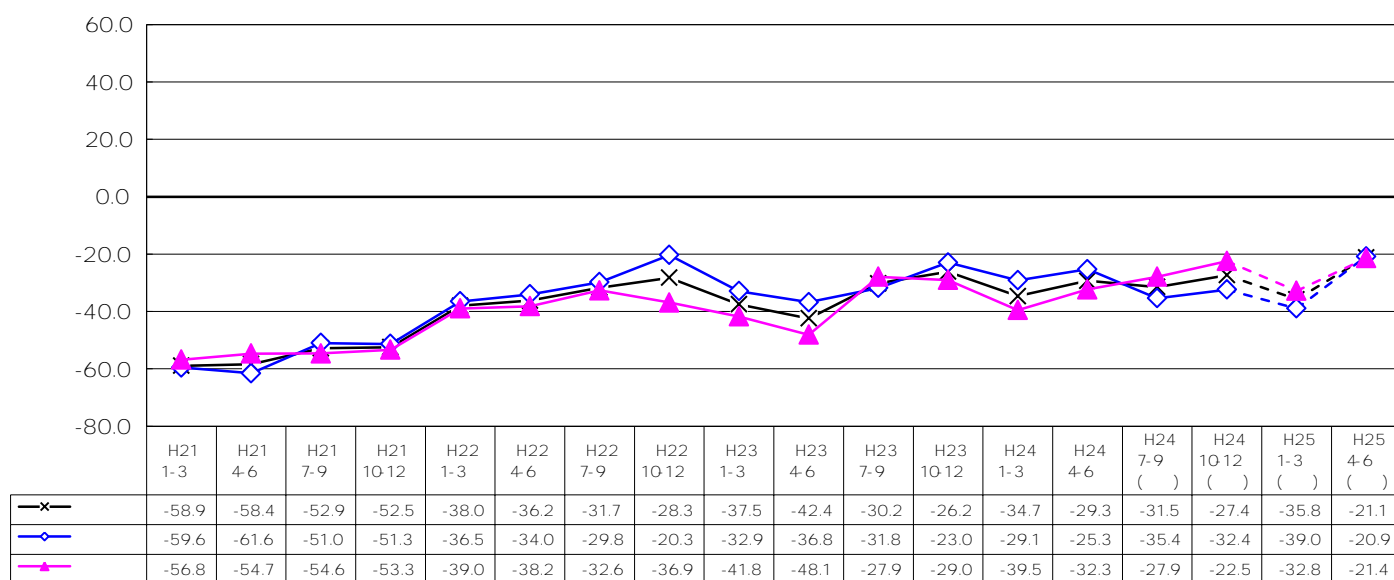
7 9 10

10 12

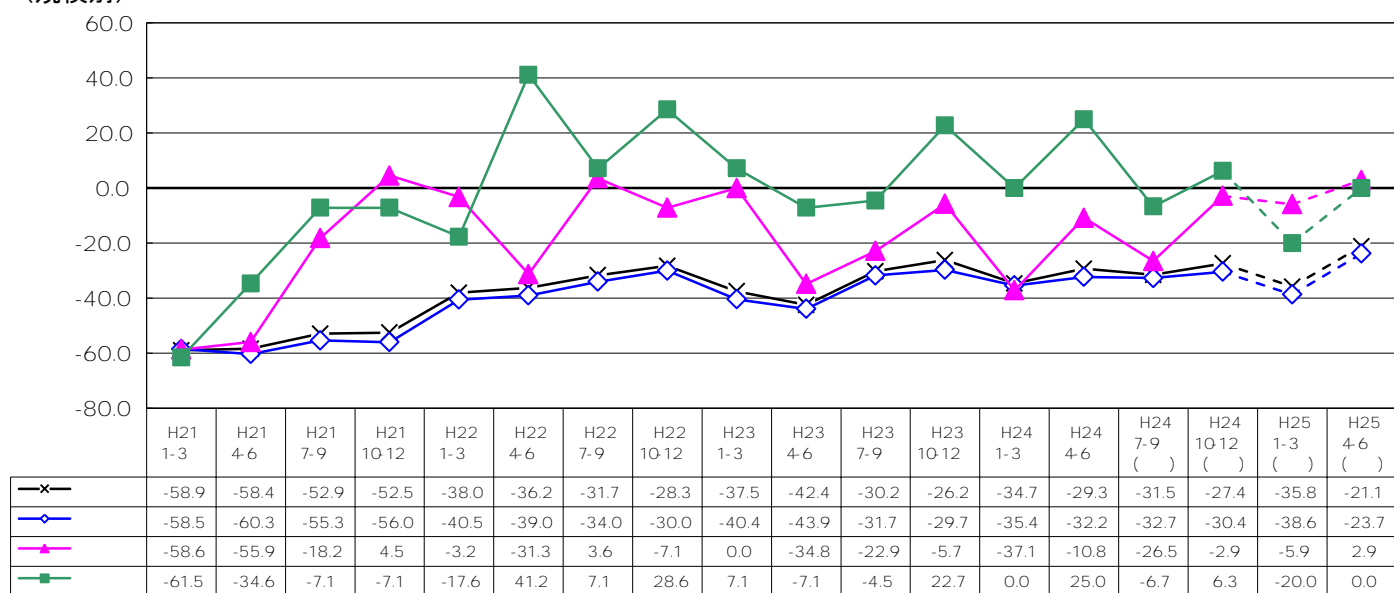
10 12

1 3

(製造・非製造業別)



(規模別)



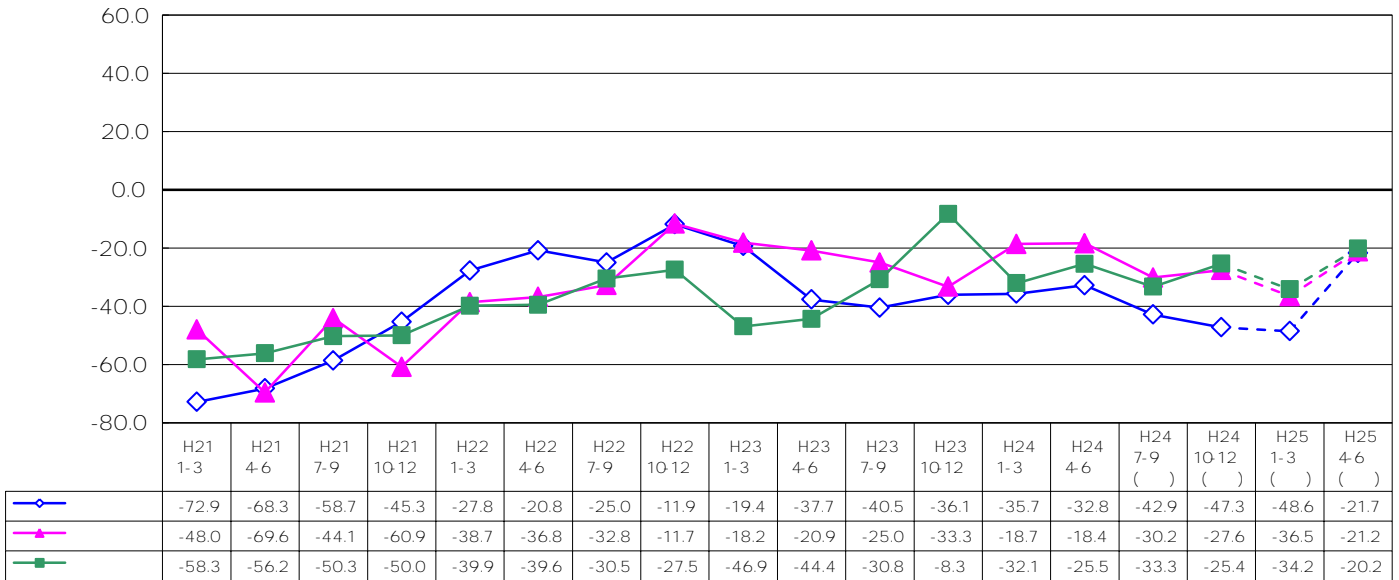
( % )

7 9                      10 12                                      4 6

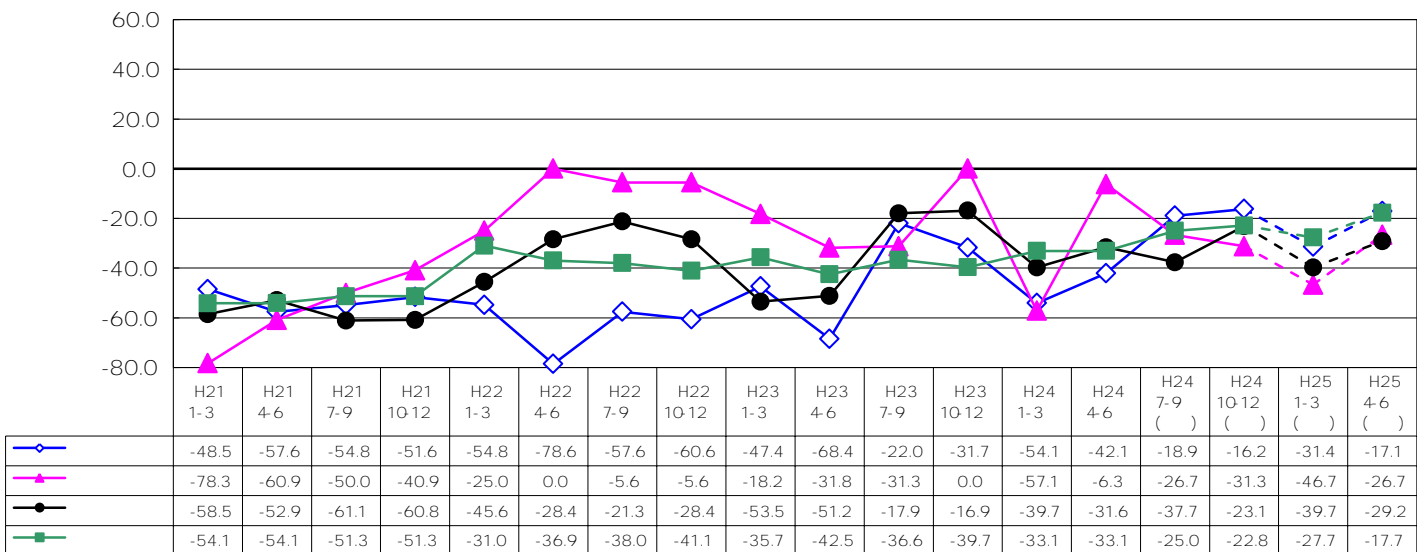
7 9                      20                                      1 3                                      1 3

10 12                      15                                      1 3

(業種別)  
[製造業]

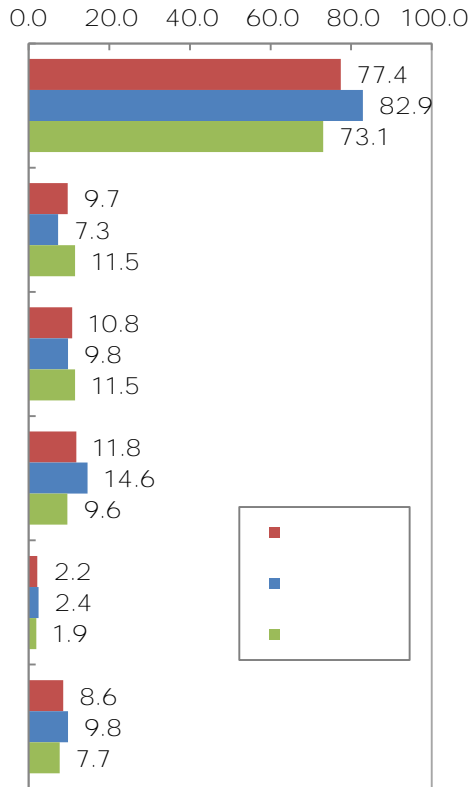


[非製造業]

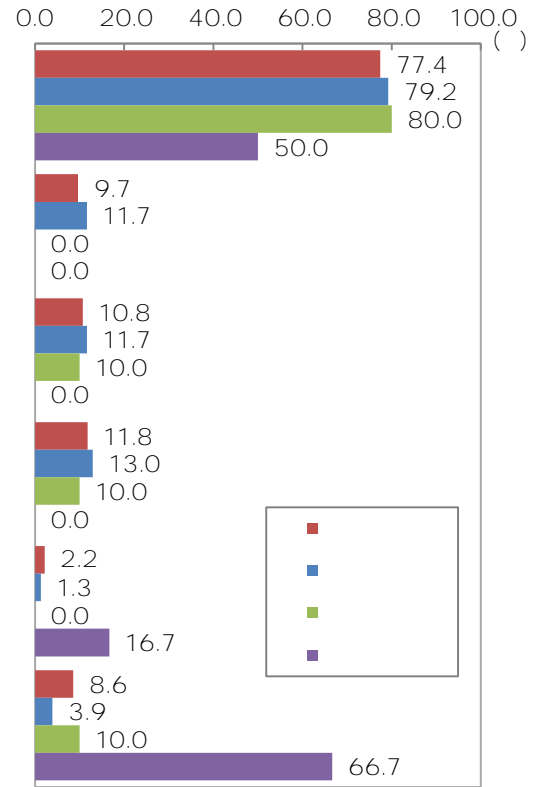


( % )

(製造・非製造業別)

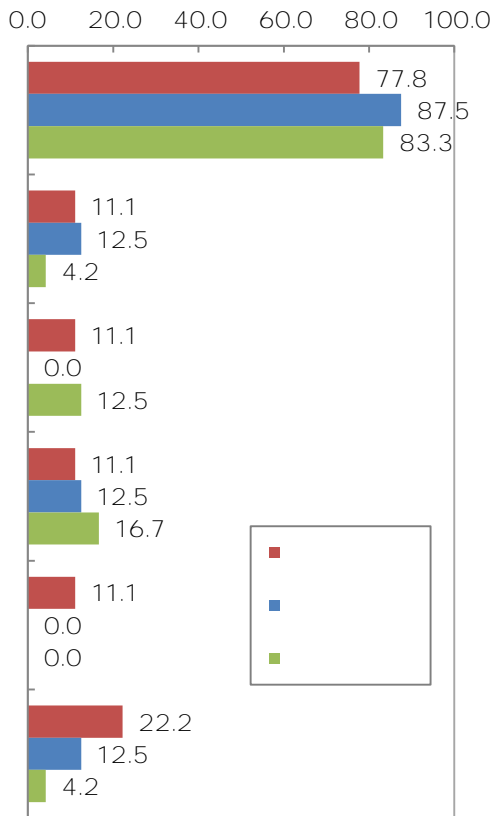


(規模別)

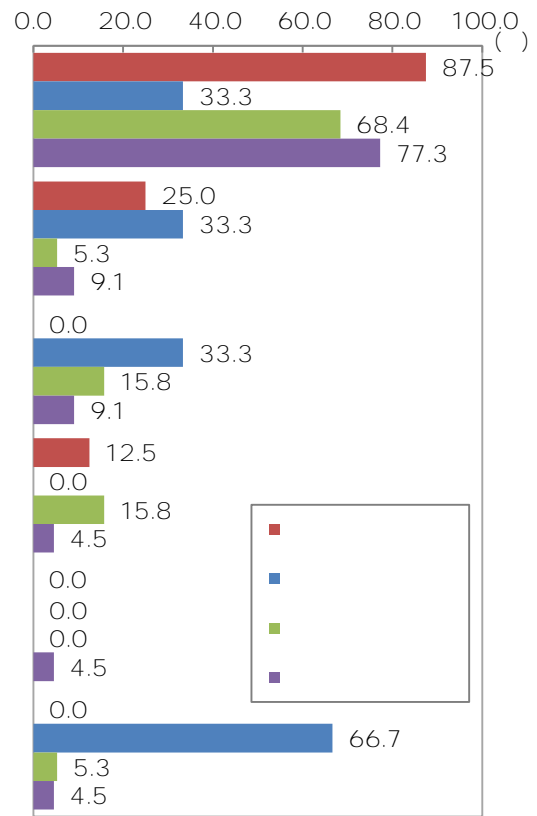


	93	72	9	10	11	2	8	1
	100.0	77.4	9.7	10.8	11.8	2.2	8.6	1.1
	41	34	3	4	6	1	4	0
	100.0	82.9	7.3	9.8	14.6	2.4	9.8	0.0
	52	38	6	6	5	1	4	1
	100.0	73.1	11.5	11.5	9.6	1.9	7.7	1.9
	77	61	9	9	10	1	3	1
	100.0	79.2	11.7	11.7	13.0	1.3	3.9	1.3
	10	8	0	1	1	0	1	0
	100.0	80.0	0.0	10.0	10.0	0.0	10.0	0.0
	6	3	0	0	0	1	4	0
	100.0	50.0	0.0	0.0	0.0	16.7	66.7	0.0

[製造業]



[非製造業]



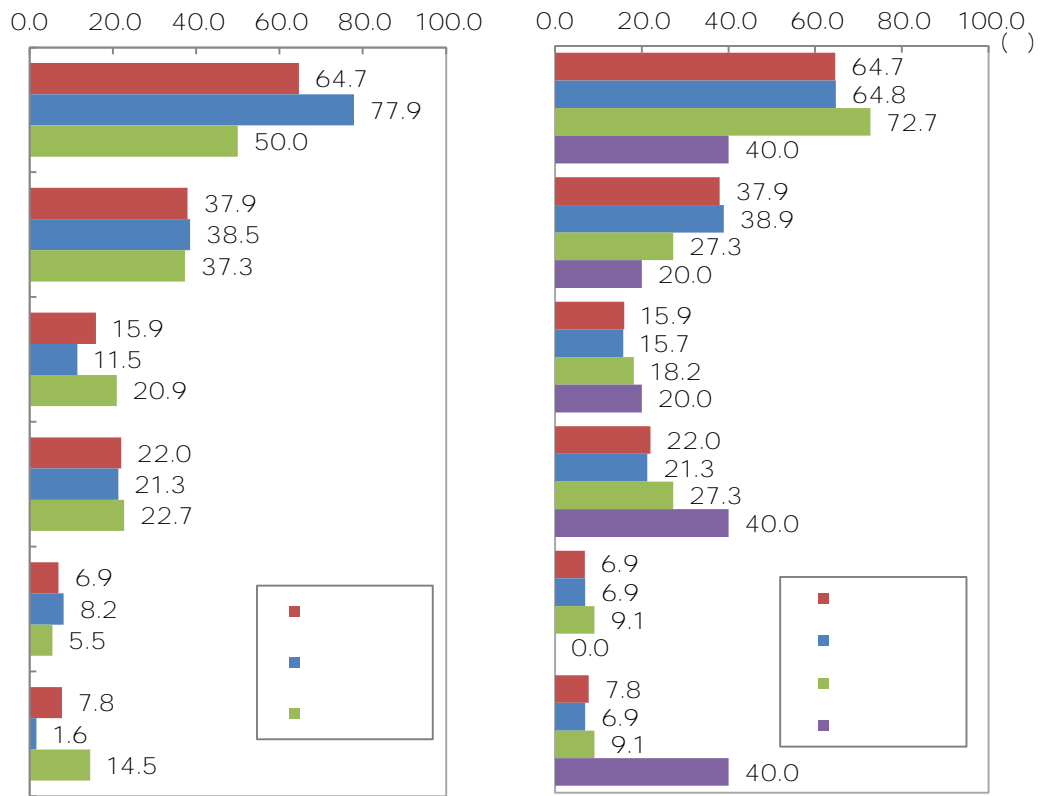
	9	7	1	1	1	1	2	0	0
	100.0	77.8	11.1	11.1	11.1	11.1	22.2	0.0	0.0
	8	7	1	0	1	0	1	0	0
	100.0	87.5	12.5	0.0	12.5	0.0	12.5	0.0	0.0
	24	20	1	3	4	0	1	0	0
	100.0	83.3	4.2	12.5	16.7	0.0	4.2	0.0	0.0
	8	7	2	0	1	0	0	0	0
	100.0	87.5	25.0	0.0	12.5	0.0	0.0	0.0	0.0
	3	1	1	1	0	0	2	0	0
	100.0	33.3	33.3	33.3	0.0	0.0	66.7	0.0	0.0
	19	13	1	3	3	0	1	1	1
	100.0	68.4	5.3	15.8	15.8	0.0	5.3	5.3	5.3
	22	17	2	2	1	1	1	0	0
	100.0	77.3	9.1	9.1	4.5	4.5	4.5	0.0	0.0

( 4 - 2 )

(220 )                      647                      (379 )  
                                        77.9                      (500)  
    389

(製造・非製造業別)

(規模別)



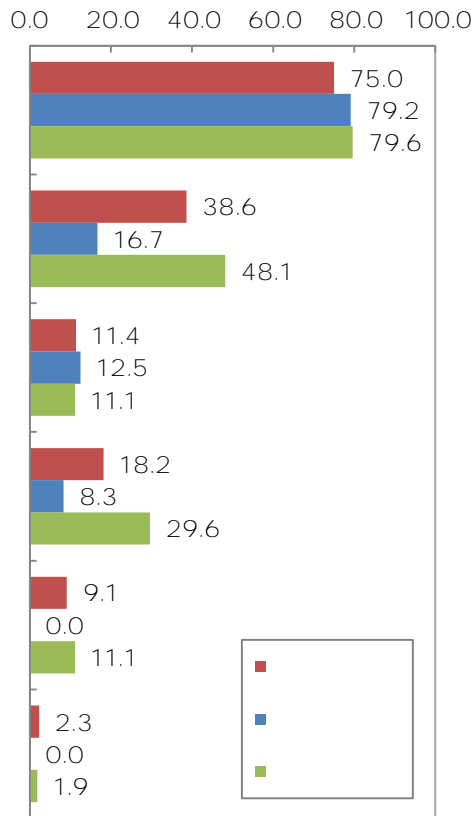
	232	150	88	37	51	16	18	14	
	100.0	64.7	37.9	15.9	22.0	6.9	7.8	6.0	
	122	95	47	14	26	10	2	8	
	100.0	77.9	38.5	11.5	21.3	8.2	1.6	6.6	
	110	55	41	23	25	6	16	6	
	100.0	50.0	37.3	20.9	22.7	5.5	14.5	5.5	
	216	140	84	34	46	15	15	14	
	100.0	64.8	38.9	15.7	21.3	6.9	6.9	6.5	
	11	8	3	2	3	1	1	0	
	100.0	72.7	27.3	18.2	27.3	9.1	9.1	0.0	
	5	2	1	1	2	0	2	0	
	100.0	40.0	20.0	20.0	40.0	0.0	40.0	0.0	

500

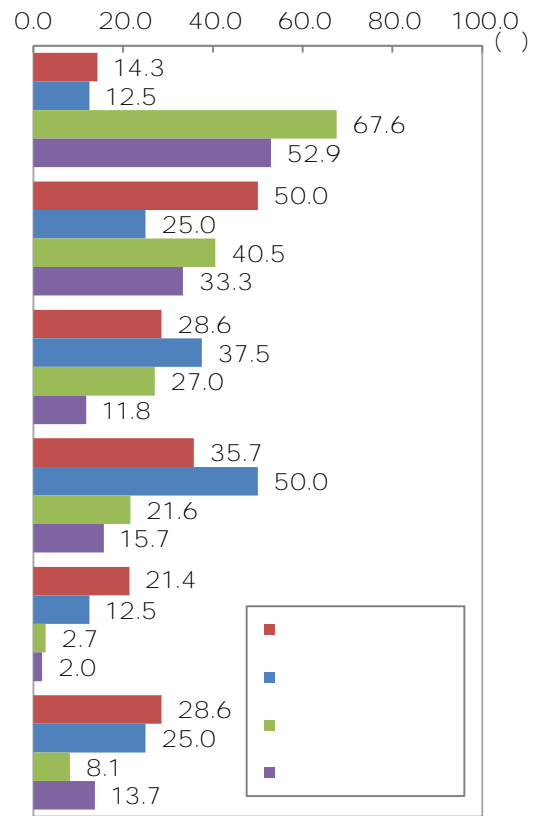
(500

(業種別)

[製造業]



[非製造業]



	44	33	17	5	8	4	1	4	
	100.0	75.0	38.6	11.4	18.2	9.1	2.3	9.1	
	24	19	4	3	2	0	0	2	
	100.0	79.2	16.7	12.5	8.3	0.0	0.0	8.3	
	54	43	26	6	16	6	1	2	
	100.0	79.6	48.1	11.1	29.6	11.1	1.9	3.7	
	14	2	7	4	5	3	4	0	
	100.0	14.3	50.0	28.6	35.7	21.4	28.6	0.0	
	8	1	2	3	4	1	2	0	
	100.0	12.5	25.0	37.5	50.0	12.5	25.0	0.0	
	37	25	15	10	8	1	3	1	
	100.0	67.6	40.5	27.0	21.6	2.7	8.1	2.7	
	51	27	17	6	8	1	7	5	
	100.0	52.9	33.3	11.8	15.7	2.0	13.7	9.8	

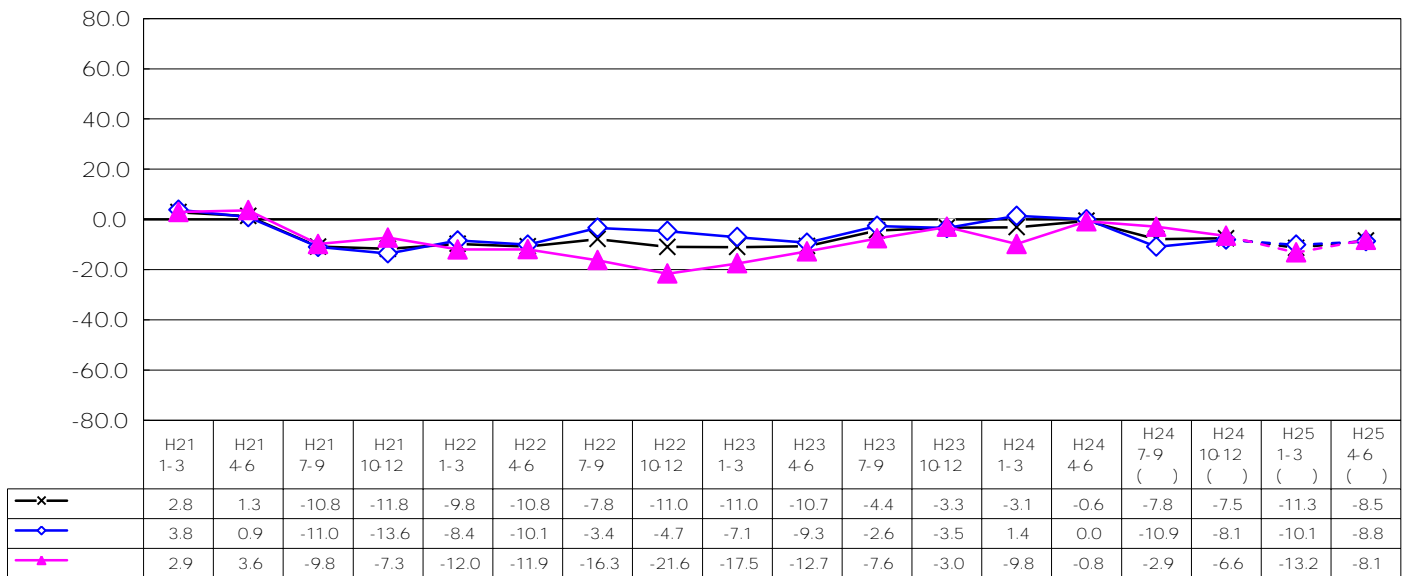


( 5 )

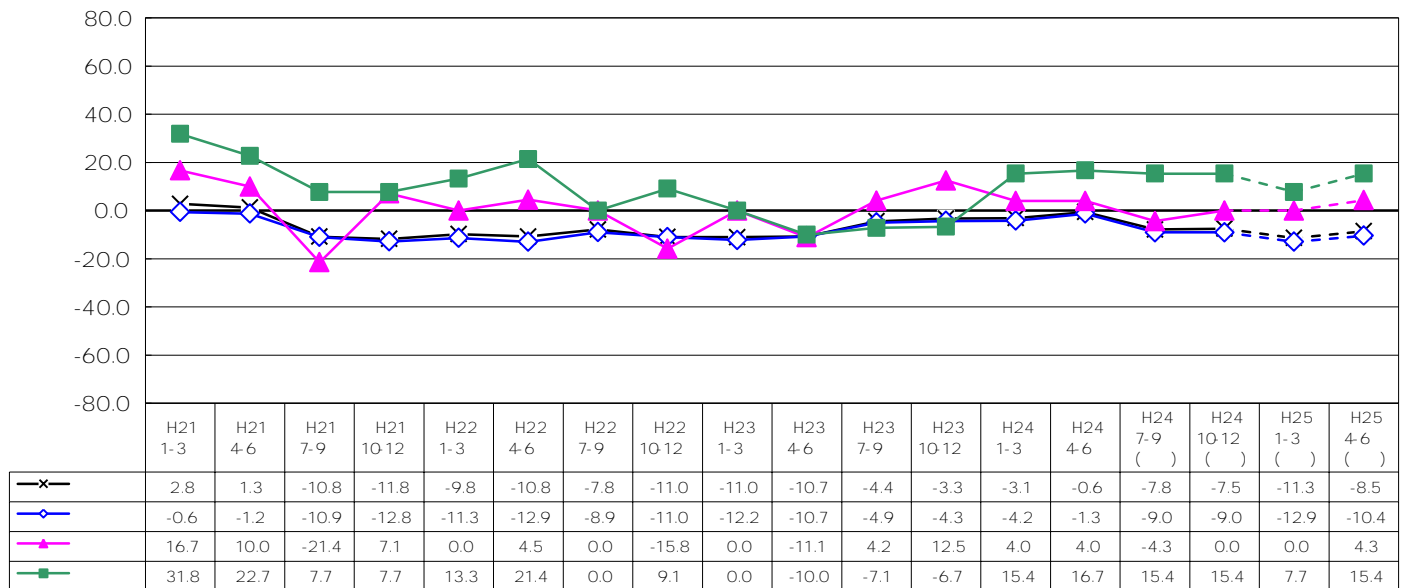
7 9

7 9

(製造・非製造業別)



(規模別)



( % )

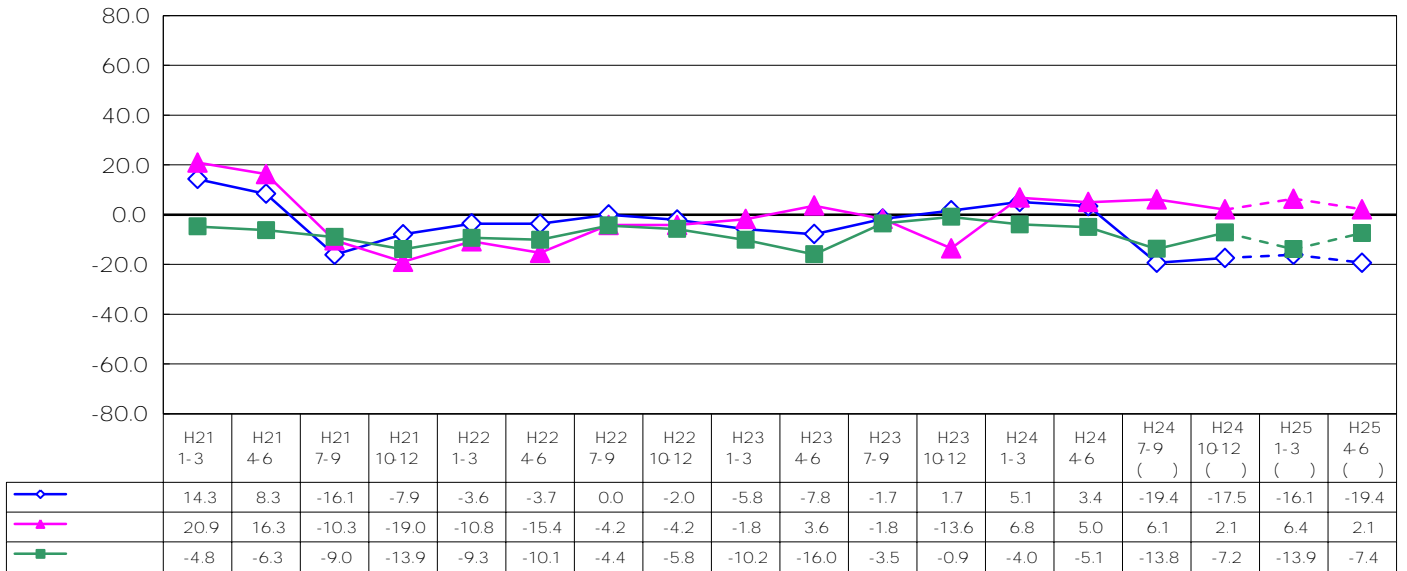
7 9 20

10 12

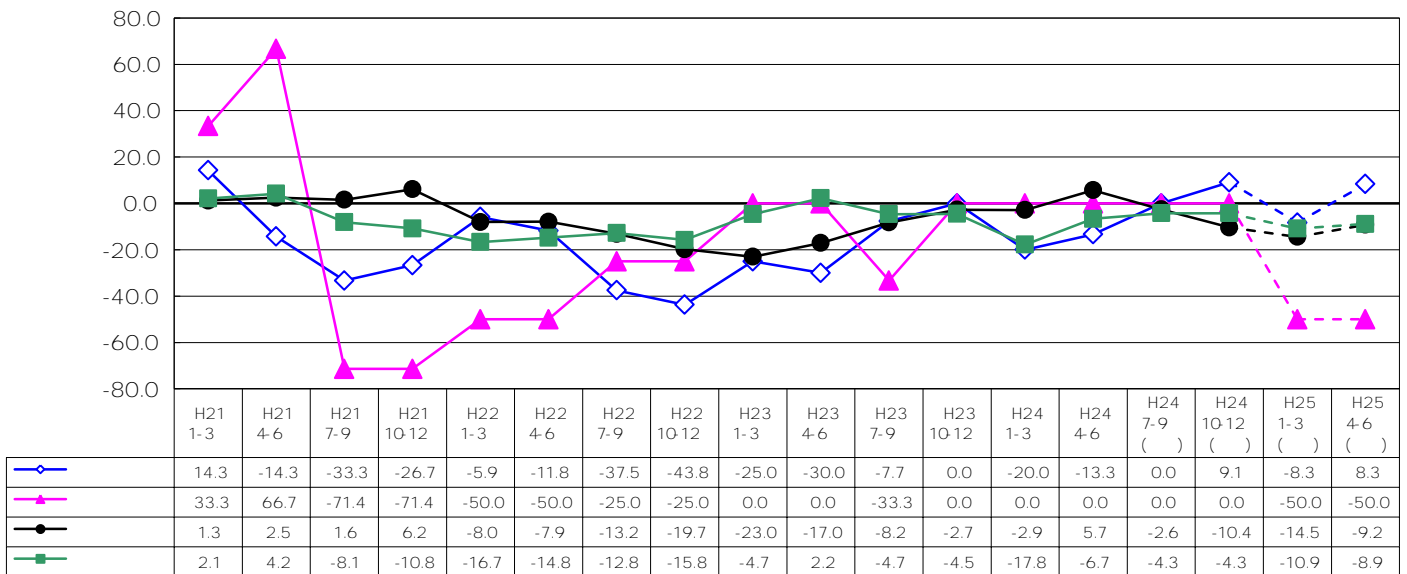
7 9

1 3

(業種別)  
[製造業]



[非製造業]

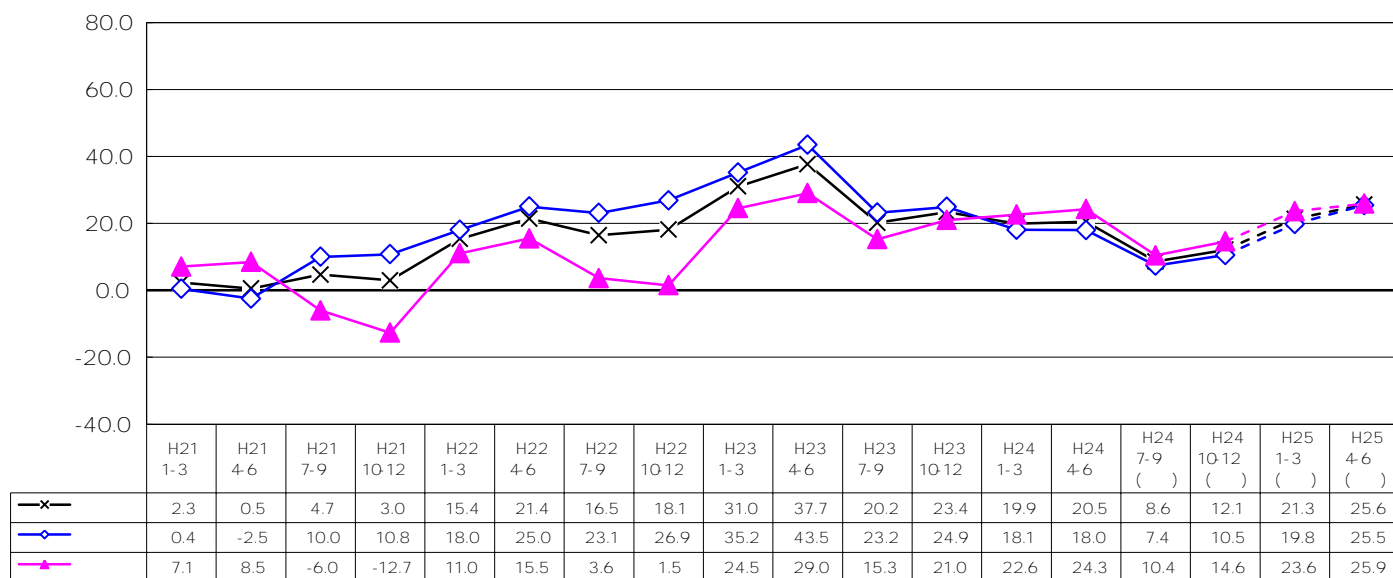


( % )

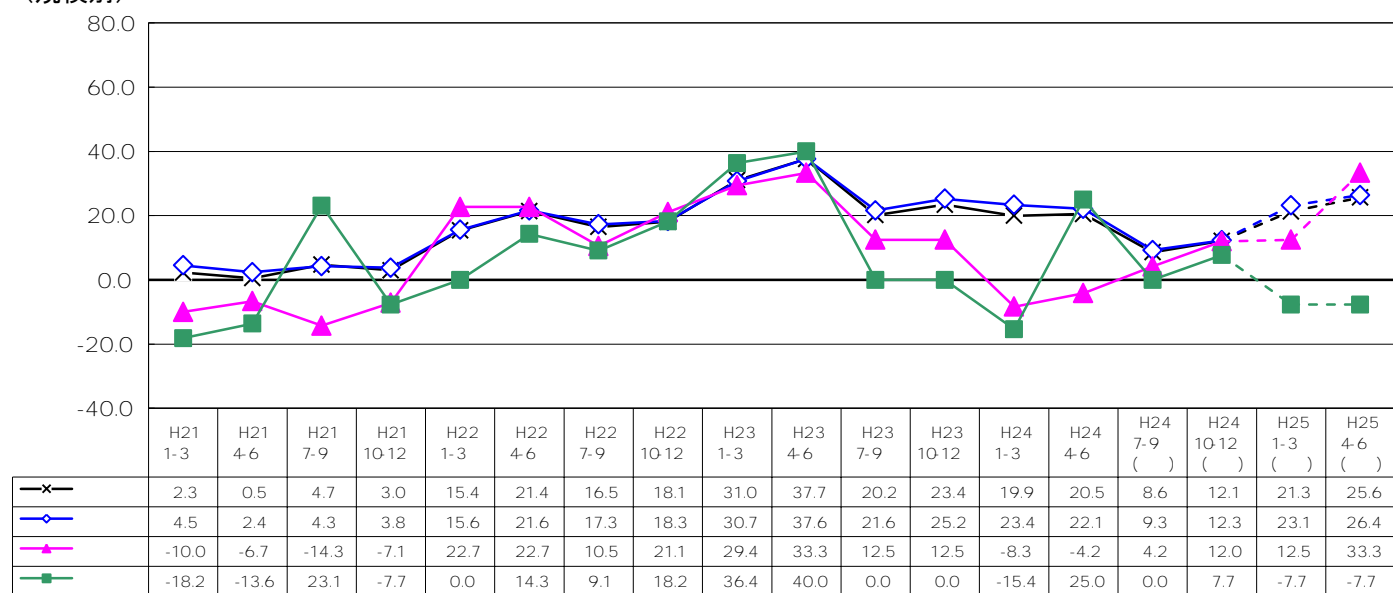
( 6 )

7 9 10  
7 9 10 12  
7 9 10 12

(製造・非製造業別)



(規模別)



( % )

3

7 9

10 12

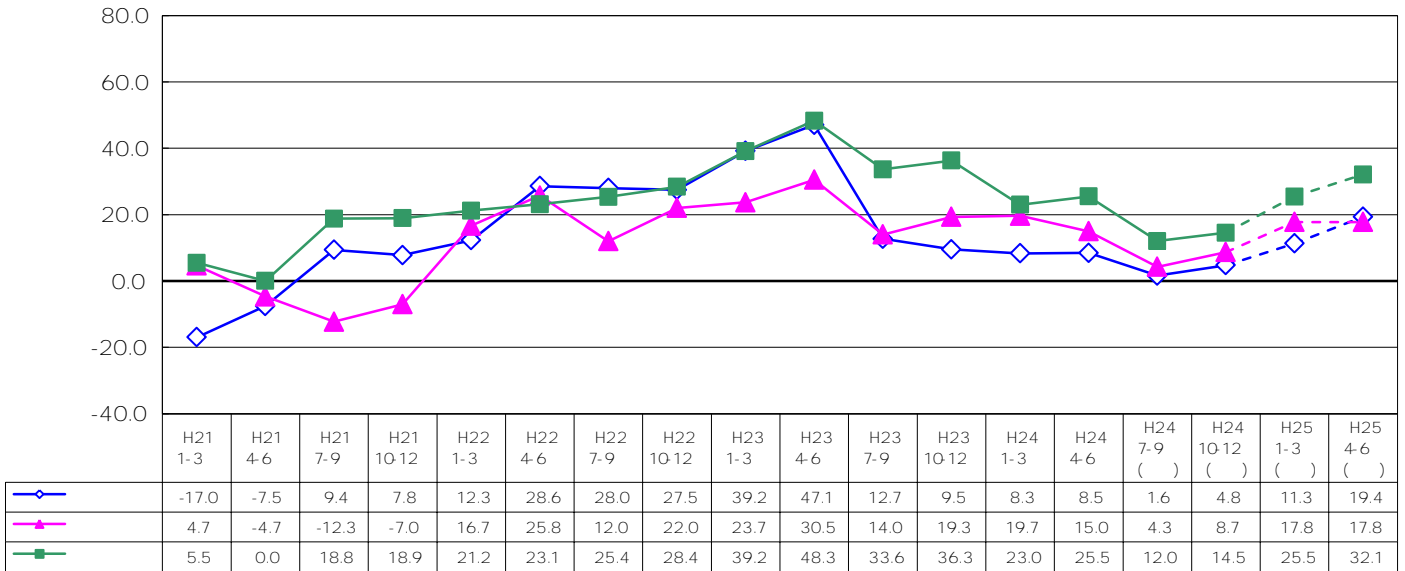
7 9 30

2

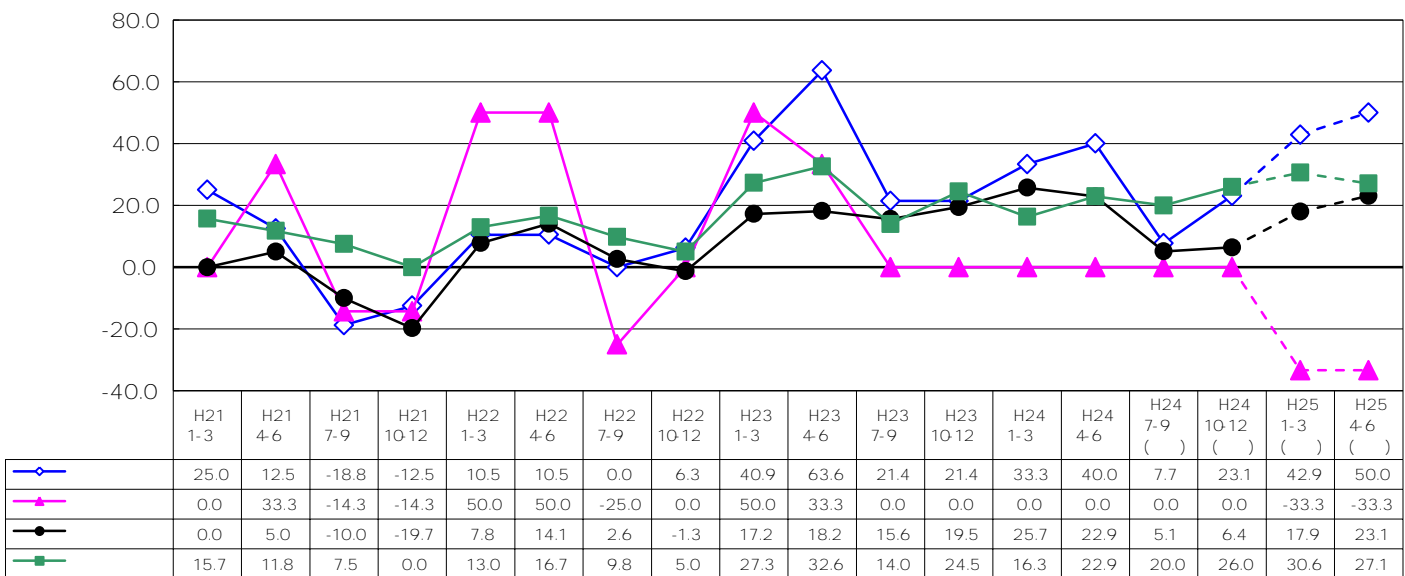
10 12

1 3

(業種別)  
[製造業]



[非製造業]



( % )

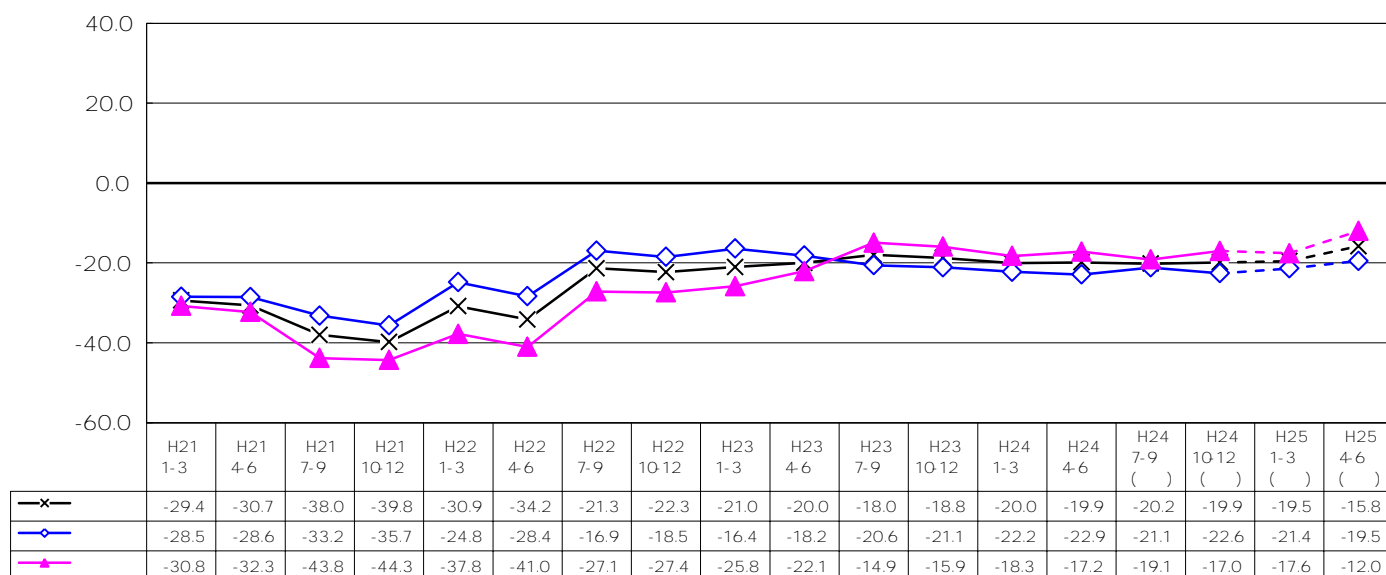
(7)

22 7 9

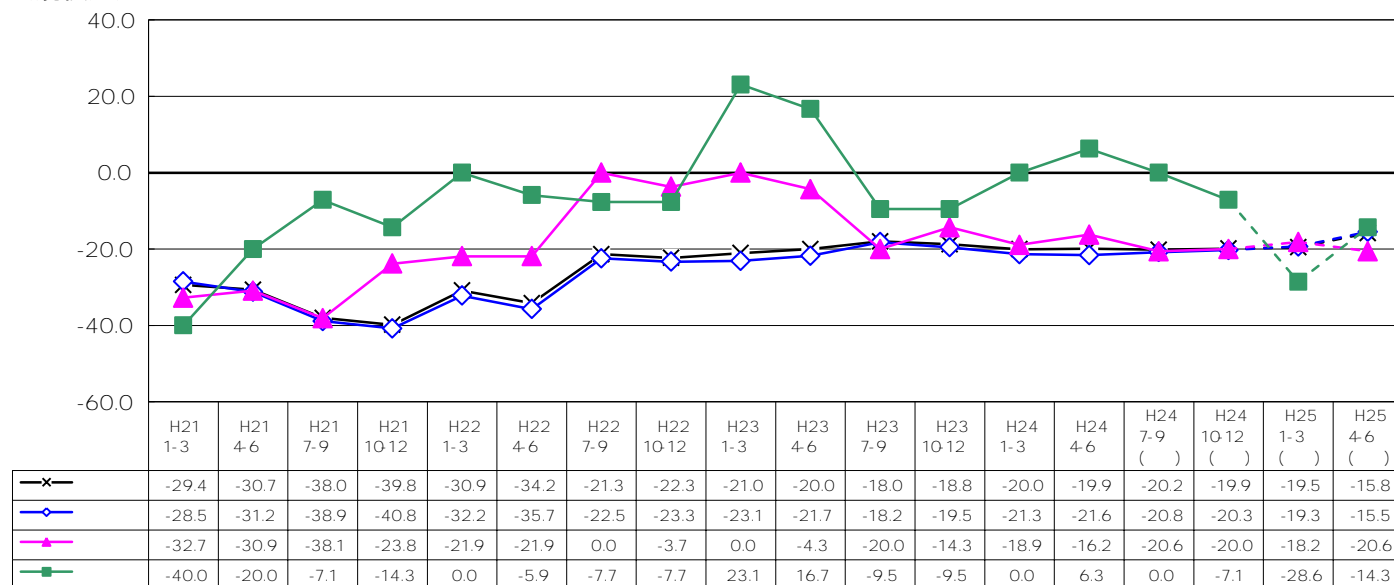
10 12

1 3

(製造・非製造業別)



(規模別)



(%)

10 12

1 3

10 12

4 6

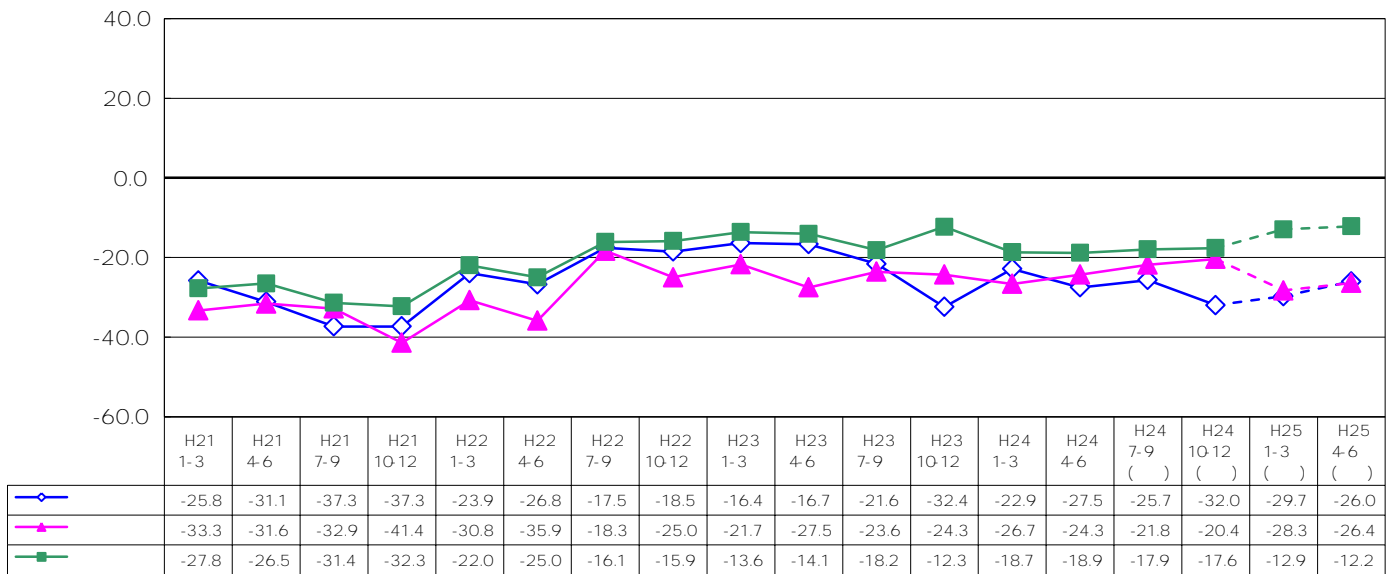
10 12

1 3

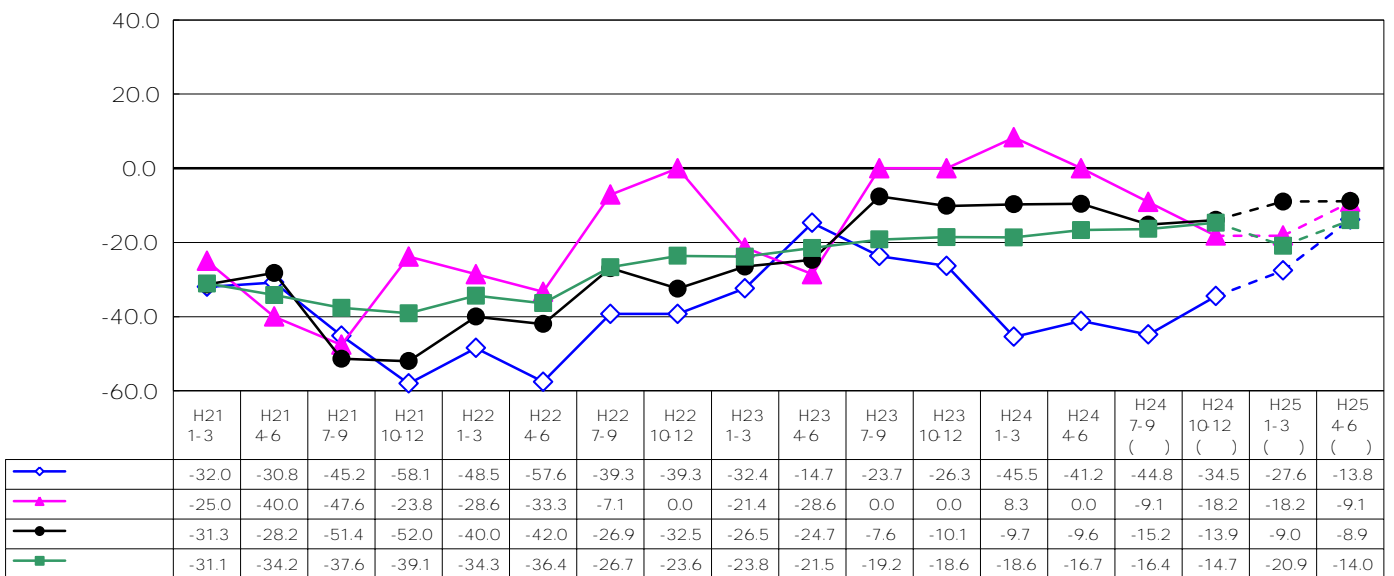
4 6

1 3

(業種別)  
[製造業]



[非製造業]



( % )

( 8 ) ( )

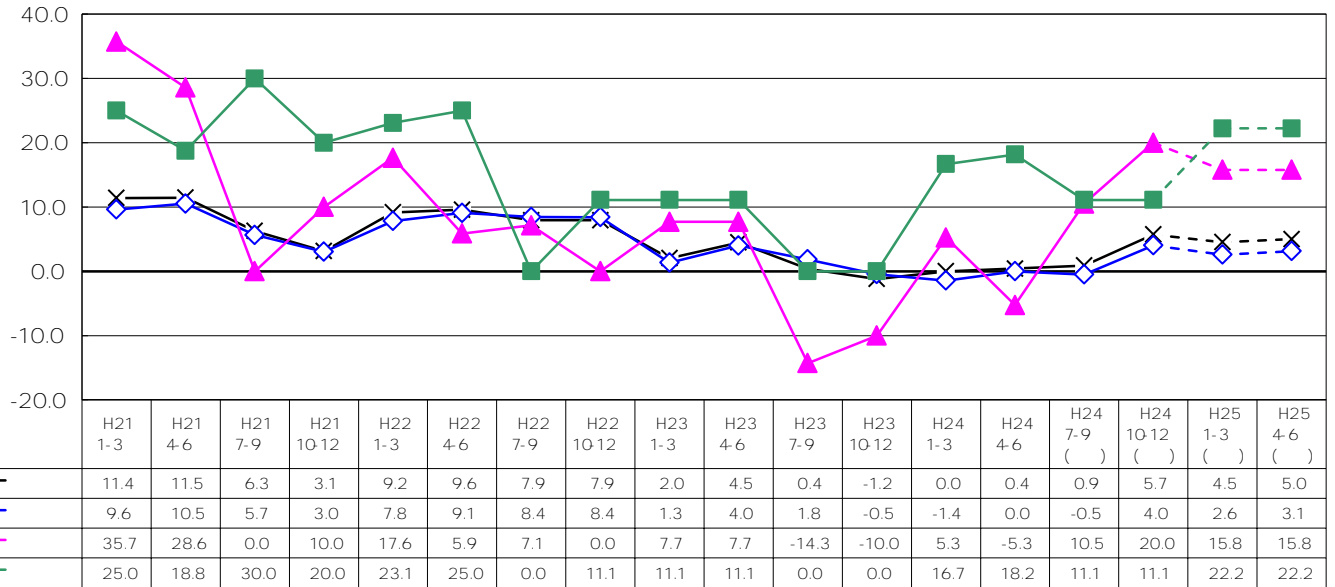
10 12

7 9  
7 9  
10 12 10

1 3

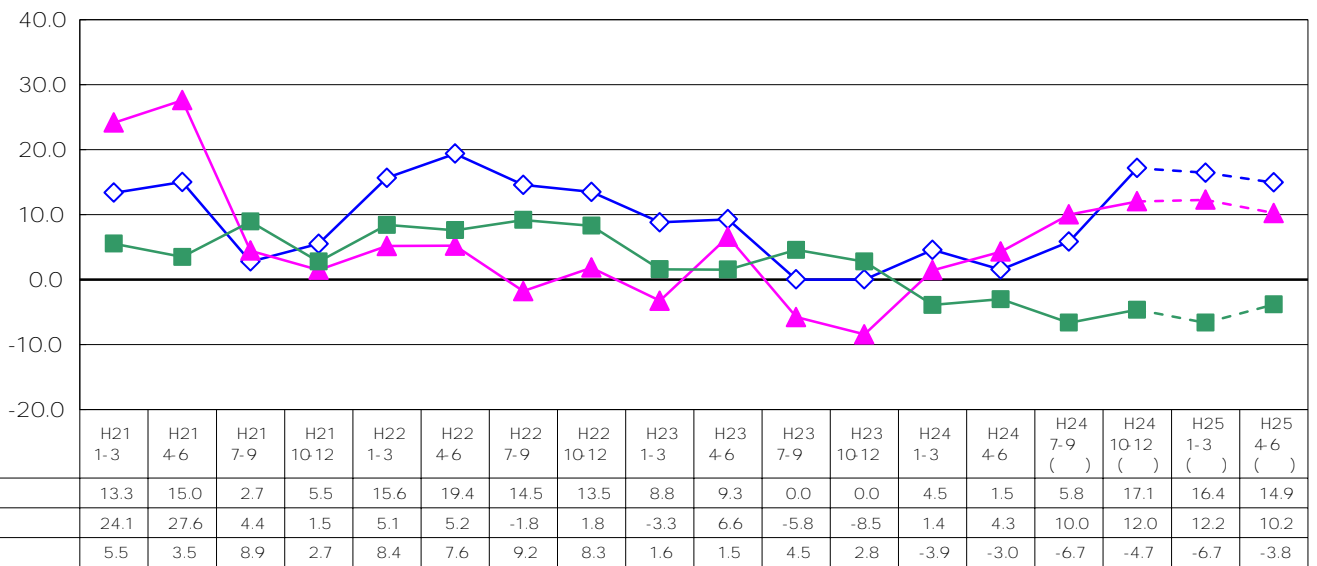
10 12

(規模別)



(業種別)

[ ]



( % )

( 9 )

10 12

270

7 9

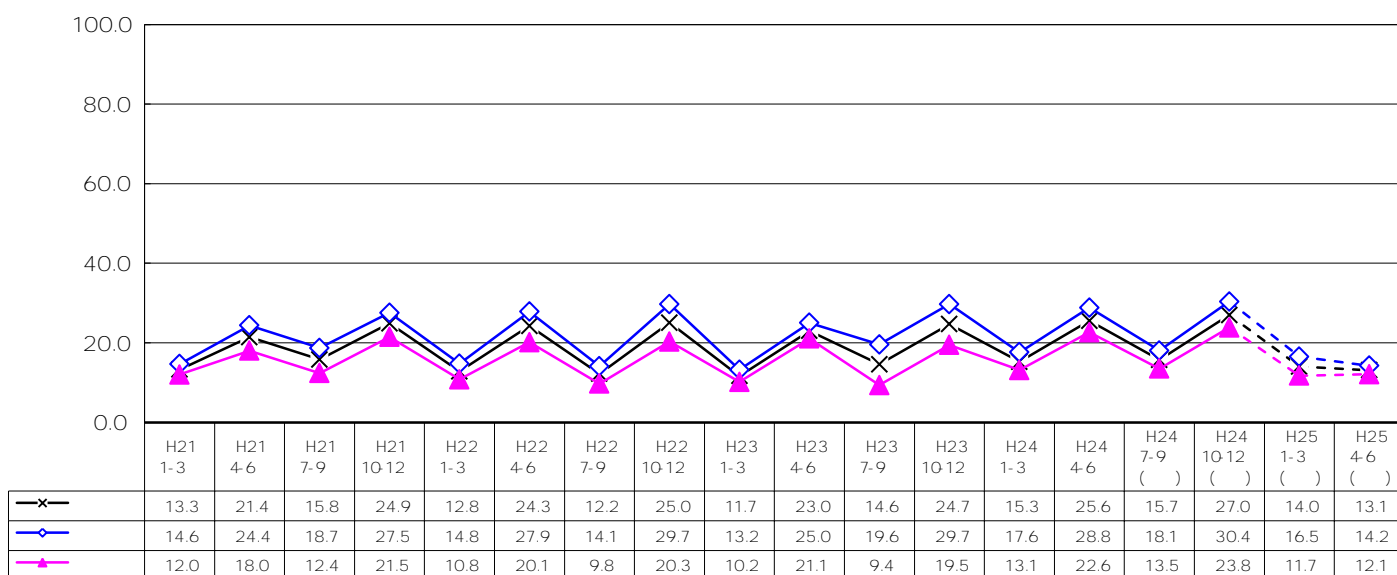
157

10

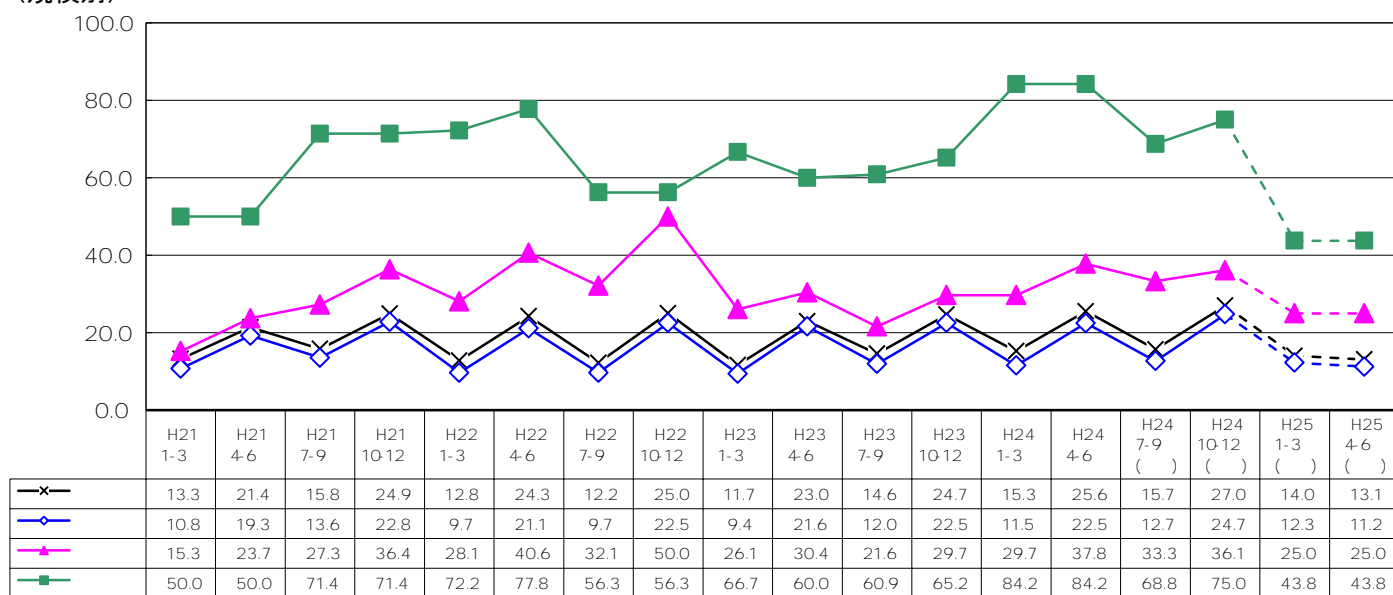
10 12

750

(製造・非製造業別)



(規模別)





10 12

128

23 10 12

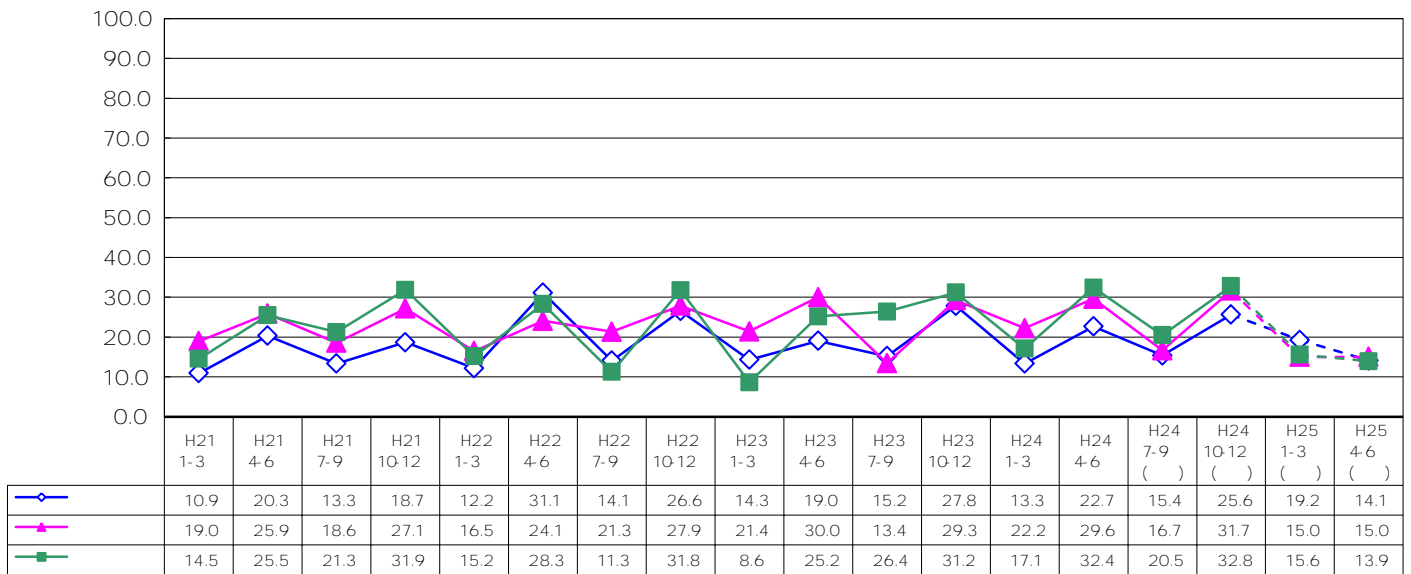
10 12

529

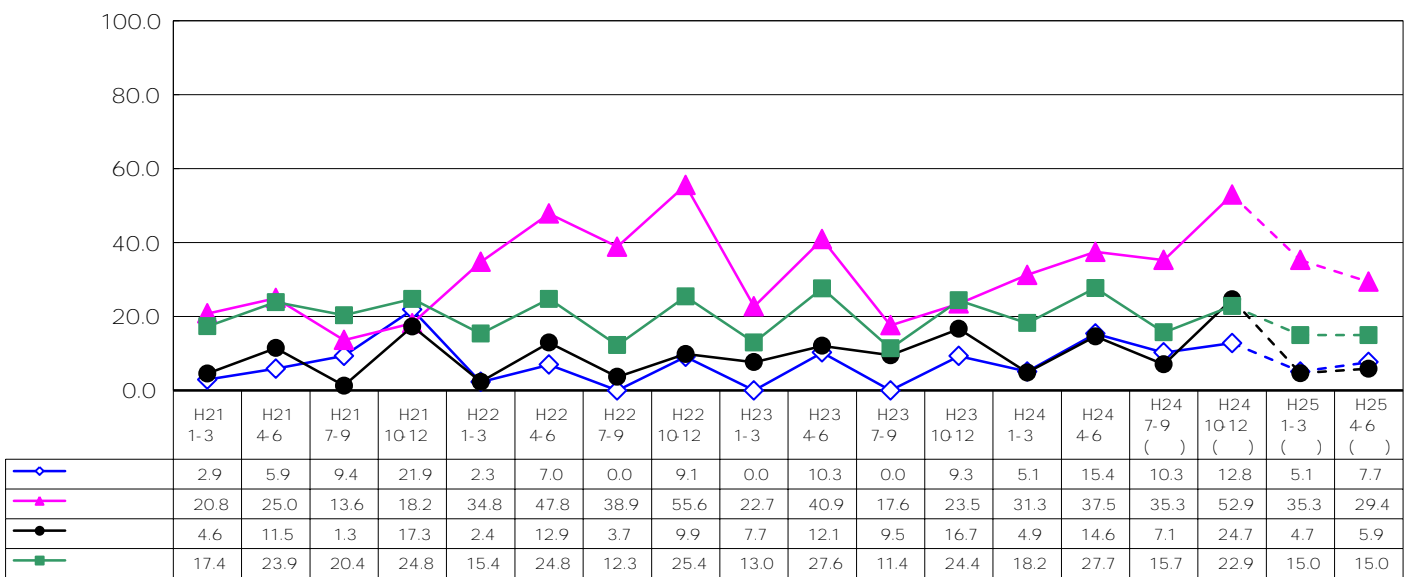
10 12

247

(業種別)  
[製造業]



[非製造業]



( 9 - 1 )

253

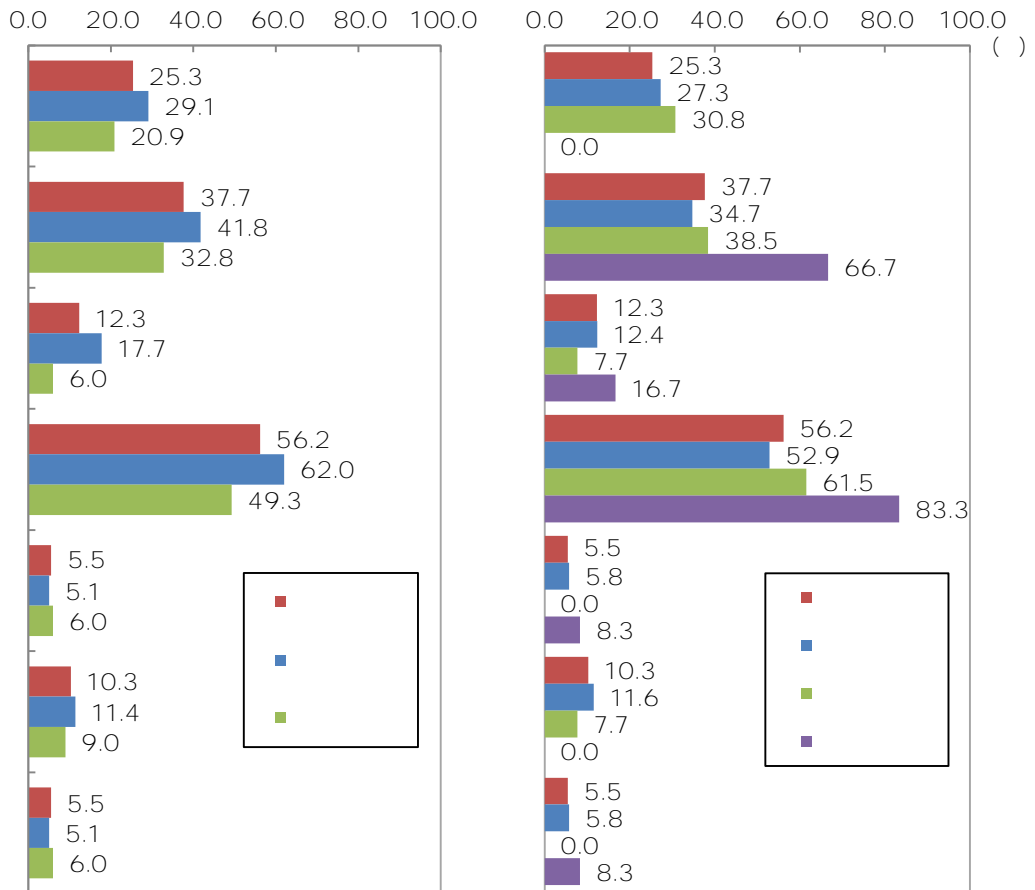
562

833

377

(製造・非製造業別)

(規模別)



	146	37	55	18	82	8	15	8	0
	100.0	25.3	37.7	12.3	56.2	5.5	10.3	5.5	0.0
	79	23	33	14	49	4	9	4	0
	100.0	29.1	41.8	17.7	62.0	5.1	11.4	5.1	0.0
	67	14	22	4	33	4	6	4	0
	100.0	20.9	32.8	6.0	49.3	6.0	9.0	6.0	0.0
	121	33	42	15	64	7	14	7	0
	100.0	27.3	34.7	12.4	52.9	5.8	11.6	5.8	0.0
	13	4	5	1	8	0	1	0	0
	100.0	30.8	38.5	7.7	61.5	0.0	7.7	0.0	0.0
	12	0	8	2	10	1	0	1	0
	100.0	0.0	66.7	16.7	83.3	8.3	0.0	8.3	0.0

800  
425  
476

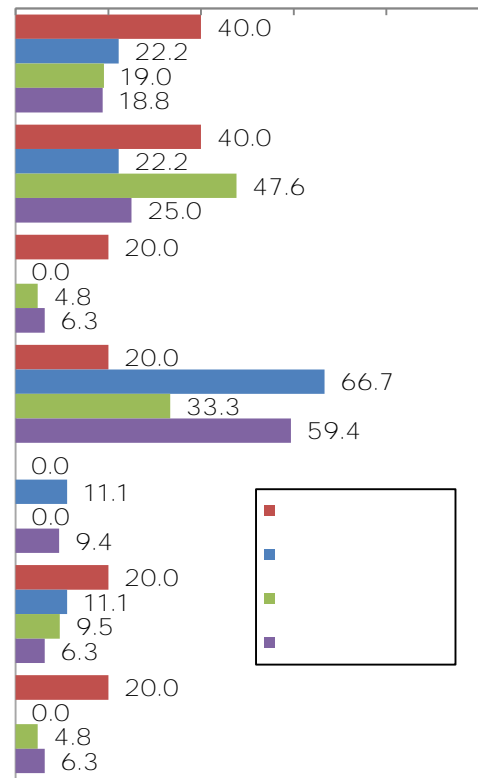
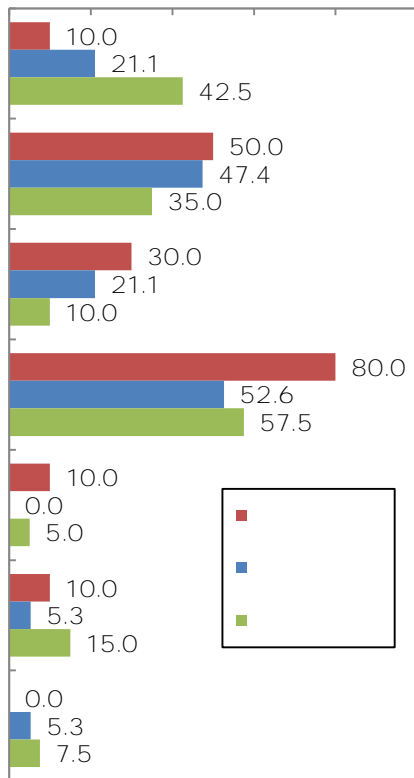
(業種別)

[製造業]

[非製造業]

0.0 20.0 40.0 60.0 80.0 100.0

0.0 20.0 40.0 60.0 80.0 100.0 ( )

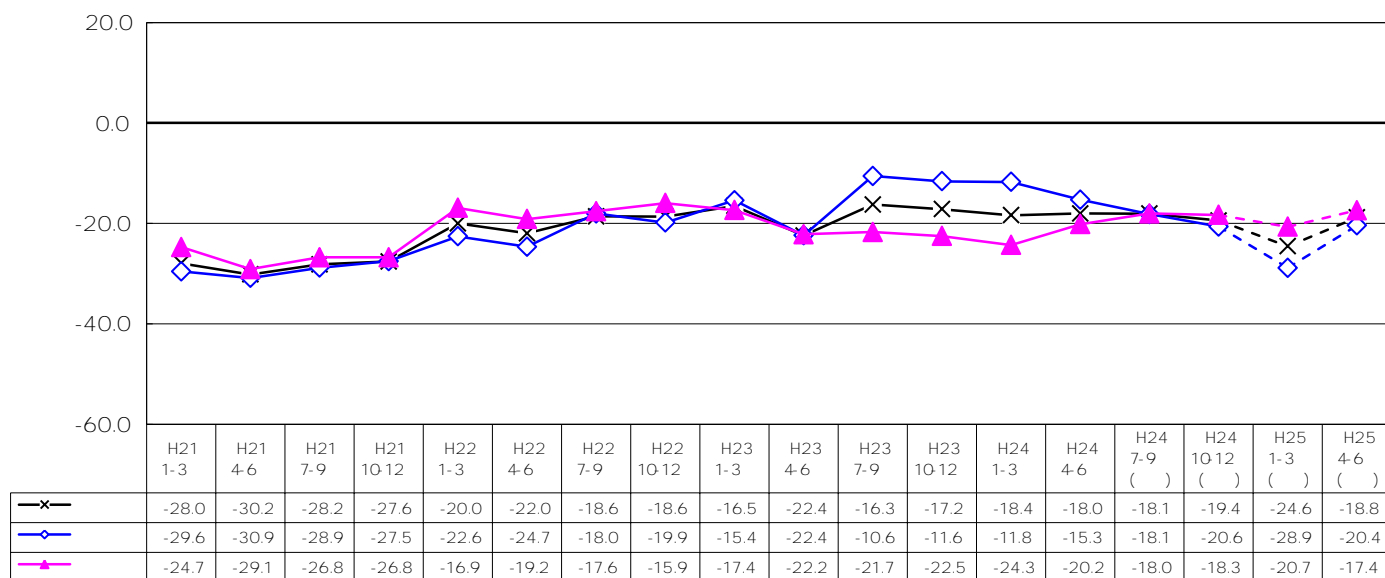


	20	2	10	6	16	2	2	0	0	0
	100.0	10.0	50.0	30.0	80.0	10.0	10.0	0.0	0.0	0.0
	19	4	9	4	10	0	1	1	0	0
	100.0	21.1	47.4	21.1	52.6	0.0	5.3	5.3	0.0	0.0
	40	17	14	4	23	2	6	3	0	0
	100.0	42.5	35.0	10.0	57.5	5.0	15.0	7.5	0.0	0.0
	5	2	2	1	1	0	1	1	0	0
	100.0	40.0	40.0	20.0	20.0	0.0	20.0	20.0	0.0	0.0
	9	2	2	0	6	1	1	0	0	0
	100.0	22.2	22.2	0.0	66.7	11.1	11.1	0.0	0.0	0.0
	21	4	10	1	7	0	2	1	0	0
	100.0	19.0	47.6	4.8	33.3	0.0	9.5	4.8	0.0	0.0
	32	6	8	2	19	3	2	2	0	0
	100.0	18.8	25.0	6.3	59.4	9.4	6.3	6.3	0.0	0.0

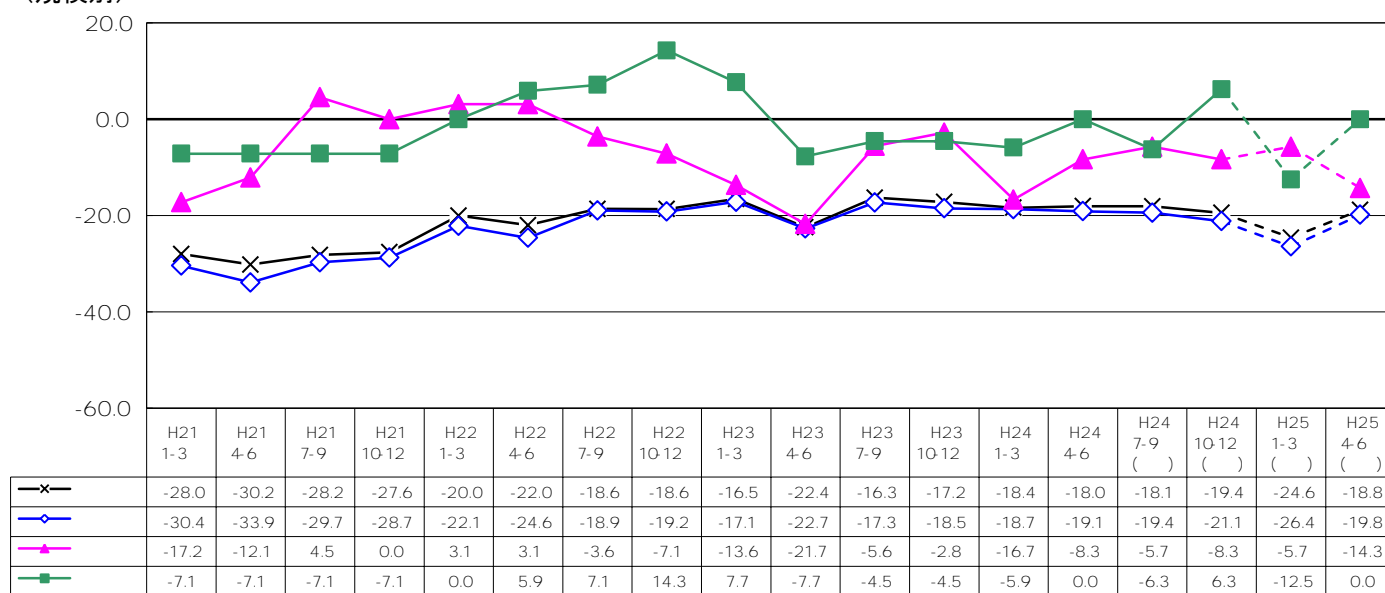
( 1 0 )

23 7 9 1 3 1 3  
 4 6 4 6  
 7 9 1 3 4 6  
 1 3 4 6  
 10 12 1 3

(製造・非製造業別)



(規模別)



( % )

7 9

10 12

1 3

7 9 20

10 12

7 9 10 12

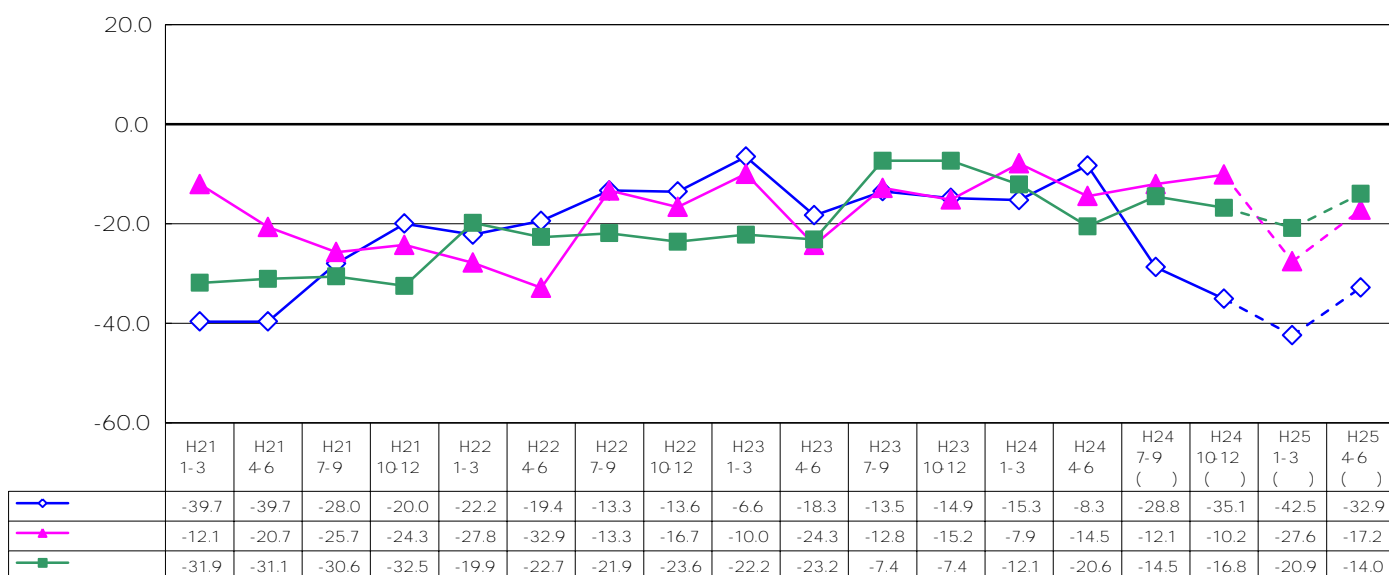
7 9

1 3

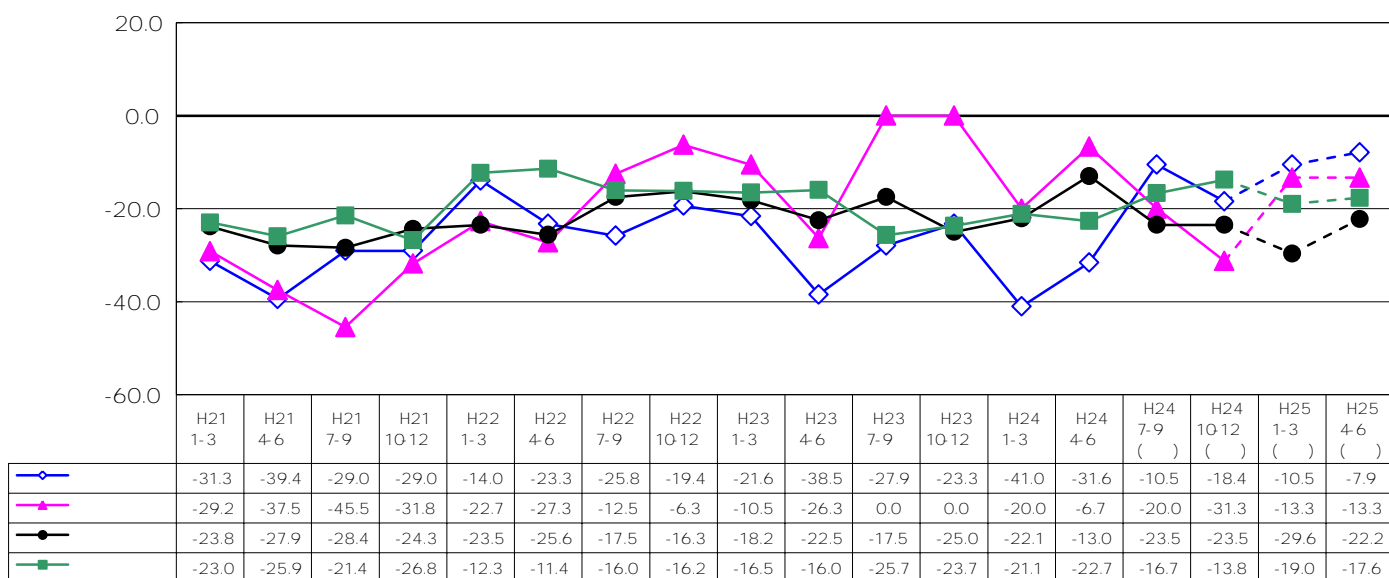
1 3

(業種別)

[製造業]

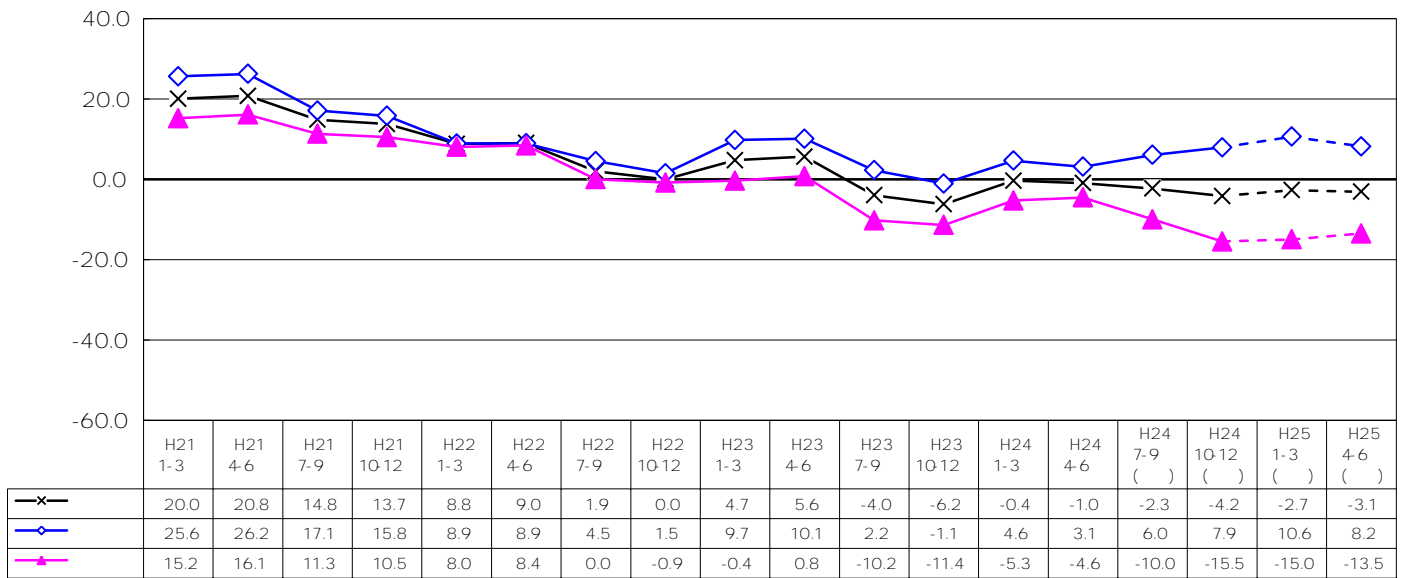


[非製造業]

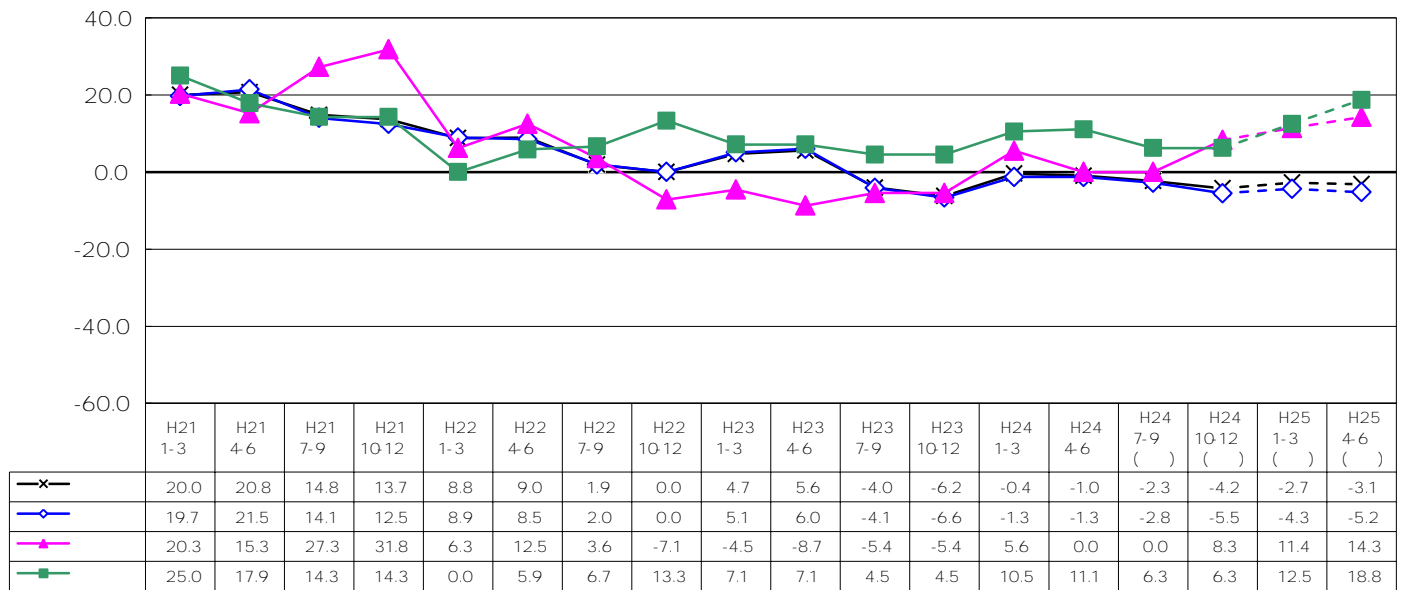


( % )

(製造・非製造業別)



(規模別)



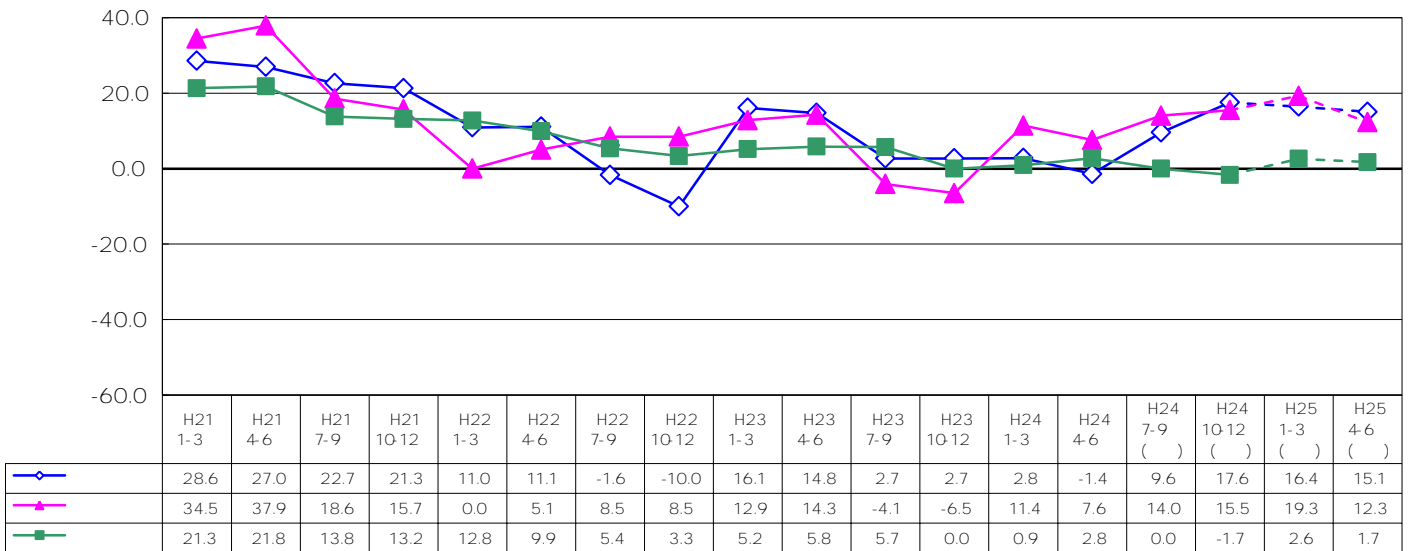
( % )

24 4 6

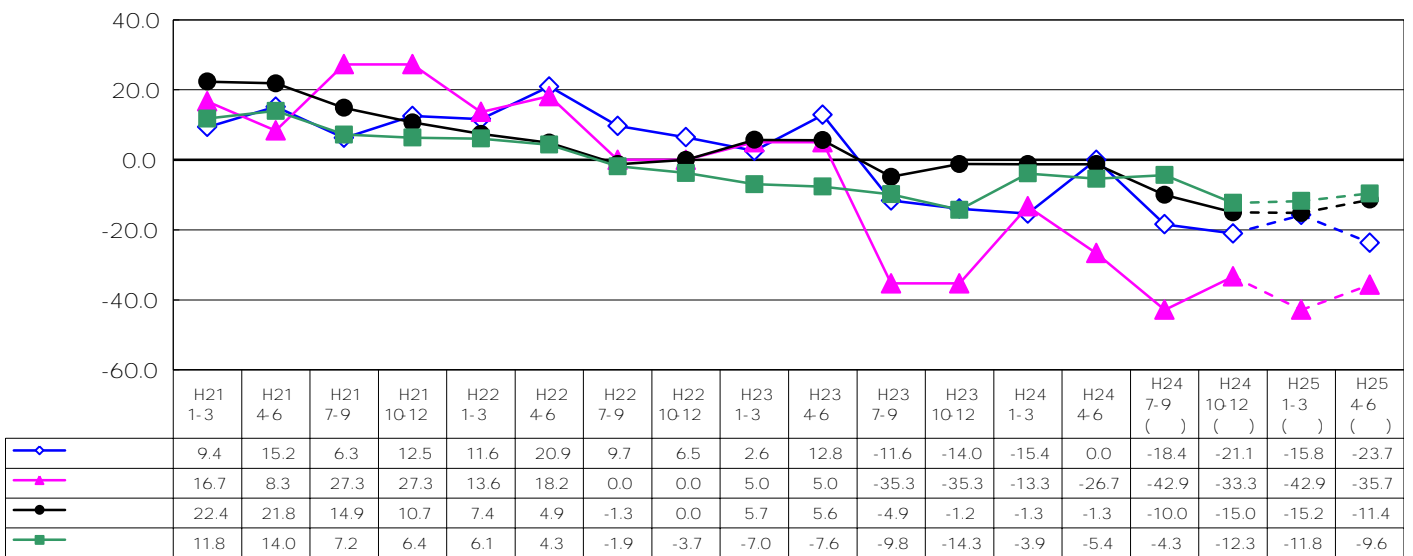
7 9

7 9

(業種別)  
[製造業]



[非製造業]

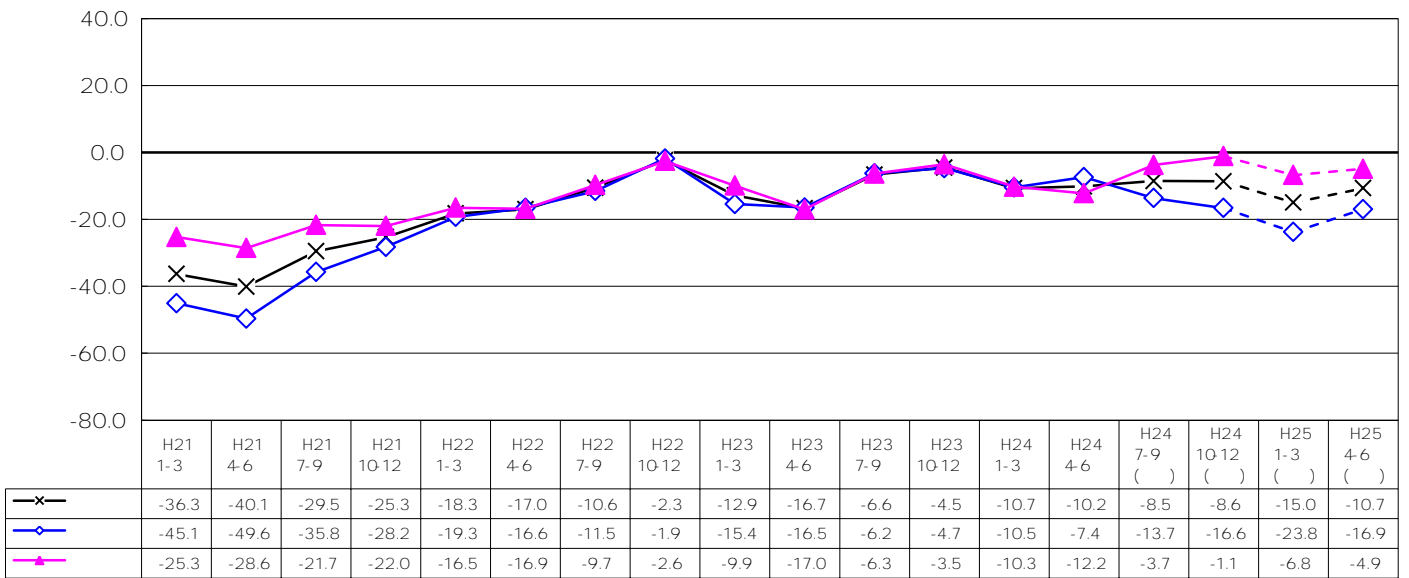


( % )

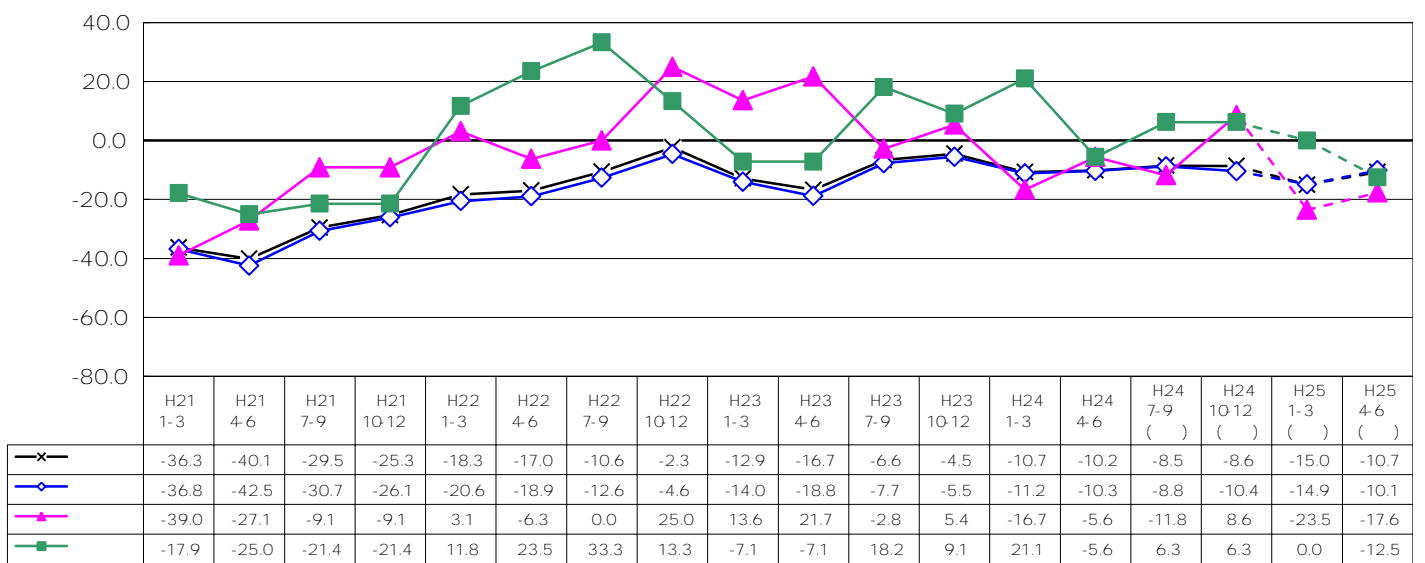
( 1 2 )

4 6  
 7 9                  10 12  
 7 9                                  4 6  
 10 12                  20                                  1 3

(製造・非製造業別)



(規模別)

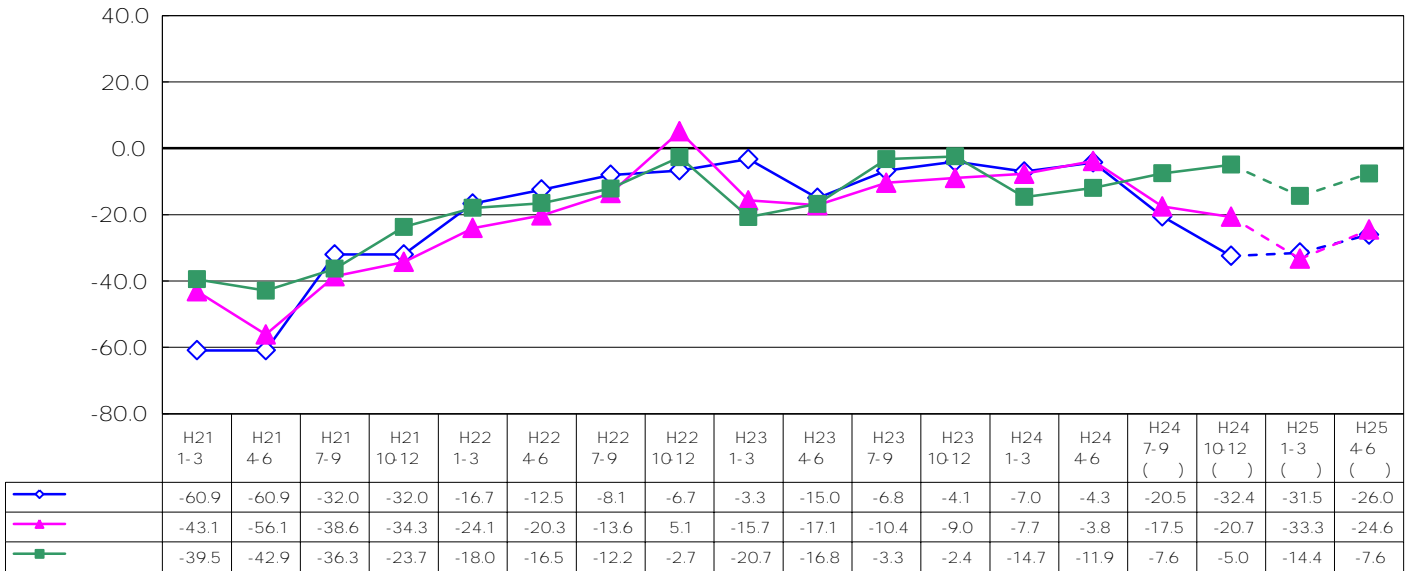


( % )

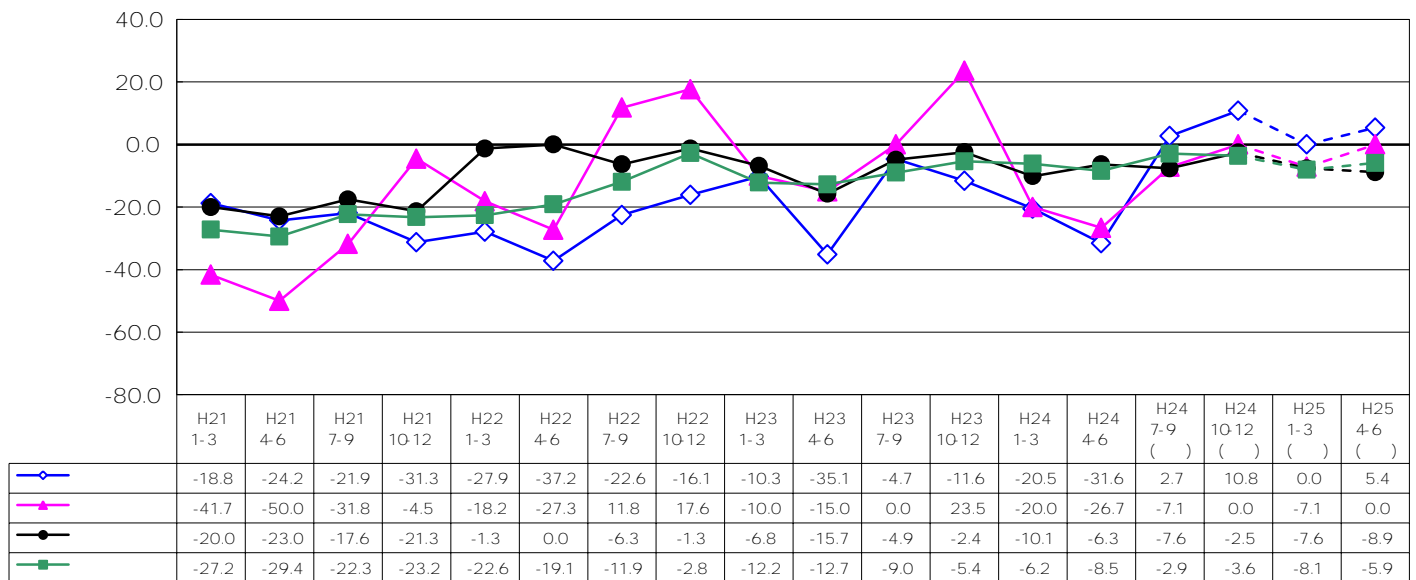


7 9                      10 12  
 7 9                      10 12                      1 3  
 7 9                      30                      10 12  
 7 9                      10 12

(業種別)  
 [製造業]



[非製造業]



( % )

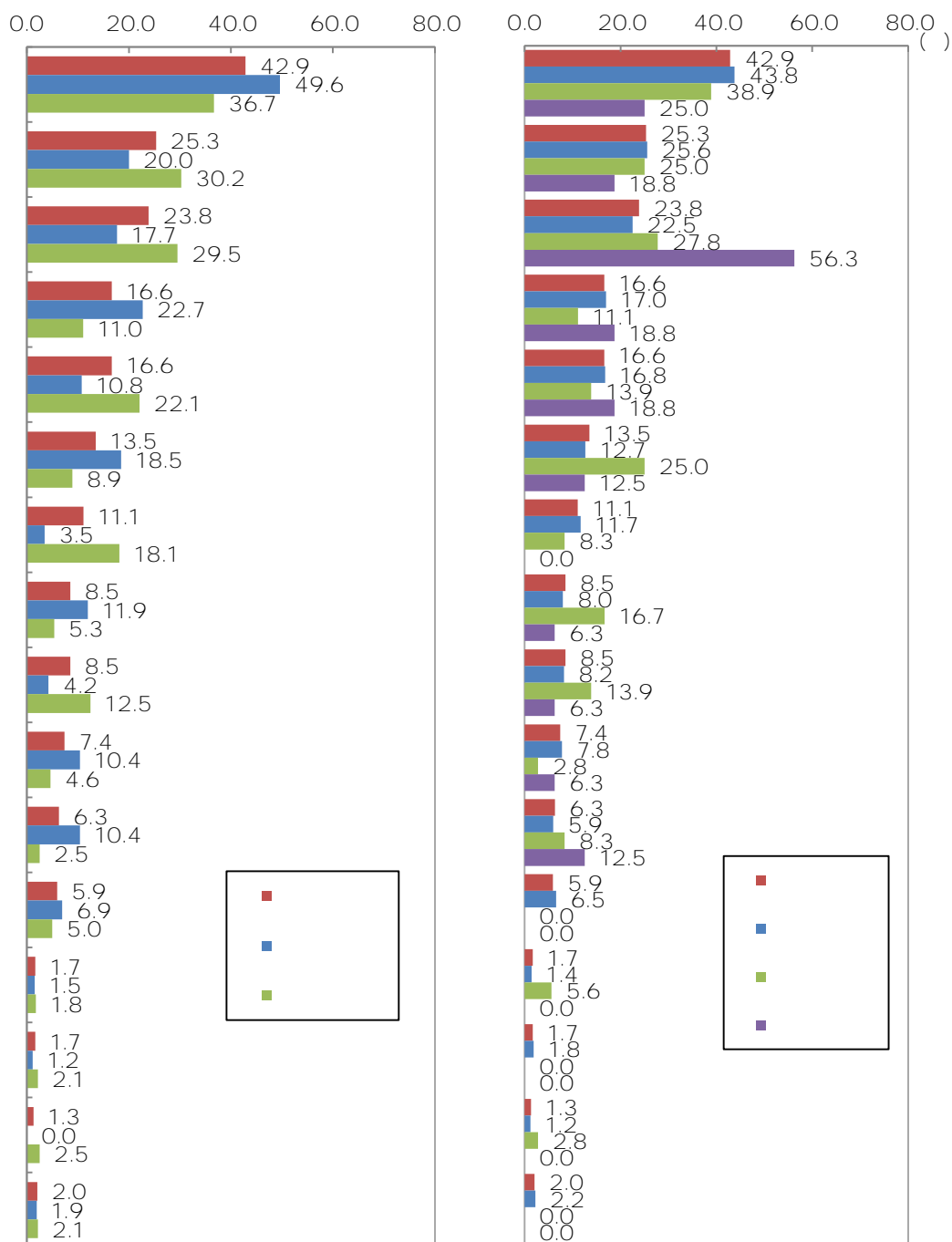
# ■事業計画について

( 1 )



(製造・非製造業別)

(規模別)



	541	232	137	129	90	90	73	60	46	46	40	34	32	9	9	7	11	9	
	100.0	42.9	25.3	23.8	16.6	16.6	13.5	11.1	8.5	8.5	7.4	6.3	5.9	1.7	1.7	1.3	2.0	1.7	
	260	129	52	46	59	28	48	9	31	11	27	27	18	4	3	0	5	5	
	100.0	49.6	20.0	17.7	22.7	10.8	18.5	3.5	11.9	4.2	10.4	10.4	6.9	1.5	1.2	0.0	1.9	1.9	
	287	103	85	83	31	62	25	51	15	35	13	7	14	5	6	7	6	4	
	100.0	36.7	30.2	29.5	11.0	22.1	8.9	18.1	5.3	12.5	4.6	2.5	5.0	1.8	2.1	2.5	2.1	1.4	
	489	214	125	110	83	82	62	57	39	40	38	29	32	7	9	6	11	9	
	100.0	43.8	25.6	22.5	17.0	16.8	12.7	11.7	8.0	8.2	7.8	5.9	6.5	1.4	1.8	1.2	2.2	1.8	
	36	14	9	10	4	5	9	3	6	5	1	3	0	2	0	1	0	0	
	100.0	38.9	25.0	27.8	11.1	13.9	25.0	8.3	16.7	13.9	2.8	8.3	0.0	5.6	0.0	2.8	0.0	0.0	
	16	4	3	9	3	3	2	0	1	1	1	2	0	0	0	0	0	0	
	100.0	25.0	18.8	56.3	18.8	18.8	12.5	0.0	6.3	6.3	6.3	12.5	0.0	0.0	0.0	0.0	0.0	0.0	

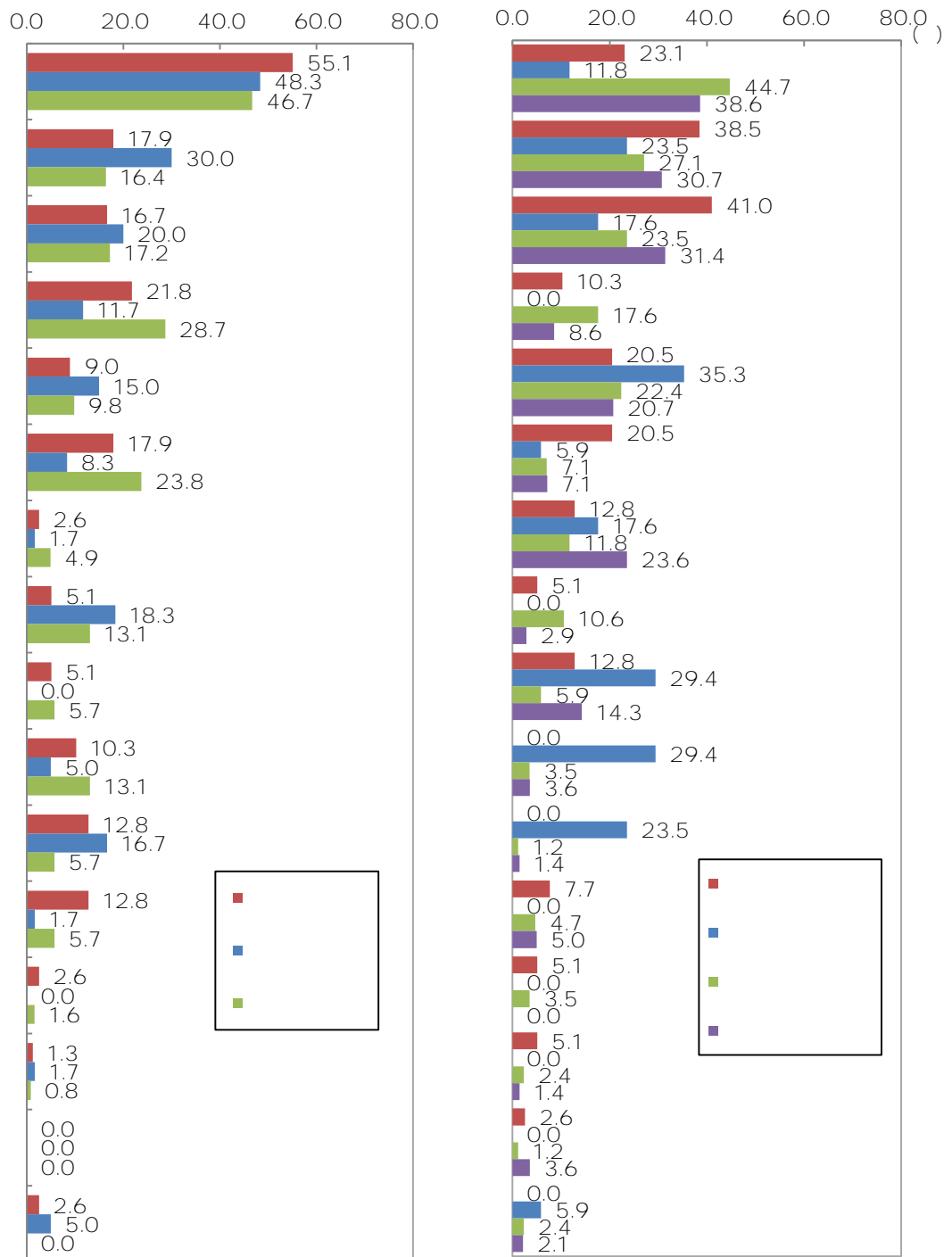
3

551  
300 2  
287 238  
410 385  
353 294  
235  
236

(業種別)

[製造業]

[非製造業]

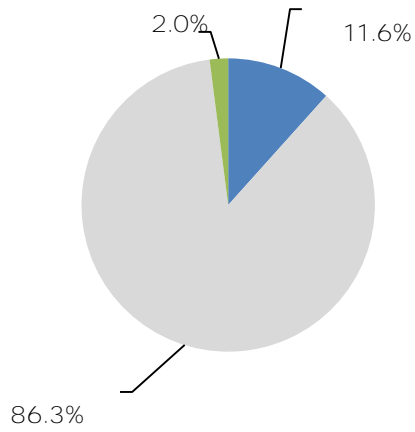


		78	43	14	13	17	7	14	2	4	4	8	10	10	2	1	0	2	1
		100.0	55.1	17.9	16.7	21.8	9.0	17.9	2.6	5.1	5.1	10.3	12.8	12.8	2.6	1.3	0.0	2.6	1.3
		60	29	18	12	7	9	5	1	11	0	3	10	1	0	1	0	3	1
		100.0	48.3	30.0	20.0	11.7	15.0	8.3	1.7	18.3	0.0	5.0	16.7	1.7	0.0	1.7	0.0	5.0	1.7
		122	57	20	21	35	12	29	6	16	7	16	7	7	2	1	0	0	3
		100.0	46.7	16.4	17.2	28.7	9.8	23.8	4.9	13.1	5.7	13.1	5.7	5.7	1.6	0.8	0.0	0.0	2.5
		39	9	15	16	4	8	8	5	2	5	0	0	3	2	2	1	0	0
		100.0	23.1	38.5	41.0	10.3	20.5	20.5	12.8	5.1	12.8	0.0	0.0	7.7	5.1	5.1	2.6	0.0	0.0
		17	2	4	3	0	6	1	3	0	5	5	4	0	0	0	0	1	0
		100.0	11.8	23.5	17.6	0.0	35.3	5.9	17.6	0.0	29.4	29.4	23.5	0.0	0.0	0.0	0.0	5.9	0.0
		85	38	23	20	15	19	6	10	9	5	3	1	4	3	2	1	2	2
		100.0	44.7	27.1	23.5	17.6	22.4	7.1	11.8	10.6	5.9	3.5	1.2	4.7	3.5	2.4	1.2	2.4	2.4
		140	54	43	44	12	29	10	33	4	20	5	2	7	0	2	5	3	2
		100.0	38.6	30.7	31.4	8.6	20.7	7.1	23.6	2.9	14.3	3.6	1.4	5.0	0.0	1.4	3.6	2.1	1.4

( 2 )  
( 2 - 1 )

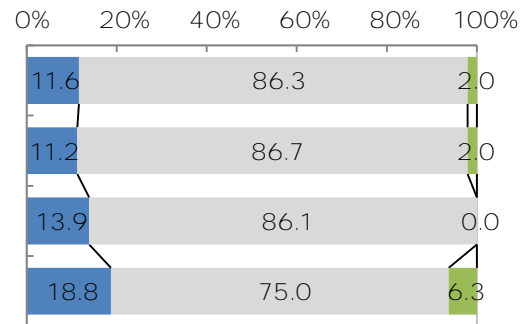
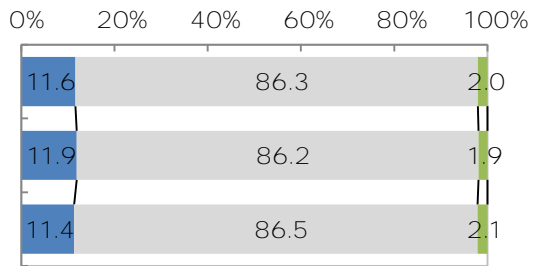
2 188

1 11.6



(製造・非製造業別)

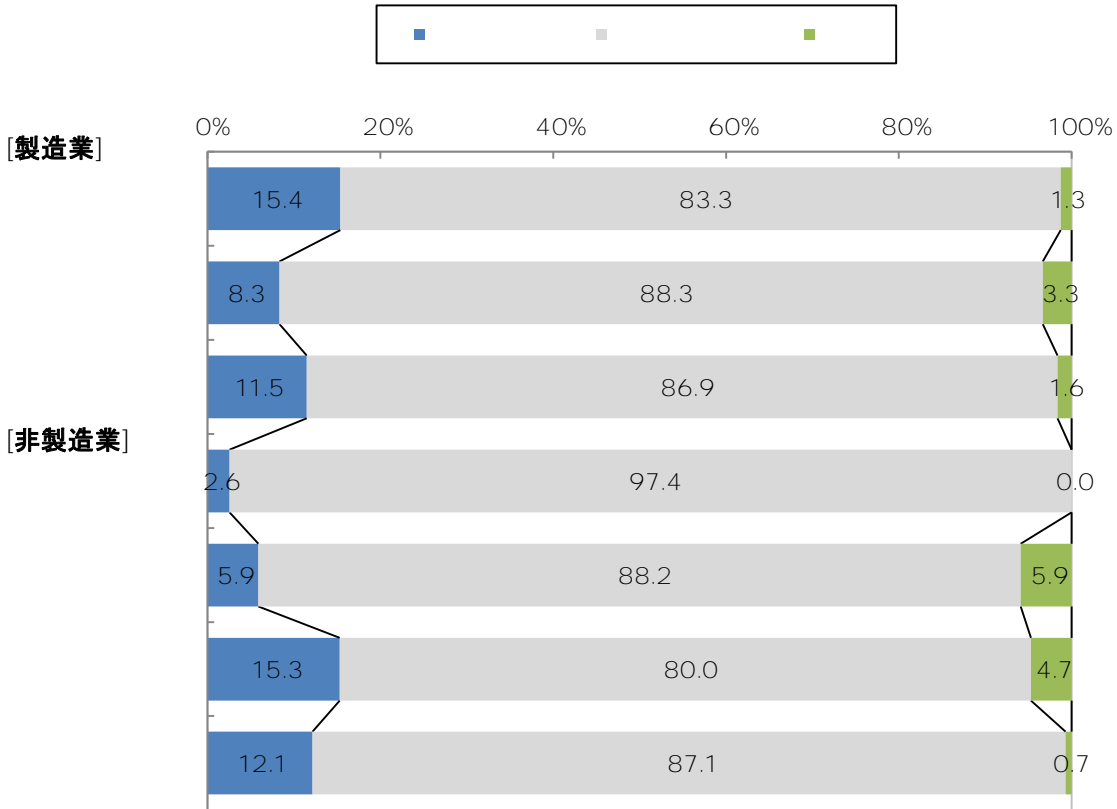
(規模別)



( )

	541	63	467	11
	100.0	11.6	86.3	2.0
	260	31	224	5
	100.0	11.9	86.2	1.9
	281	32	243	6
	100.0	11.4	86.5	2.1
	489	55	424	10
	100.0	11.2	86.7	2.0
	36	5	31	0
	100.0	13.9	86.1	0.0
	16	3	12	1
	100.0	18.8	75.0	6.3

(業種別)



( )

	78	12	65	1
	100.0	15.4	83.3	1.3
	60	5	53	2
	100.0	8.3	88.3	3.3
	122	14	106	2
	100.0	11.5	86.9	1.6
	39	1	38	0
	100.0	2.6	97.4	0.0
	17	1	15	1
	100.0	5.9	88.2	5.9
	85	13	68	4
	100.0	15.3	80.0	4.7
	140	17	122	1
	100.0	12.1	87.1	0.7

( 2 - 2 )

63

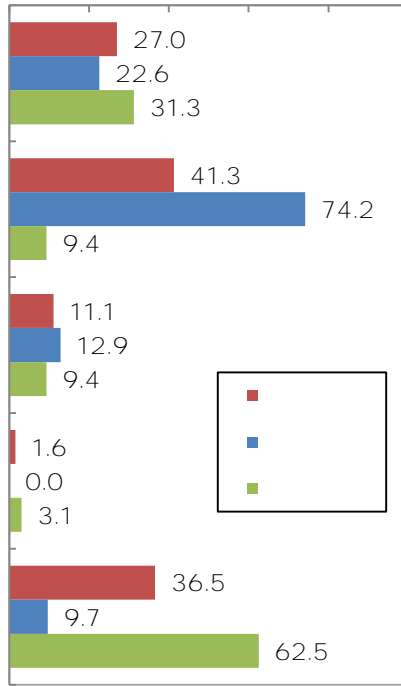
413  
742  
625

365

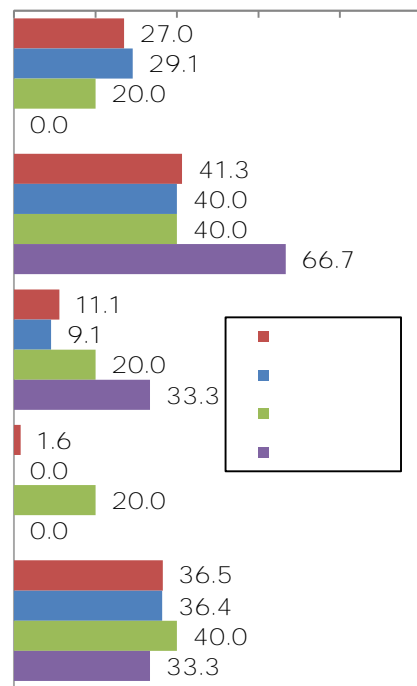
(製造・非製造業別)

(規模別)

0.0 20.0 40.0 60.0 80.0 100.0



0.0 20.0 40.0 60.0 80.0 100.0 ( )



( )

	63	17	26	7	1	23	0
	100.0	27.0	41.3	11.1	1.6	36.5	0.0
	31	7	23	4	0	3	0
	100.0	22.6	74.2	12.9	0.0	9.7	0.0
	32	10	3	3	1	20	0
	100.0	31.3	9.4	9.4	3.1	62.5	0.0
	55	16	22	5	0	20	0
	100.0	29.1	40.0	9.1	0.0	36.4	0.0
	5	1	2	1	1	2	0
	100.0	20.0	40.0	20.0	20.0	40.0	0.0
	3	0	2	1	0	1	0
	100.0	0.0	66.7	33.3	0.0	33.3	0.0

3



12

12

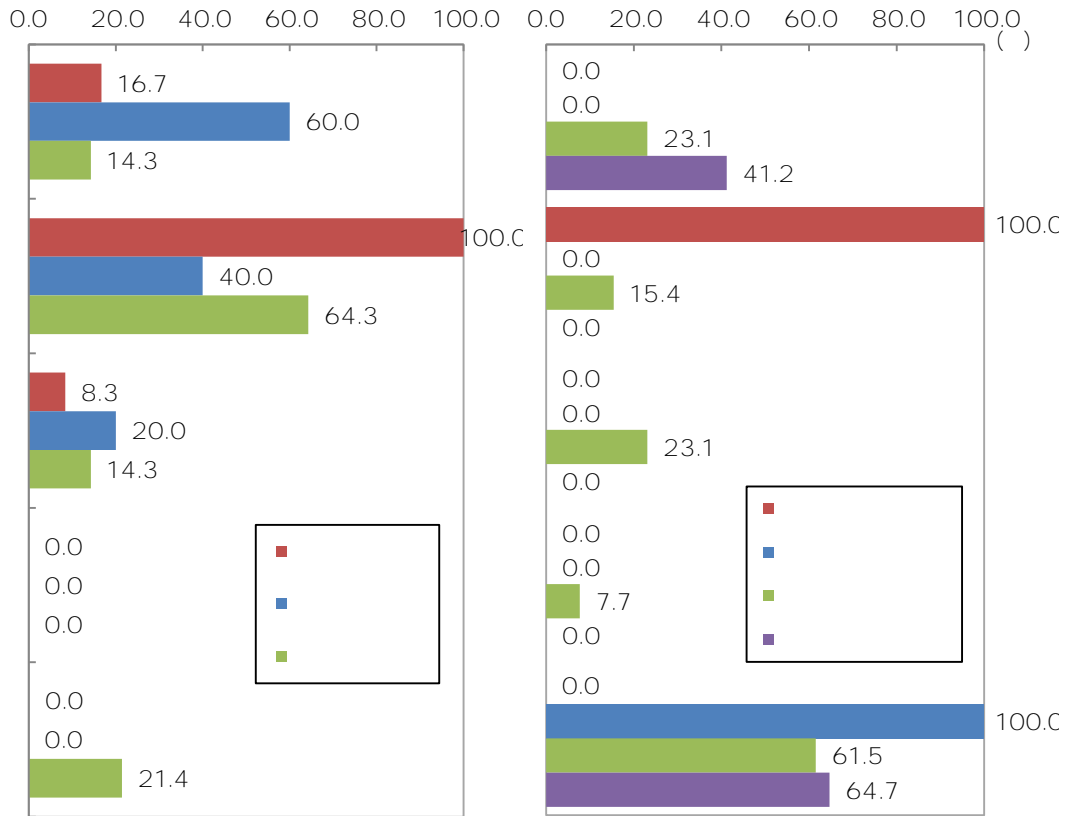
1000

6

(業種別)

[製造業]

[非製造業]



( )

	12	2	12	1	0	0	0	0
	100.0	16.7	100.0	8.3	0.0	0.0	0.0	0.0
	5	3	2	1	0	0	0	0
	100.0	60.0	40.0	20.0	0.0	0.0	0.0	0.0
	14	2	9	2	0	3	0	0
	100.0	14.3	64.3	14.3	0.0	21.4	0.0	0.0
	1	0	1	0	0	0	0	0
	100.0	0.0	100.0	0.0	0.0	0.0	0.0	0.0
	1	0	0	0	0	1	0	0
	100.0	0.0	0.0	0.0	0.0	100.0	0.0	0.0
	13	3	2	3	1	8	0	0
	100.0	23.1	15.4	23.1	7.7	61.5	0.0	0.0
	17	7	0	0	0	11	0	0
	100.0	41.2	0.0	0.0	0.0	64.7	0.0	0.0

3

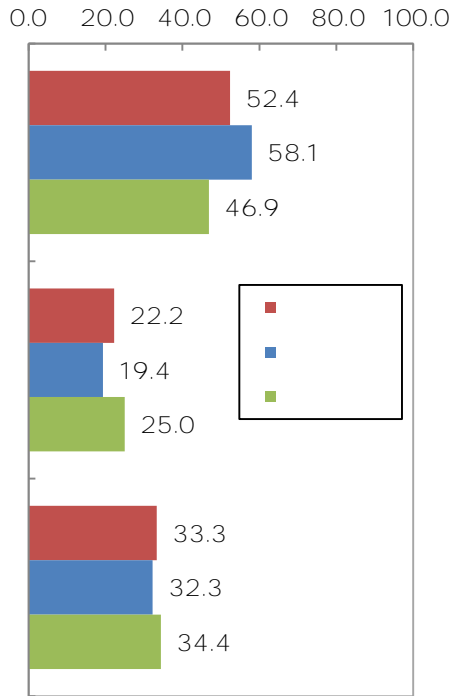
( 2 - 3 )

(63 )  
222

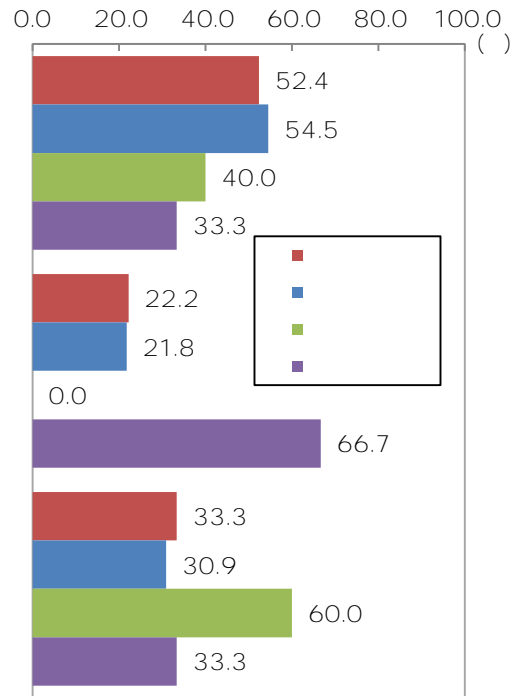
524

333

(製造・非製造業別)



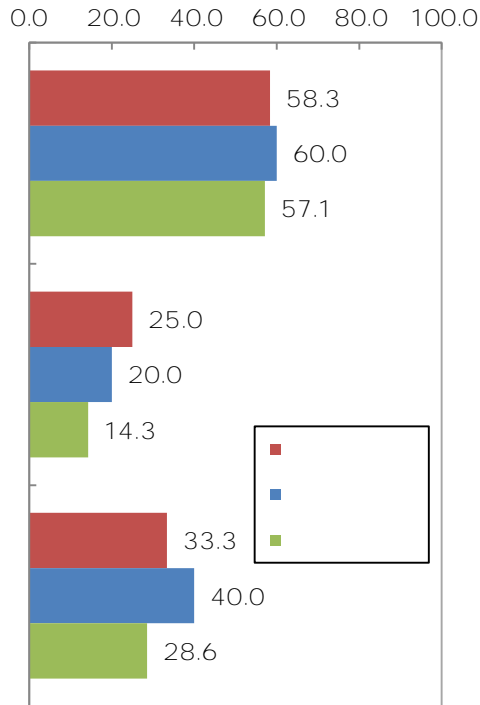
(規模別)



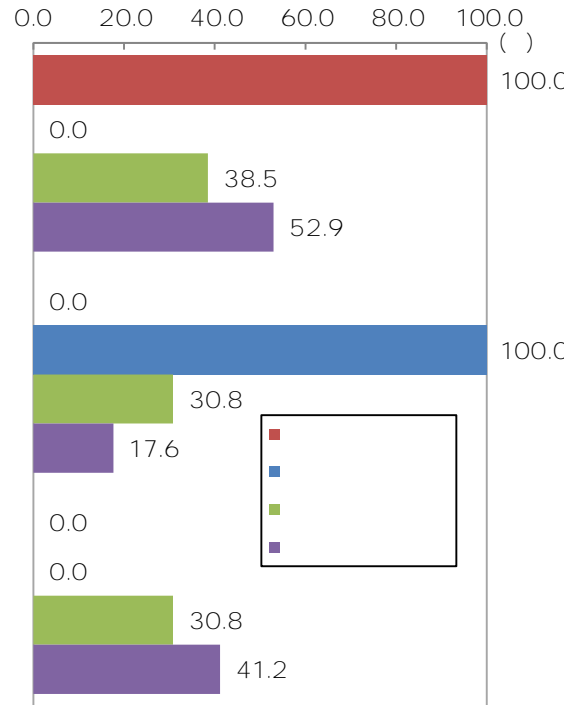
( )

	63	33	14	21	2
	100.0	52.4	22.2	33.3	3.2
	31	18	6	10	0
	100.0	58.1	19.4	32.3	0.0
	32	15	8	11	2
	100.0	46.9	25.0	34.4	6.3
	55	30	12	17	2
	100.0	54.5	21.8	30.9	3.6
	5	2	0	3	0
	100.0	40.0	0.0	60.0	0.0
	3	1	2	1	0
	100.0	33.3	66.7	33.3	0.0

(業種別)  
[製造業]



[非製造業]



		( )				
	12	7	3	4	0	
	100.0	58.3	25.0	33.3	0.0	
	5	3	1	2	0	
	100.0	60.0	20.0	40.0	0.0	
	14	8	2	4	0	
	100.0	57.1	14.3	28.6	0.0	
	1	1	0	0	0	
	100.0	100.0	0.0	0.0	0.0	
	1	0	1	0	0	
	100.0	0.0	100.0	0.0	0.0	
	13	5	4	4	0	
	100.0	38.5	30.8	30.8	0.0	
	17	9	3	7	2	
	100.0	52.9	17.6	41.2	11.8	